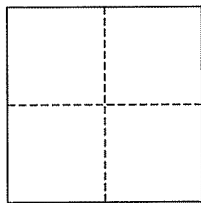


**CORNER RECORD**

Document Number AP# 011-275-13  
City of San Rafael County of Marin, California

Brief Legal Description As per Deed # 2007-061796 & 18 PM 41



**CORNER TYPE**

Government Corner  Control   
Meander  Property   
Rancho  Other   
Date of Survey January 10, 2008

**COORDINATES (Optional)**

N. \_\_\_\_\_  
E. \_\_\_\_\_  
Zone                      NAD27  NAD83   
NAD83 Epoch \_\_\_\_\_  
Elev. \_\_\_\_\_  
Vert. Datum: NGVD29  NAVD88   
Meas. Units: Metric  Imperial

**Corner-** Left as found  Found and tagged  Established  Reestablished  Rebuilt

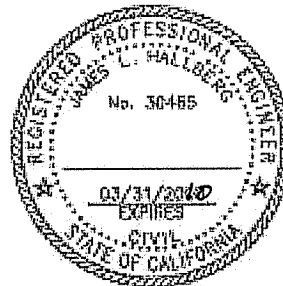
Identification and type of corner found: Evidence used to identify or procedure used to establish or reestablish the corner:  
Found Iron Pipes per 18 PM 41 coincident with corners per DN 2007-061796.

A description of the physical condition of the monument as found and as set or reset: Set Iron Pipe & Plug (RCE 30465) and Chiseled Cross-cuts as shown and noted.

**SURVEYOR'S STATEMENT**

This corner Record was prepared by me or under my direction in conformance with the Land Surveyor's Act on March 31, 2008

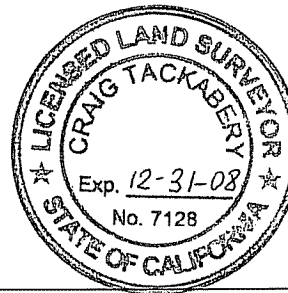
Signed [Signature] P.L.S. or R.C.E. No. 30465



**COUNTY SURVEYOR'S STATEMENT**

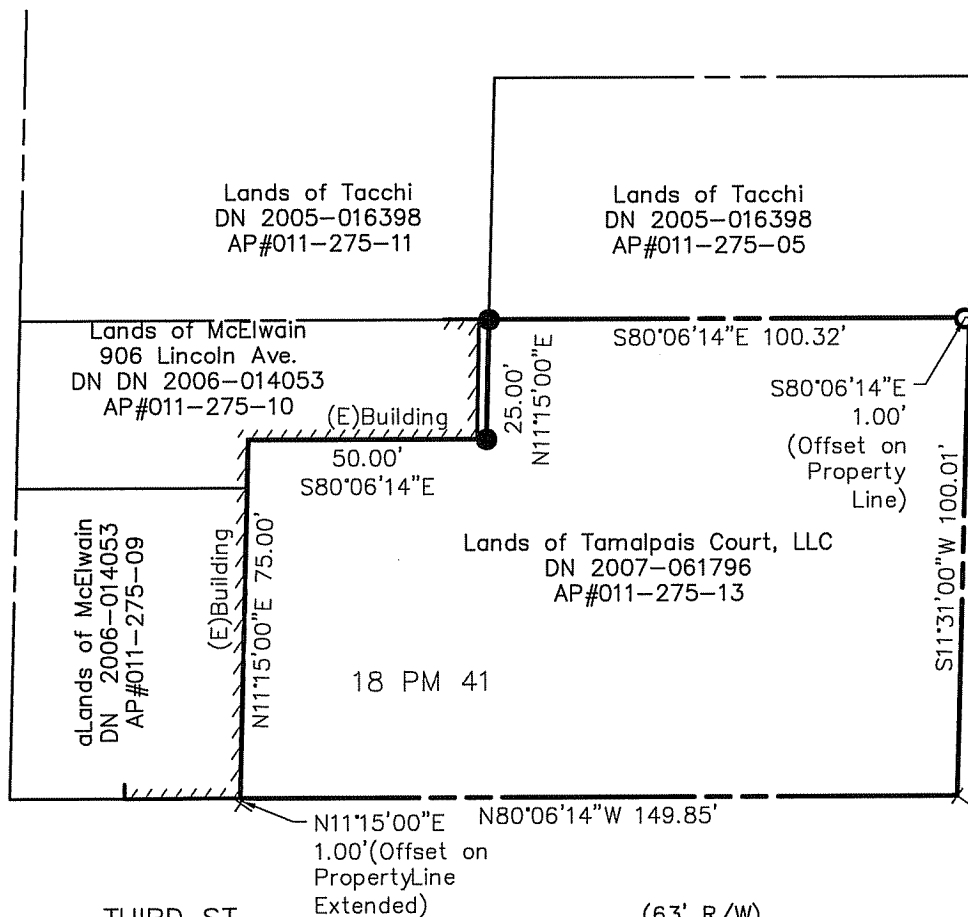
This Corner Record was received APRIL 4, 2008 and examined and filed APRIL 24, 2008

Signed [Signature] P.L.S. or R.C.E. No. 7128  
Title COUNTY SURVEYOR



**County Surveyor's Comment** \_\_\_\_\_

LINCOLN AVE. (66' R/W)  
(formerly Petaluma Ave.)



BASIS OF BEARING N 11°35'17" E (MEAN CURB BEARING)

TAMALPIAS AVE  
(40' R/W)

THIRD ST. (63' R/W)



SCALE: 1" = 40'

**LEGEND**

- FOUND IP PER 18 PM 41
- SET IP & PLUG, RCE 30465
- × SET CROSS-CUT
- (t) DENOTES TOTAL

Note: All distances are in feet and decimals thereof.

SHEET	1	OF	1
SCALE:	1" = 40'	DESIGN:	FA
DATE:	Mar. 2008	DRAWN:	FA
FILE:	2005-056	CHECKED:	J.L.H.

**J.L. ENGINEERING**  
CIVIL ENGINEERS-LAND SURVEYORS  
1539 4th ST., SAN RAFAEL, CA. 94901 (415) 457-6647

**Corner Record**  
Lands of Burke - 706 Third St., San Rafael  
APN 011-275-13, San Rafael, Marin County, CA