

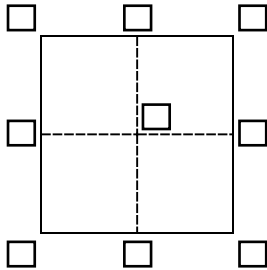
CORNER RECORD

Agency Index CR24-008

Document Number 011-265-01 (ADJ)(c)(d)

City of SAN RAFAEL County of MARIN, California

Brief Legal Description MONUMENT LOCATED WITHIN THIRD STREET AT BROOKS ST



CORNER TYPE

- Government Corner Control
- Meander Property
- Rancho Other

Date of Survey January, 2024

COORDINATES (Optional)

N. _____ E. _____

Elevation _____

Units Metric U.S. Survey Foot

Horizontal Datum _____

Zone _____ Epoch Date _____

Vertical Datum _____

Complies with Public Resources Code §§8801-8819

Complies with Public Resources Code §§8890-8902

PLS Act Ref.: 8765(d) 8771 8773 Other:

Corner/
Monument: Left as found Established Rebuilt Pre-Construction

Found and tagged Reestablished Referenced Post-Construction

Narrative of corner identified and monument as found, set, reset, replaced, or removed:

See sheet #2 for description(s):

NAILS AND TAGS AS SHOWN ON PRE-CON CORNER RECORD WERE DESTROYED DURING CONSTRUCTION. SET NAILS AND TAGS, IN SIDEWALK, MARKED PLS 9387 TO PRESERVE PREVIOUS MONUMENT LOCATIONS.

REFERENCE POINTS IN CURB AS SHOWN ON PAGE 2 TO PRESERVE MONUMENT LOCATION.

SURVEYOR'S STATEMENT

This Corner Record was prepared by me or under my direction in conformance with

the Professional Land Surveyors' Act on January 30, 2024.

Signed [Signature] P.L.S. or R.C.E. No. 9387



COUNTY SURVEYOR'S STATEMENT

This Corner Record was received January 31, 2024

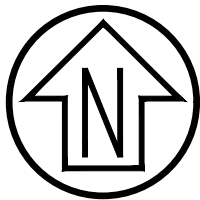
and examined and filed February 05, 2024.

Signed T.W. Park P.L.S. [Redacted] No. 8176

Title County Surveyor

County Surveyor's Comment



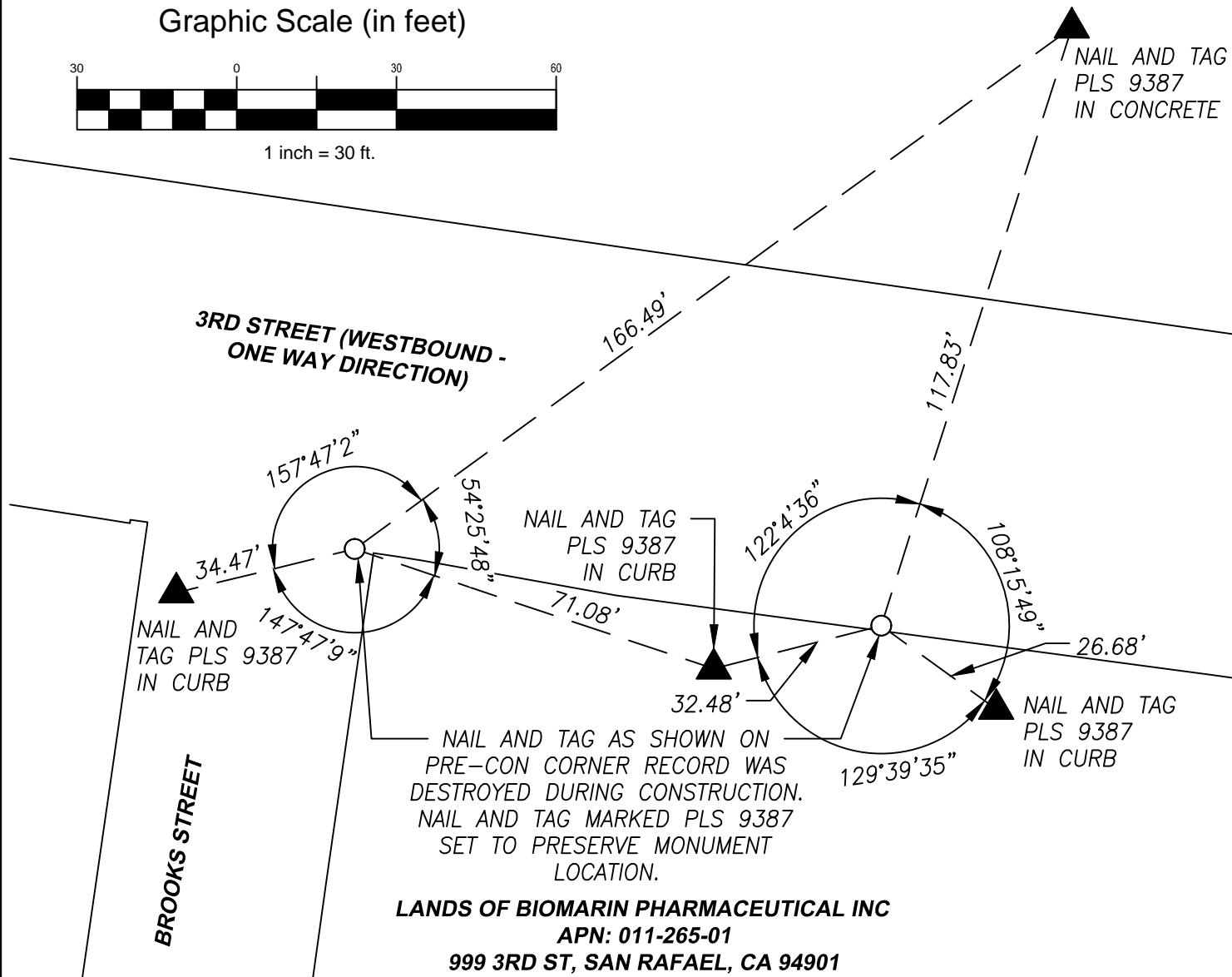


LANDS OF PAULS TRUST AND GOLDSTONE
 APN: 011-263-16
 924 3RD ST, SAN RAFAEL, CA 94901

Graphic Scale (in feet)



1 inch = 30 ft.



LANDS OF BIOMARIN PHARMACEUTICAL INC
 APN: 011-265-01
 999 3RD ST, SAN RAFAEL, CA 94901

LEGEND

- TIE TO PRE-CONSTRUCTION REFERENCE POINT
- ▲ REFERENCE POINT, NAIL AND TAG PLS 9387
- SET MONUMENT AS NOTED

CSW | ST2

CSW/Stuber-Stroch Engineering Group, Inc.
 Civil & Structural Engineers | Surveying & Mapping | Environmental Planning
 Land Planning | Construction Management
 45 Leveroni Court | tel: 415.883.9850
 Novato, CA 94949 | fax: 415.883.9835
<http://www.cswst2.com>

Rev. -
 Job No. 1920101.51

Date: 01/26/24
 Scale: 1" = 30'

**MONUMENT PRESERVATION
 CORNER RECORD**

MONUMENT LOCATED WITHIN 3RD STREET AT BROOKS STREET
 SAN RAFAEL MARIN CALIFORNIA