

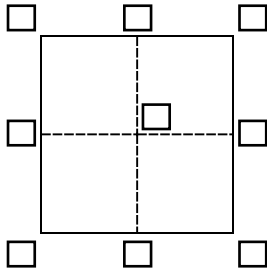
CORNER RECORD

Agency Index CR24-007

Document Number 011-265-01 (ADJ) (b)(c)

City of SAN RAFAEL County of MARIN, California

Brief Legal Description MONUMENT LOCATED WITHIN THIRD STREET AT 999 THIRD STREET



CORNER TYPE

- Government Corner Control
- Meander Property
- Rancho Other

Date of Survey January, 2024

COORDINATES (Optional)

N. _____ E. _____

Elevation _____

Units Metric U.S. Survey Foot

Horizontal Datum _____

Zone _____ Epoch Date _____

Vertical Datum _____

Complies with Public Resources Code §§8801-8819

Complies with Public Resources Code §§8890-8902

PLS Act Ref.: 8765(d) 8771 8773 Other:

Corner/
Monument: Left as found Established Rebuilt Pre-Construction

Found and tagged Reestablished Referenced Post-Construction

Narrative of corner identified and monument as found, set, reset, replaced, or removed:

See sheet #2 for description(s):

ORIGINAL POINT SHOWN ON PRE-CON CORNER RECORD WAS DESTROYED DURING CONSTRUCTION. NEW LIGHT POLE FOUND WHERE MONUMENT WAS. USE REFERENCE POINTS SHOWN HEREON TO PERPETUATE MONUMENT LOCATION. REFERENCE POINTS IN CURB AS SHOWN ON PAGE 2 TO PRESERVE MONUMENT LOCATION.

SURVEYOR'S STATEMENT

This Corner Record was prepared by me or under my direction in conformance with

the Professional Land Surveyors' Act on January 30, 2024.

Signed [Signature] P.L.S. or R.C.E. No. 9387



COUNTY SURVEYOR'S STATEMENT

This Corner Record was received January 31, 2024

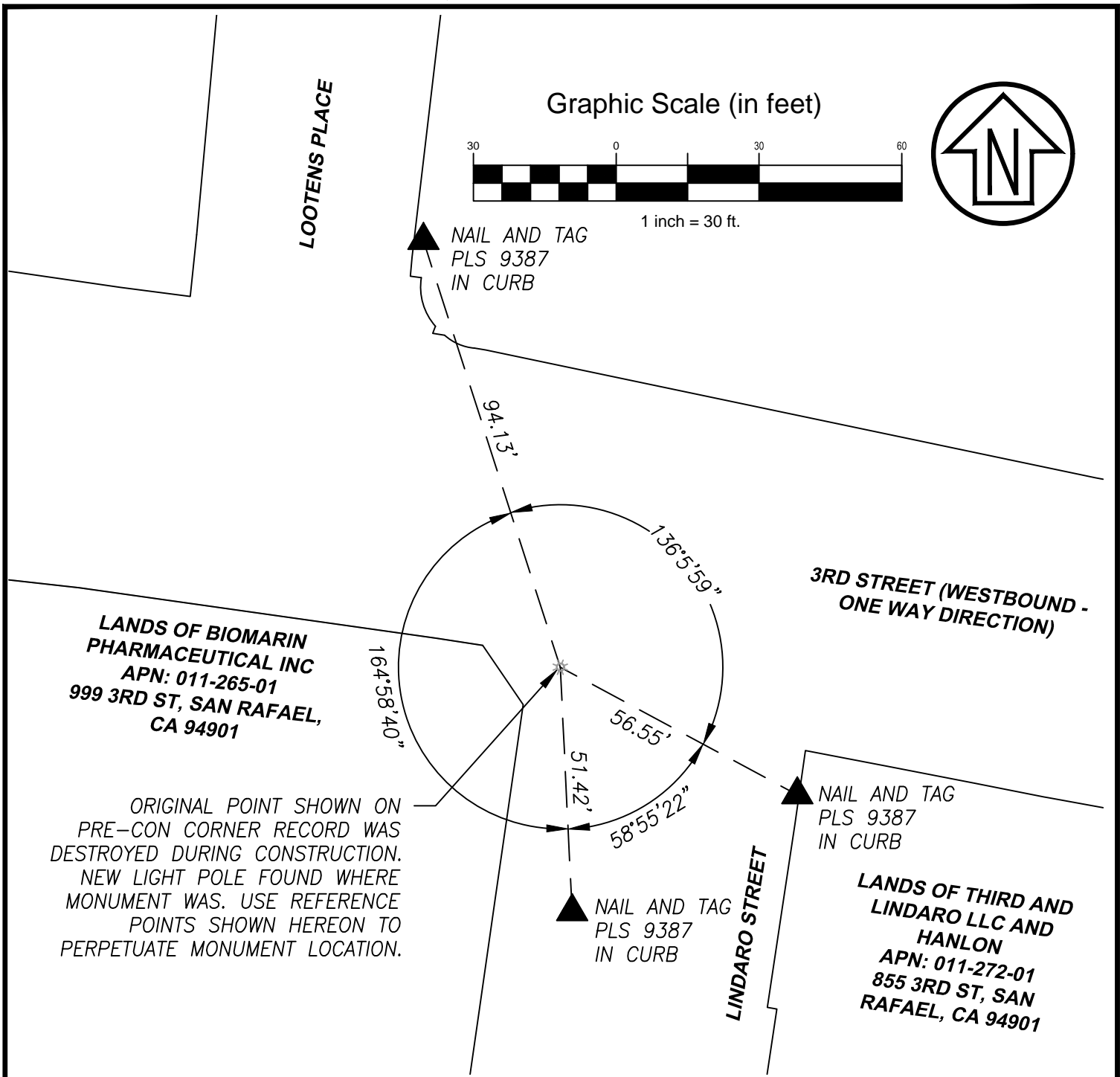
and examined and filed February 05, 2024.

Signed T.W. Park P.L.S. [Redacted] No. 8176

Title County Surveyor

County Surveyor's Comment

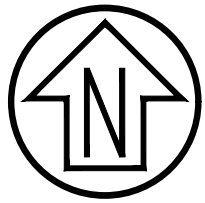




Graphic Scale (in feet)



1 inch = 30 ft.



LOOTENS PLACE

NAIL AND TAG
PLS 9387
IN CURB

94.13'

3RD STREET (WESTBOUND -
ONE WAY DIRECTION)

LANDS OF BIOMARIN
PHARMACEUTICAL INC
APN: 011-265-01
999 3RD ST, SAN RAFAEL,
CA 94901

ORIGINAL POINT SHOWN ON
PRE-CON CORNER RECORD WAS
DESTROYED DURING CONSTRUCTION.
NEW LIGHT POLE FOUND WHERE
MONUMENT WAS. USE REFERENCE
POINTS SHOWN HEREON TO
PERPETUATE MONUMENT LOCATION.

164'58.40"

56.55'

51.42'

NAIL AND TAG
PLS 9387
IN CURB

58°55'22"

NAIL AND TAG
PLS 9387
IN CURB

LINDARO STREET

LANDS OF THIRD AND
LINDARO LLC AND
HANLON
APN: 011-272-01
855 3RD ST, SAN
RAFAEL, CA 94901

LEGEND

- TIE TO PRE-CONSTRUCTION REFERENCE POINT
- ▲ REFERENCE POINT, NAIL AND TAG PLS 9387

CSW | ST2

CSW/Stuber-Stroch Engineering Group, Inc.
Civil & Structural Engineers | Surveying & Mapping | Environmental Planning
Land Planning | Construction Management
45 Leveroni Court
Novato, CA 94949
tel: 415.883.9850
fax: 415.883.9835
<http://www.cswst2.com>

Rev. -
Job No. 1920101.51

Date: 01/26/24
Scale: 1" = 30'

**MONUMENT PRESERVATION
CORNER RECORD**

MONUMENT LOCATED WITHIN 3RD STREET AT 999 3RD STREET
SAN RAFAEL MARIN CALIFORNIA