

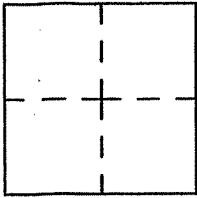
CORNER RECORD

Document number A.P.N. 011-184-10

City of SAN RAFAEL

County of MARIN, California

Brief Legal Description PORTIONS OF LOTS 5 AND 6, IN BLOCK 36,
PER RACK 1, PULL 4, MARIN COUNTY RECORDS & 16 O.S. 42



CORNER TYPE

Government Corner Control
Meander Property
Rancho Other
Date of Survey _____

COORDINATES

N. _____
E. _____
Zone _____ Datum _____
Elev. _____

Corner--- Left as found found and tagged Established Reestablished Rebuilt

Identification and type of corner found: Evidence used to identify or procedure used to establish or reestablish the corner:
UTILIZED STREET MONUMENTS AS SHOWN UPON 16 O.S. 42 AS A BASIS OF
BEARINGS TO MONUMENT PROPERTY CORNERS AS SHOWN UPON ATTACHED
DRAWING.

A description of the physical condition of the monument as found and as set or reset.
MONUMENTS HELD, AS SHOWN UPON 16 O.S. 42, MEASURED PER RECORD

SURVEYOR'S STATEMENT

This Corner Record was prepared by me or under my direction in conformance with
the Land Surveyor's Act on March 22 2006.

Signed Step Flattand L.S. Number 7744

COUNTY SURVEYOR'S STATEMENT

This Corner Record was received MARCH 22, 2006 and examined
and filed APRIL 25, 2006

Signed _____ Title COUNTY SURVEYOR

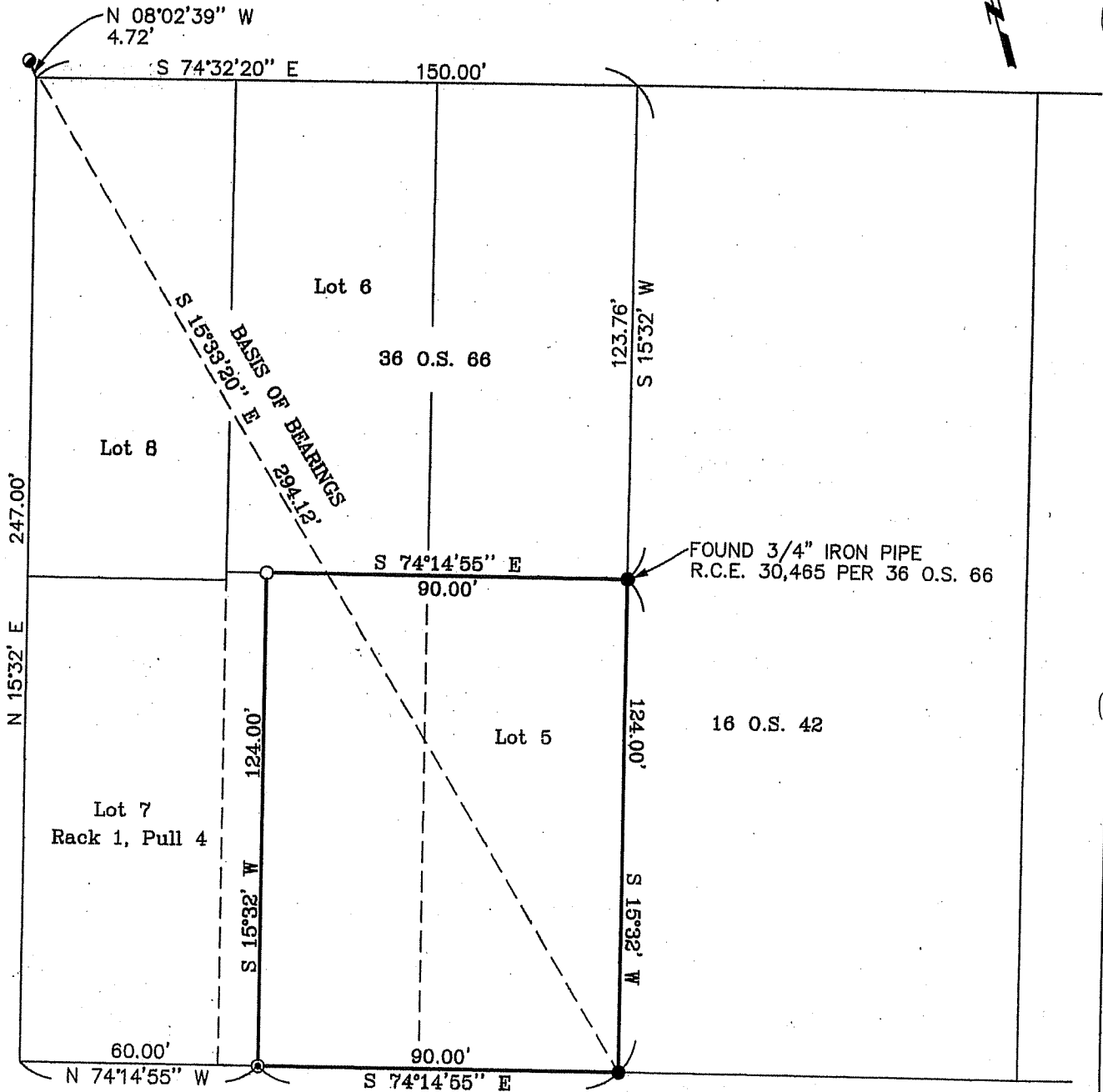
County Surveyor's Comment _____



LAUREL PLACE (50' R/W)



NYE STREET (40' R/W)



MISSION AVENUE (60' R/W)

- Found 3/4" Iron Pipe per 16 O.S. 42 Unless noted otherwise
- Found Concrete Nail per 16 O.S. 42
- ⊙ Set Nail & Brass Tag, L.S. 7744
- Set 1/2" Rebar & Cap, L.S. 7744