

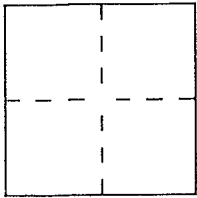
CORNER RECORD

Document Number APN 011-173-31

City of San Rafael

County of Marin, California

Brief Legal Description AP No 011-173-31 (Lot 3, SRM 84)



CORNER TYPE

- Government Corner
- Meander
- Rancho
- Date of Survey _____
- Control
- Property
- Other

COORDINATES
(Optional)

N. _____
 E. _____
 Zone _____ Datum _____
 Elev. _____

Corner — Left as found Found and tagged Established Reestablished Rebuilt

Identification and type of corner found: Evidence used to identify or procedure used to establish or reestablish the corner:
Found IP's per 2004 RS 164

A description of the physical condition of the monument as found and as set or reset:
Set IP's per 2004 RS 164

SURVEYOR'S STATEMENT

This Corner Record was prepared by me or under my direction in conformance with the Land Surveyors' Act on Aug 30, 2004

Signed [Signature] L.S. or R.C.E. Number 30465



COUNTY SURVEYOR'S STATEMENT

This Corner Record was received SEPTEMBER 8, 2004 and examined and filed SEPTEMBER 30, 2004

Signed [Signature] Title COUNTY SURVEYOR



County Surveyor's Comment _____

BASIS OF BEARINGS

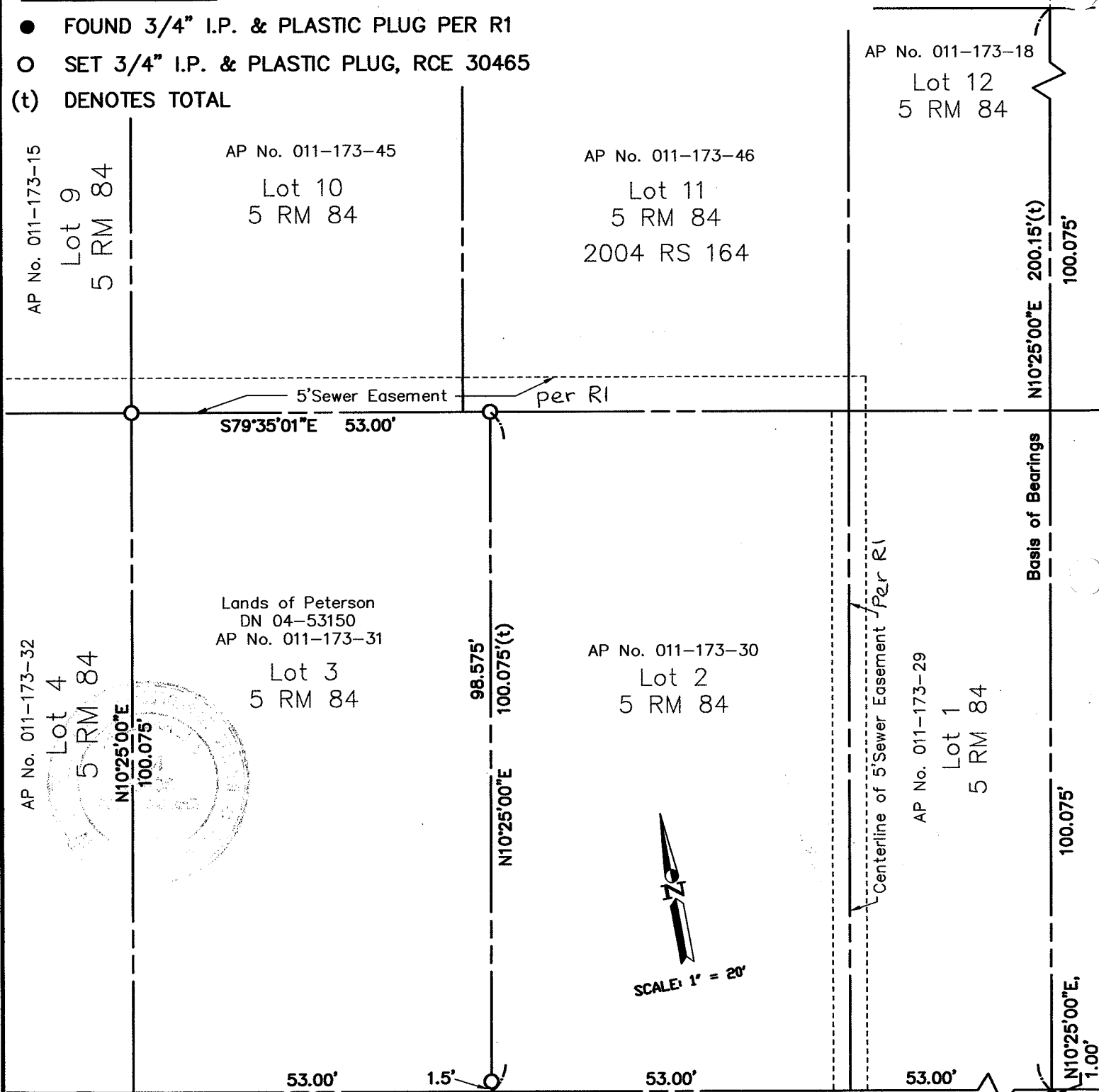
Fnd Open 1/2" IP

The basis of bearing for this survey is S10°25'W 221.15' between the found iron monument as shown upon Marin County Record of Survey, book 2004, page 164. (R I)

CURTIS AVENUE
(40' R/W)

LEGEND

- FOUND 3/4" I.P. & PLASTIC PLUG PER R1
- SET 3/4" I.P. & PLASTIC PLUG, RCE 30465
- (t) DENOTES TOTAL



LAUREL PLACE (45' R/W)
Note: All distances are in feet and decimals thereof.

SHEET	1	OF	1
SCALE:	1" = 20'	DESIGN:	AS
DATE:	8-27-04	DRAWN:	AS
FILE:	2004-151	CHECKED:	J.L.H.

G:\Land Projects\2004-151\dwg\CorRec.dwg

J.L. ENGINEERING
CIVIL ENGINEERS—LAND SURVEYORS
1530 4th ST., SAN RAFAEL, CA. 94901 (415) 457-6647

Corner Record
Lands of Peterson - 228 Laurel Place
APN 011-173-31, San Rafael, Marin County, CA