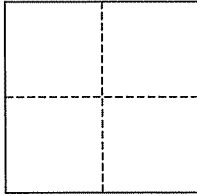


CORNER RECORD

City of San Rafael

Document Number APN 11-173-30
County of Marin, California

Brief Legal Description Lot 2, 5-RM-84



CORNER TYPE

Government Corner Control
Meander Property
Rancho Other
Date of Survey May 31, 2006

COORDINATES (Optional)

N. _____
E. _____
Zone _____ NAD27 NAD83
NAD83 Epoch _____
Elev. _____
Vert. Datum: NGVD29 NAVD88
Meas. Units: Metric Imperial

Corner- Left as found Found and tagged Established Reestablished Rebuilt

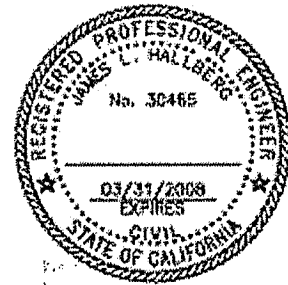
Identification and type of corner found: Evidence used to identify or procedure used to establish or reestablish the corner:
Found Iron Pin Monuments on Curtis Ave. & Laurel Place, per 5-RM-84; all points set per 2004-OS-164.

A description of the physical condition of the monument as found and as set or reset: Iron Pipe&Plug (RCE 30465)
re-established corner at a 1.5' P/L extension, and a 2"x2" wood Hub&Tack on P/L as noted; all points set per
2004-OS-164.

SURVEYOR'S STATEMENT

This corner Record was prepared by me or under my direction in conformance with
the Land Surveyor's Act on Oct 12, 2006

Signed [Signature] P.L.S. or R.C.E. No. 30465



COUNTY SURVEYOR'S STATEMENT

This Corner Record was received OCTOBER 12, 2006
and examined and filed OCTOBER 19, 2006

Signed [Signature] P.L.S. or R.C.E. No. 7128

Title COUNTY SURVEYOR



County Surveyor's Comment _____

BASIS OF BEARINGS

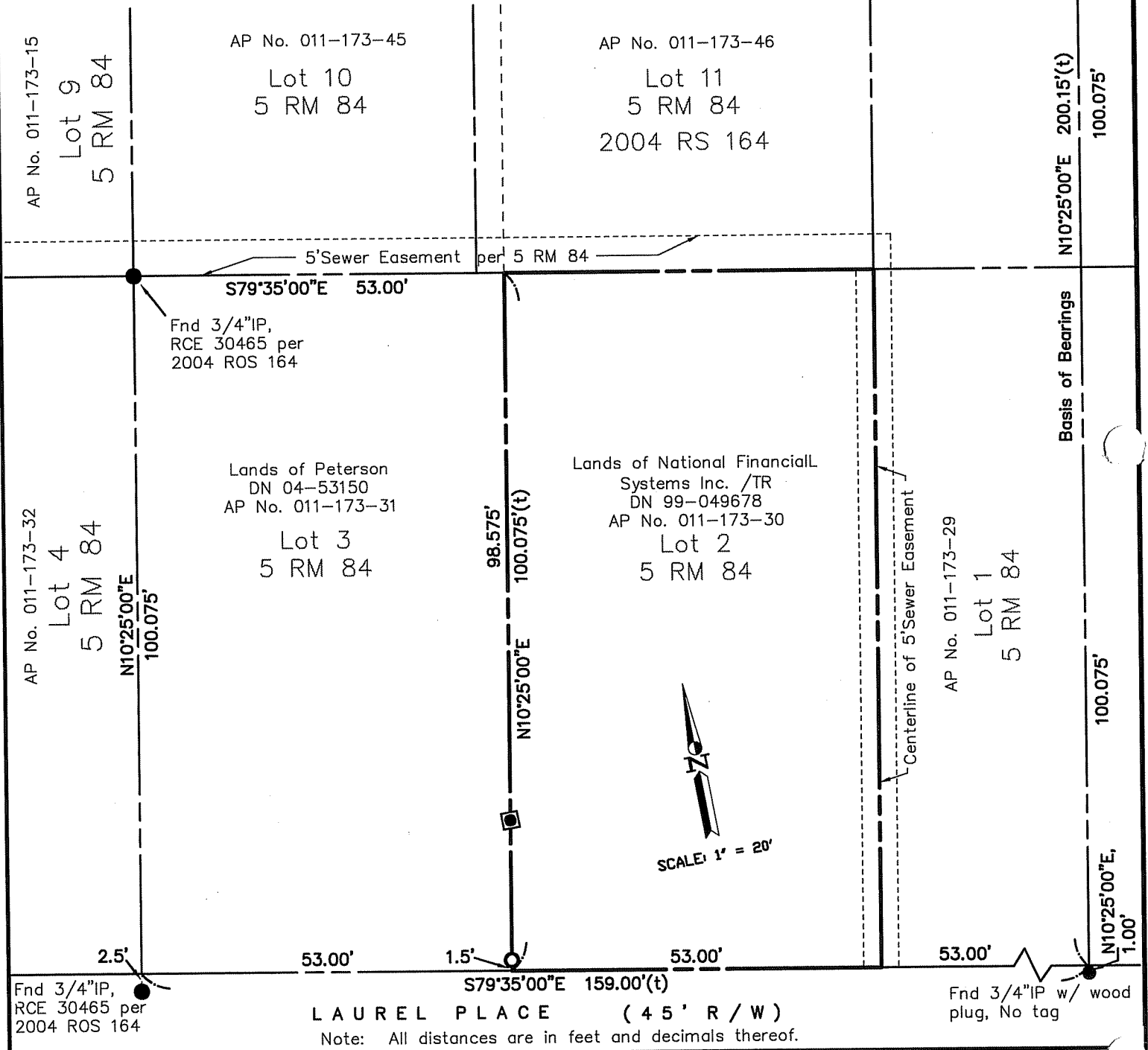
The basis of bearing for this survey is S10°25'W 221.15' between the found iron monuments as shown upon Marin County Record of Survey, book 2004, page 164.

Fnd Open 1/2"IP

LEGEND

- FOUND I.P., AS NOTED
- SET 3/4" I.P. & PLASTIC PLUG, RCE 30465
- SET 2"x2" WOOD HUB & TACK
- (t) DENOTES TOTAL

CURTIS AVENUE
(40' R/W)



LAUREL PLACE (45' R/W)

Note: All distances are in feet and decimals thereof.

SHEET	1	OF	1
SCALE:	1" = 20'	DESIGN:	XXX
DATE:	Aug 2006	DRAWN:	SMc
FILE:	2006-068	CHECKED:	J.L.H
2006-068\DWG\CORREC.DWG,COR-REC			

J.L. ENGINEERING
CIVIL ENGINEERS-LAND SURVEYORS
 1539 4th ST., SAN RAFAEL, CA. 94901 (415) 457-6647

Corner Record
 Lands of National Financial Systems Inc. /TR
 224 Laurel Pl., APN 011-173-30
 San Rafael, Marin County, CA