

CORNER RECORD

Assessor's Parcel No. 011-153-03

City of San Rafael County of Marin California

Brief Legal Description: Pcl A, 18 PM 29 Marin County Records

CORNER TYPE

COORDINATES (Optional)

Lot in Existing Land Division

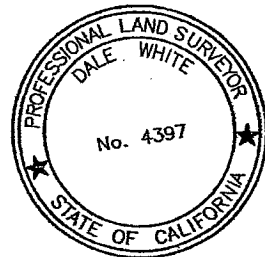
None

Corners - None Found. Re-established corners based on monuments shown on 24 RS 58. Set four property corner monuments as shown on this Corner Record.

Description of Monuments reset: Unless otherwise shown on this map, monuments set are 3/4 inch iron pipes and tags LS 4397.

SURVEYOR'S STATEMENT

This Corner Record was prepared by me or under my direction in conformance with the Land Surveyor's Act on September 12, 2013.

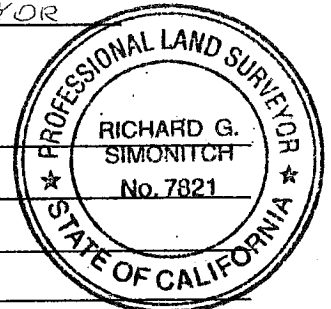


Signed Dale White LS 4397

COUNTY SURVEYOR'S STATEMENT

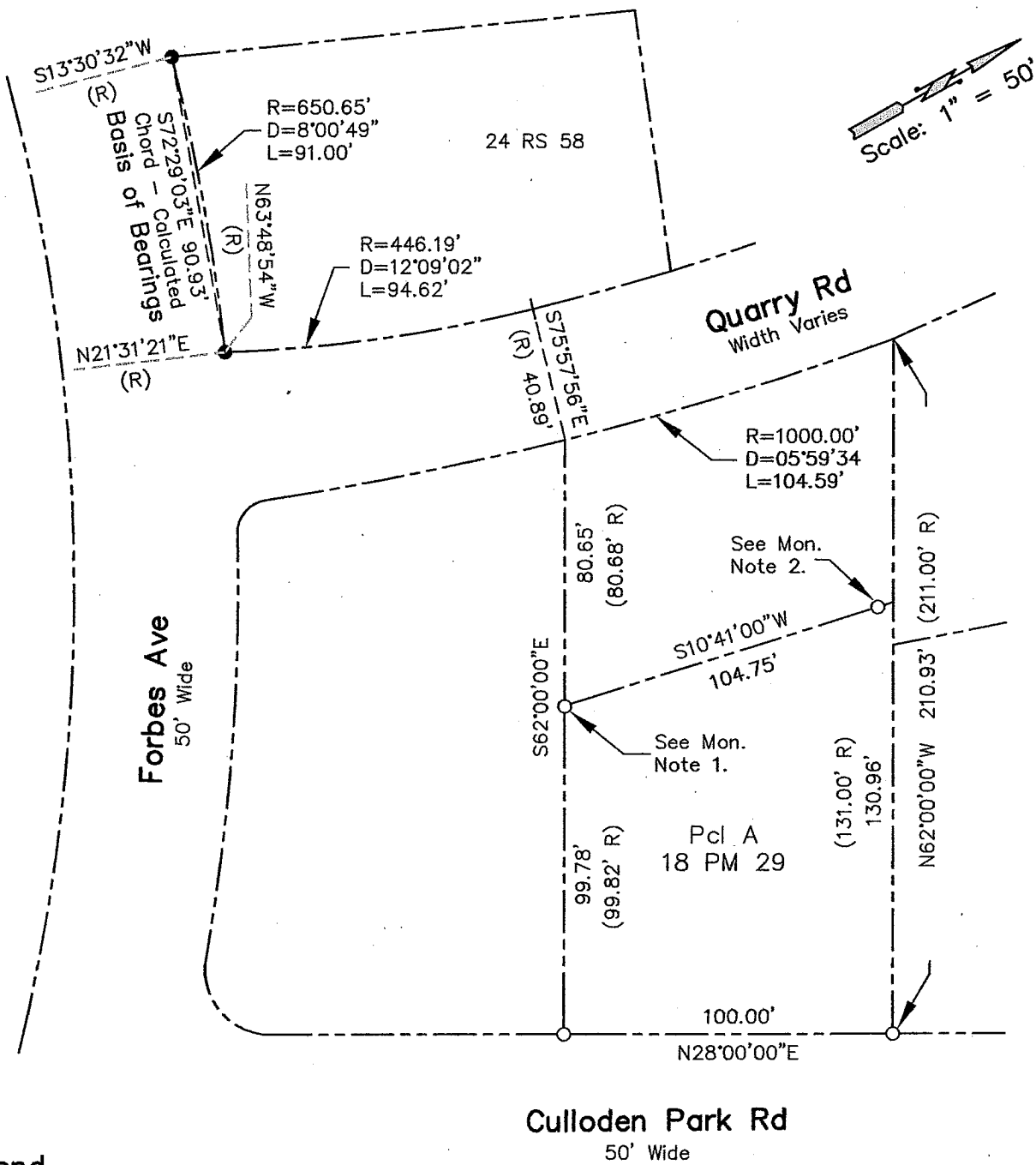
This Corner Record was received SEPTEMBER 20, 20 13, and examined and filed OCTOBER NOVEMBER 20th, 20 13.

Signed [Signature] Title DEPUTY CO. SURVEYOR



County Surveyor's Comments

Corner Record



Legend

- Property Line
- Set 3/4" Iron Pipe And Tag LS 4397 Unless Otherwise Noted.
- Found Nail and Tag LS 4402 per 24 RS 58, MCR

Monument Notes

1. Set Nail and tag LS 4397 in top fence runner S62°00'00"E 0.25' from corner.
2. Set Nail and tag LS 4397 in top fence runner S10°41'00"W 5.00' from corner.

15 Culloden Park Road
 San Rafael, CA
 APN 011-153-03

Corner Record

Jocelyn Property Survey
 Pcl A, 18 PM 29
 Marin County Records