

# CORNER RECORD



JERRICO ASSOCIATES  
SUITE 27  
77 MARK DRIVE  
SAN RAFAEL, CA 94903

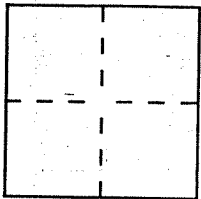
7060

Document Number 11-151-09

City of San Rafael

County of Marin, California

Brief Legal Description Line of Lot 28/27 Map No.1 Forbes Reserve, 1 RM 16



### CORNER TYPE

Government Corner  Control   
Meander  Property   
Rancho  Other   
Date of Survey Dec 23, 1993

### COORDINATES (Optional)

N. \_\_\_\_\_  
E. \_\_\_\_\_  
Zone \_\_\_\_\_ Datum \_\_\_\_\_  
Elev. \_\_\_\_\_

Corner — Left as found  Found and tagged  Established  Reestablished  Rebuilt

Identification and type of corner found: Evidence used to identify or procedure used to establish or reestablish the corner:  
Sidewalk line established in 22 PM 14 up 'H' St.

**(A)** Pipe and copper plug at corner Mission and H Lot 36

A description of the physical condition of the monument as found and as set or reset: \_\_\_\_\_

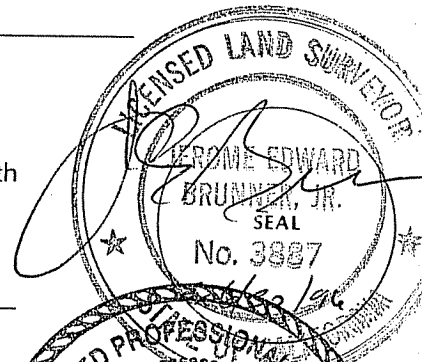
**(B)** Set plug and tag LS 3887 as s/w centerline offset 4.17' to corner.

**(C)** Set plug and tag LS 3887 in cone base of, very old (cut-off), fc. post

### SURVEYOR'S STATEMENT

This Corner Record was prepared by me or under my direction in conformance with the Land Surveyors' Act on Dec 23 1993.

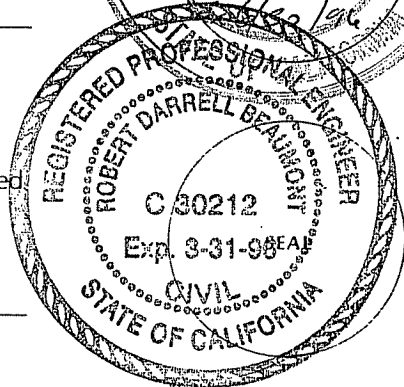
Signed [Signature] L.S. or R.C.E. Number LS 3887



### COUNTY SURVEYOR'S STATEMENT

This Corner Record was received January 4 1994 and examined and filed 1-4 1994.

Signed [Signature] Title DCS



County Surveyor's Comment \_\_\_\_\_

