

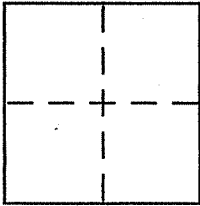
CORNER RECORD

Document Number APN 011-102-16

City of San Rafael

County of Marin, California

Brief Legal Description Lands of Humphrey & Fiori per 1998 M 75



CORNER TYPE

Government Corner Control
Meander Property
Rancho Other
Date of Survey 02-04-10

COORDINATES (Optional)

N. _____
E. _____
Zone _____ NAD27 NAD83
NAD83 Epoch _____
Elev. _____
Vert. Datum: NGVD29 NAVD88
Meas. Units: Metric Imperial

Corner - Left as found Found and tagged Established Reestablished Rebuilt

Identification and type of corner found: Evidence used to identify or procedure used to establish or reestablish the corner:

See page 2 of 2

A description of the physical condition of the monument as found and as set or reset:

See page 2 of 2

SURVEYOR'S STATEMENT

This Corner Record was prepared by me or under my direction in conformance with the Land Surveyor's Act on 3/26 2010

Signed [Signature] P.L.S. or R.C.E. No. 6784



COUNTY SURVEYOR'S STATEMENT

This Corner Record was received MARCH 29, 2010

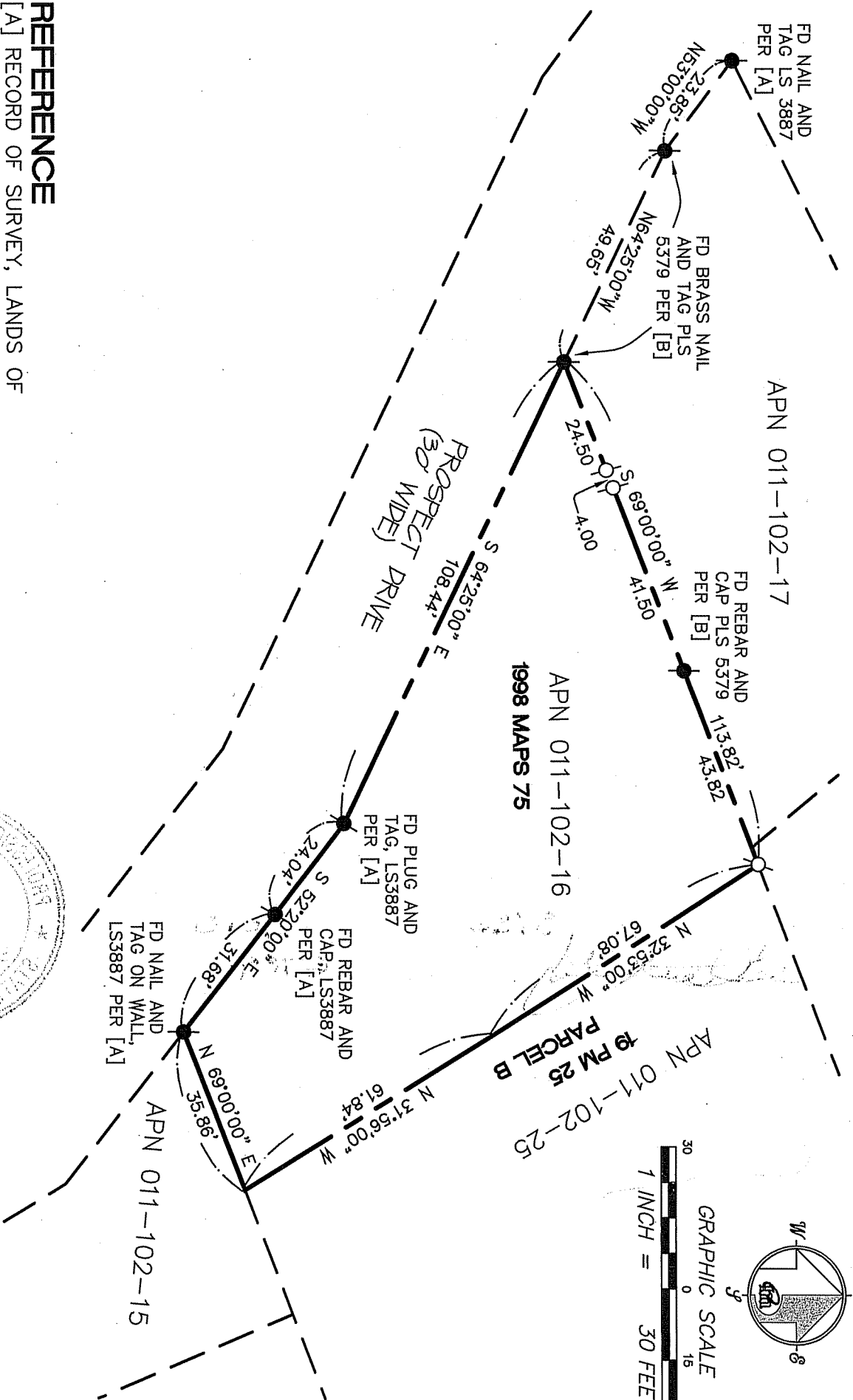
and examined and filed APRIL 9, 2010

Signed [Signature] P.L.S. or R.C.E. No. 7128

Title COUNTY SURVEYOR



County Surveyor's Comment _____



REFERENCE

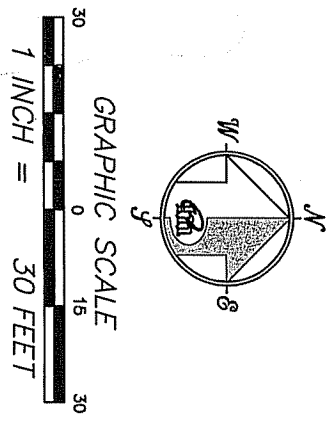
[A] RECORD OF SURVEY, LANDS OF FRANCHETTI, FILED FOR RECORD 18 JUNE 1998 IN BOOK 1998 OF MAPS, AT PAGE 75, MARIN COUNTY RECORDS.

[B] CORNER RECORD, APN 11-102-17, FILED NOVEMBER 21, 2008.

LEGEND

- FOUND MONUMENT AS NOTED
- SET 5/8" REBAR WITH CAP, PLS 6784

NOTE
RECORD=MEASURED



MERIDIAN SURVEYING, INC.
CORNER RECORD

1812 UNION STREET
SAN FRANCISCO, CA 94133
(415) 440-4131

10006
777 GRAND AVENUE, SUITE 202
SAN RAFAEL, CA 94901
(415) 456-5450

info@meridiansurvey.com