

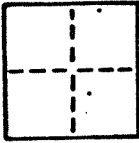
CORNER RECORD

A.P. # 11-041-01

COUNTY OF Marin T. _____ R. _____ MERIDIAN _____ CALIFORNIA

CORNER TYPE: GOVT. CORNER MEANDER RANCHO CONTROL OTHER

CORNER IDENTIFICATION - DATE OF VISIT _____ 19__



CORNER - LEFT AS FOUND FOUND AND TAGGED REESTABLISHED OBLITERATED CORNER RESULT

PHYSICAL DESCRIPTION OF CORNER FOUND, EVIDENCE AND METHOD USED TO IDENTIFY OR REESTABLISH

Found nail in concrete at front corner Lot #7 and found cross on sidewalk at front corner Lot #8 as shown on sketch.

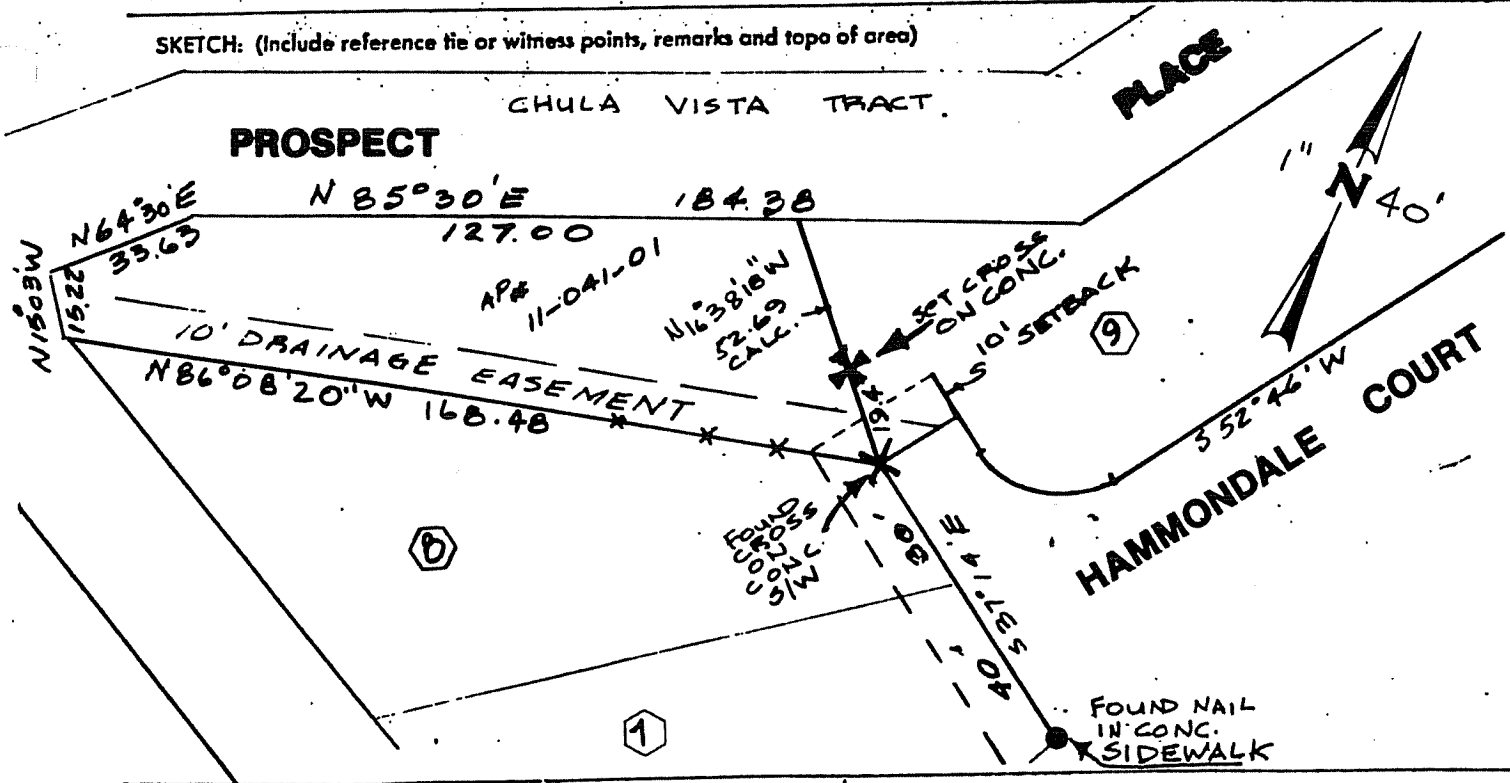
AP# 11-041-01

PHYSICAL DESCRIPTION OF MONUMENTS RESULT OR PERPETUATED

Set cross on concrete driveway along property line between Lots #8 and #9.

CALIFORNIA COORDINATE SYSTEM ORDER: FIRST SECOND THIRD
STATIONS USED: NGS (USC & GS) STATE COUNTY OTHER STATION _____ STATION _____
ZONE _____ ELEVATION _____ NORTHINGS (Y) _____ EASTINGS (X) _____

SKETCH: (Include reference tie or witness points, remarks and topo of area)



SURVEYOR'S CERTIFICATE
 THIS CORNER RECORD WAS PREPARED BY ME OR UNDER MY DIRECTION IN CONFORMANCE WITH THE LAND SURVEYING ACT ON February 1988
 SIGNED: W. G. [Signature] No. 15945
 L.S. or R.C.E. No.: 15,945 Exp. 7/30/89
 REGISTERED PROFESSIONAL ENGINEER
 CIVIL
 STATE OF CALIFORNIA

COUNTY SURVEYOR'S CERTIFICATE
 THE CORNER RECORD WAS RECEIVED 3/10 1988
 AND EXAMINED AND FILED 3/11
 BY: PDP
 TITLE: DEPUTY COUNTY SURVEYOR
 DOCUMENT No. _____
 STATEMENT ON BACK OF SHEET _____
 REGISTERED PROFESSIONAL ENGINEER
 ROBERT W. PARRELL BEALLMONT
 CIVIL
 STATE OF CALIFORNIA
 No. 30212
 YES CIVIL

ex. 3-31-88