

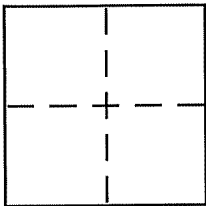
CORNER RECORD

Document Number 011-011-20

City of San Rafael

County of Marin, California

Brief Legal Description Lands of Widmer per 31 RS 45



CORNER TYPE

Government Corner Control
Meander Property
Rancho Other
Date of Survey 10/6/11

COORDINATES (Optional)

N. _____
E. _____
Zone _____ NAD27 NAD83
NAD83 Epoch _____
Elev. _____
Vert. Datum: NGVD29 NAVD88
Meas. Units: Metric Imperial

Corner - Left as found Found and tagged Established Reestablished Rebuilt

Identification and type of corner found: Evidence used to identify or procedure used to establish or reestablish the corner:

As shown on "sheet 2"

A description of the physical condition of the monument as found and as set or reset:

set 5/8" rebar and cap, brass nail and tag and 1" iron pipe and plastic plug, PLS 6784 as shown on page 2 of 2

SURVEYOR'S STATEMENT

This Corner Record was prepared by me or under my direction in conformance with the Land Surveyor's Act on 10/11 2011

Signed [Signature] P.L.S or R.C.E. No. 6784



COUNTY SURVEYOR'S STATEMENT

This Corner Record was received 10-24-2011

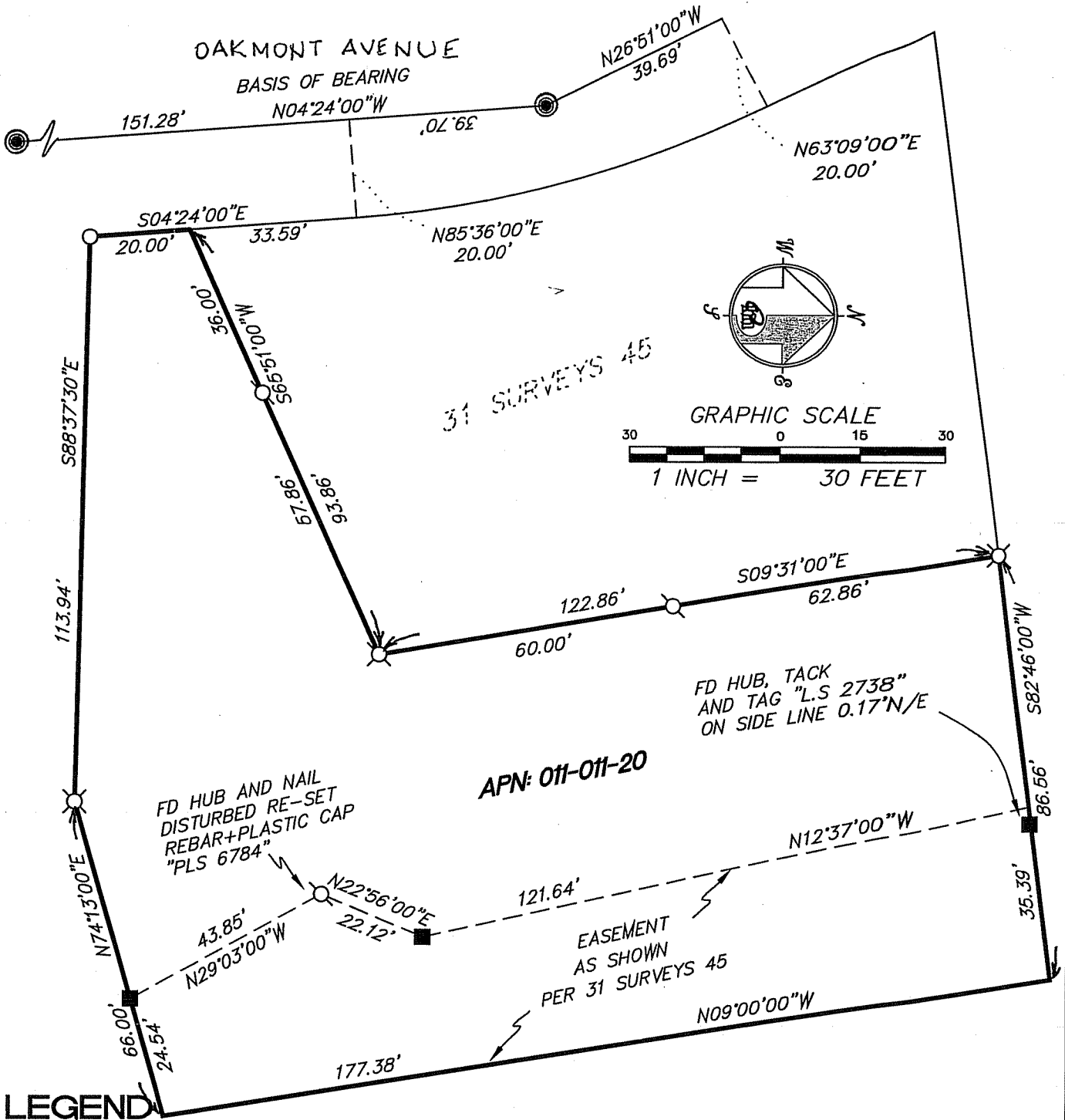
and examined and filed 11-16-2011

Signed [Signature] P.L.S or R.C.E. No. 7128

Title COUNTY SURVEYOR



County Surveyor's Comment _____



LEGEND

- ⊗ SET 1" IRON PIPE AND PLASTIC PLUG "PLS 6784"
- SET NAIL AND TAG "PLS 6784"
- ⊗ SET 5/8" REBAR WITH PLASTIC CAP "PLS 6784"
- FD 2"x2" HUB, NAIL AND TAG "L.S 2738"
- FOUND STREET MON

CORNER RECORD

MERIDIAN SURVEYING ENGINEERING, INC.

1812 UNION STREET
SAN FRANCISCO, CA 94123
(416) 440-4131

777 GRAND AVENUE, SUITE 202
SAN RAFAEL, CA 94901
(415) 456-5450

info@meridiansurvey.com