

# CORNER RECORD

Agency Index

19-149

Document Number

APN 010-301-11

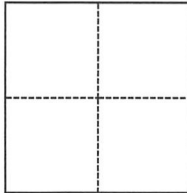
City of SAN RAFAELCounty of MARIN

, California

Brief Legal Description

LOT 6 OF U/MAPS/3 O.R

## CORNER TYPE



- ☐ Government Corner ☐ Control  
☐ Meander ☒ Property  
☐ Rancho ☐ Other

Date of Survey 12/19/19

## COORDINATES (Optional)

N. \_\_\_\_\_ E. \_\_\_\_\_

Elevation \_\_\_\_\_

Units

☐ Metric☐ U.S. Survey Foot

Horizontal Datum \_\_\_\_\_

Zone \_\_\_\_\_ Epoch Date \_\_\_\_\_

Vertical Datum \_\_\_\_\_

☐ Complies with Public Resources Code §§8801-8819☐ Complies with Public Resources Code §§8890-8902

PLS Act Ref.:

☐ 8765(d)☐ 8771☐ 8773☐ Other:Corner/  
Monument:☐ Left as found☐ Established☐ Rebuilt☐ Pre-Construction☐ Found and tagged☒ Reestablished☐ Referenced☐ Post-Construction

Narrative of corner identified and monument as found, set, reset, replaced, or removed:

☒ See sheet #2 for description(s):

## SURVEYOR'S STATEMENT

This Corner Record was prepared by me or under my direction in conformance with

the Professional Land Surveyors' Act on

12/20/19

Signed

[Signature]

P.L.S. or R.C.E. No.

7639

## COUNTY SURVEYOR'S STATEMENT

This Corner Record was received

DEC. 26, 2019

and examined and filed

APR. 14, 2020

Signed

[Signature]

P.L.S. or R.C.E. No.

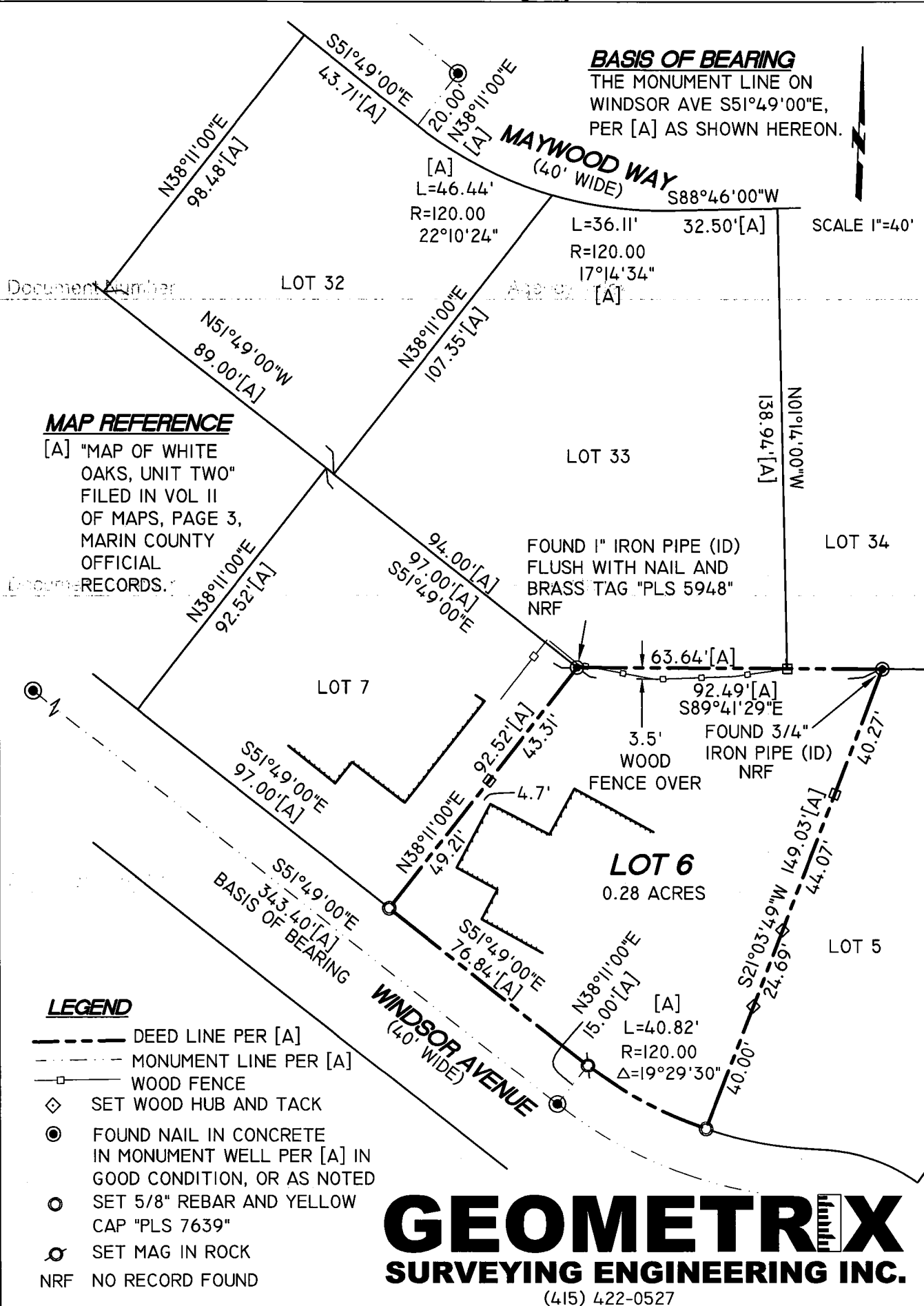
9292

Title

DEPUTY C.S.

County Surveyor's Comment





**GEOMETRIX**  
**SURVEYING ENGINEERING INC.**

(415) 422-0527