

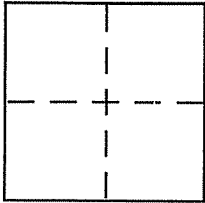
# CORNER RECORD

City of San Rafael

Document Number 3235-0R-161

County of Marin, California

Brief Legal Description Lot 12 6-RM-16



## CORNER TYPE

Government Corner ☐ Control ☐  
Meander ☐ Property ☒  
Rancho ☐ Other ☐  
Date of Survey 6/10/10

## COORDINATES (Optional)

N. \_\_\_\_\_  
E. \_\_\_\_\_  
Zone \_\_\_\_\_ NAD27 ☐ NAD83 ☐  
NAD83 Epoch \_\_\_\_\_  
Elev. \_\_\_\_\_  
Vert. Datum: NGVD29 ☐ NAVD88 ☐  
Meas. Units: Metric ☐ Imperial ☐

Corner - Left as found ☐ Found and tagged ☐ Established ☐ Reestablished ☐ Rebuilt ☐

Identification and type of corner found: Evidence used to identify or procedure used to establish or reestablish the corner:

See pg. 2

A description of the physical condition of the monument as found and as set or reset:

See pg. 2

## SURVEYOR'S STATEMENT

This Corner Record was prepared by me or under my direction in conformance with the Land Surveyor's Act on 6/17/10

Signed William E. Schreiber P.L.S. or R.C.E. No. 5814

## COUNTY SURVEYOR'S STATEMENT

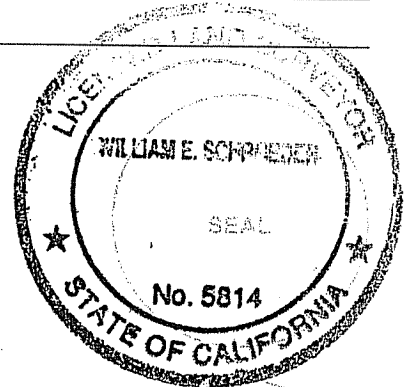
This Corner Record was received JUNE 21, 2010

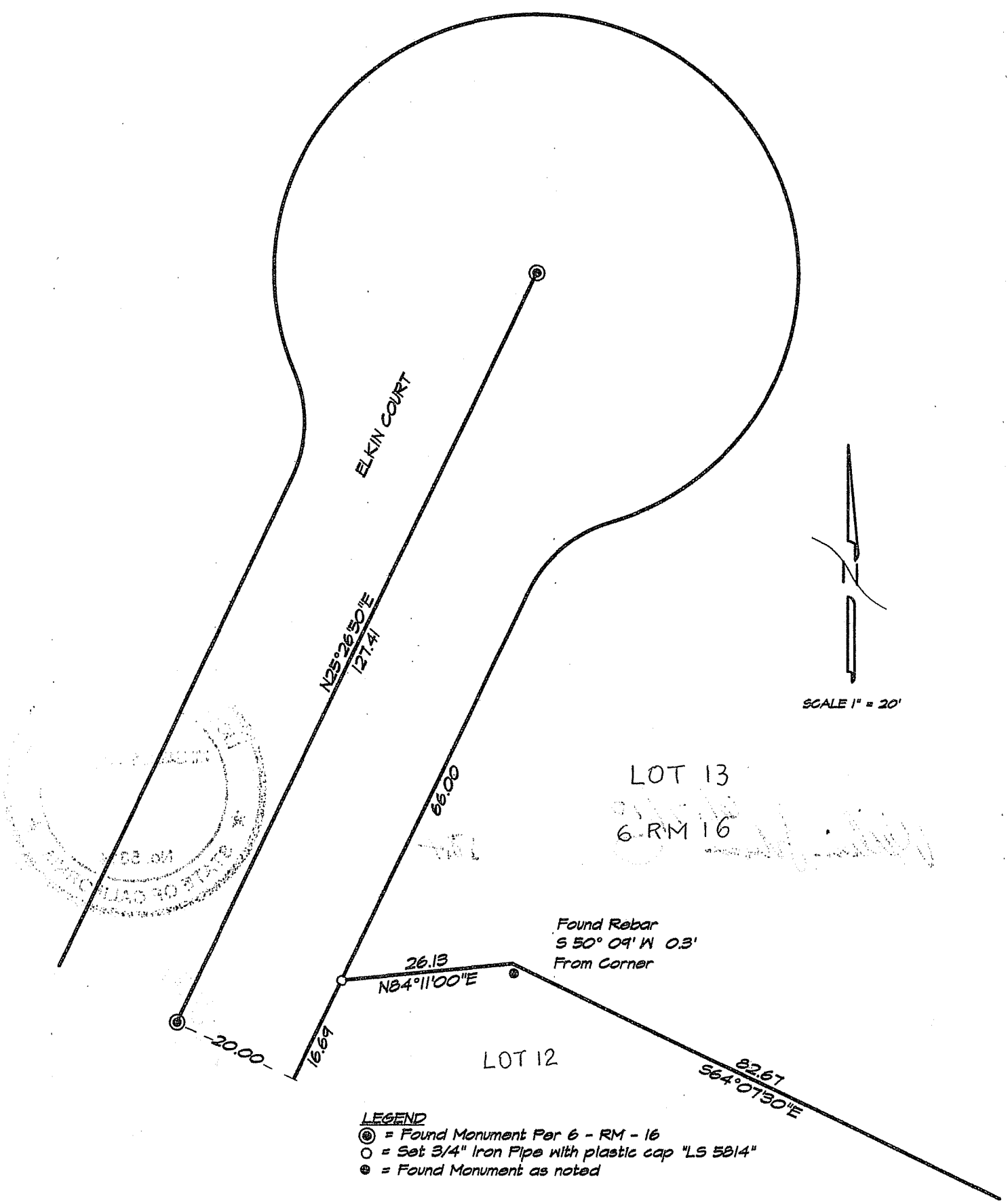
and examined and filed JULY 20, 2010

Signed [Signature] P.L.S. or R.C.E. No. 7128

Title COUNTY SURVEYOR

County Surveyor's Comment \_\_\_\_\_





SCALE 1" = 20'

LOT 13

6-RM 16

Found Rebar  
S 50° 09' W 0.3'  
From Corner

LOT 12

LEGEND

- ⊙ = Found Monument Per 6 - RM - 16
- = Set 3/4" Iron Pipe with plastic cap "LS 5814"
- ⊕ = Found Monument as noted