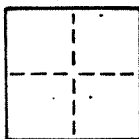


CORNER RECORD

COUNTY OF MARIN T. R. MERIDIAN CALIFORNIA
 CORNER TYPE: GOV'T. CORNER ☐ MEANDER ☐ RANCHO ☐ CONTROL ☐ OTHER ☐
 CORNER IDENTIFICATION — DATE OF VISIT 19



10-261-06
 A.P. # 114-100-87

CORNER — LEFT AS FOUND ☐ FOUND AND TAGGED ☐ REESTABLISHED OBLITERATED CORNER ☐ REBUILT ☐

PHYSICAL DESCRIPTION OF CORNER FOUND; EVIDENCE AND METHOD USED TO IDENTIFY OR REESTABLISH

BASED ON FOUND MONUMENTS AS SHOWN ON MAP FILED IN BOOK 6 OF
 MAPS AT PAGE 16, MARIN COUNTY
 RECORDS.

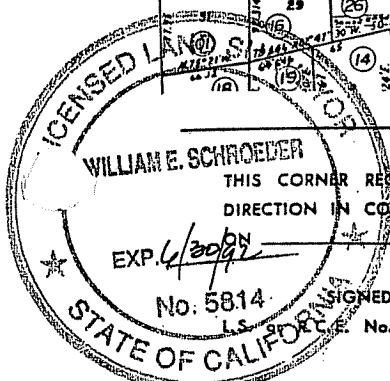
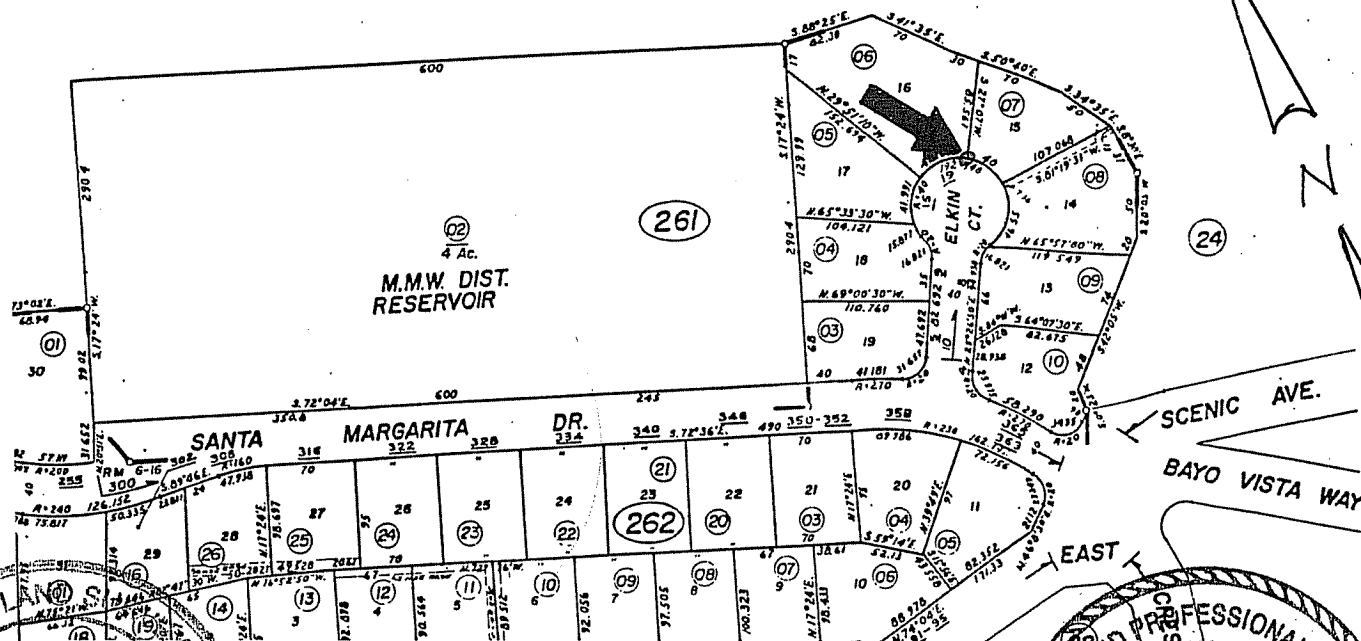
SAN RAFAEL

PHYSICAL DESCRIPTION OF MONUMENTS REBUILT OR PERPETUATED

3/4" I.P. WITH PLASTIC CAP, TAG # LS 5214

CALIFORNIA COORDINATE SYSTEM ORDER: FIRST ☐ SECOND ☐ THIRD ☐
 STATIONS USED: NGS (USC & GS) ☐ STATE ☐ COUNTY ☐ OTHER ☐ STATION STATION
 ZONE ELEVATION NORTHINGS (Y) EASTINGS (X)

SKETCH: (Include reference tie or witness points, remarks and topo of area)



SURVEYOR'S CERTIFICATE

THIS CORNER RECORD WAS PREPARED BY ME OR UNDER MY
 DIRECTION IN CONFORMANCE WITH THE LAND SURVEYORS ACT

Signed: William Schroeder
 Date: 5/22 1992
 License No.: 5814

SEAL

COUNTY SURVEYOR'S CERTIFICATE

THE CORNER RECORD WAS RECEIVED
 AND EXAMINED AND

BY:
 TITLE: Exp. 3-31-00

DOCUMENT No.

STATEMENT ON BACK OF SHEET

