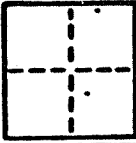


CORNER RECORD AP# 10-252-20

COUNTY OF Marin T. _____ R. _____ MERIDIAN _____ CALIFORNIA
 CORNER TYPE: GOVT. CORNER ☐ MEANDER ☐ RANCHO ☐ CONTROL ☐ OTHER ☒
 CORNER IDENTIFICATION — DATE OF VISIT November 1986



CORNER — LEFT AS FOUND ☐ FOUND AND TAGGED ☐ REESTABLISHED OBLITERATED CORNER ☐ REBUILT ☒

PHYSICAL DESCRIPTION OF CORNER FOUND; EVIDENCE AND METHOD USED TO IDENTIFY OR REESTABLISH

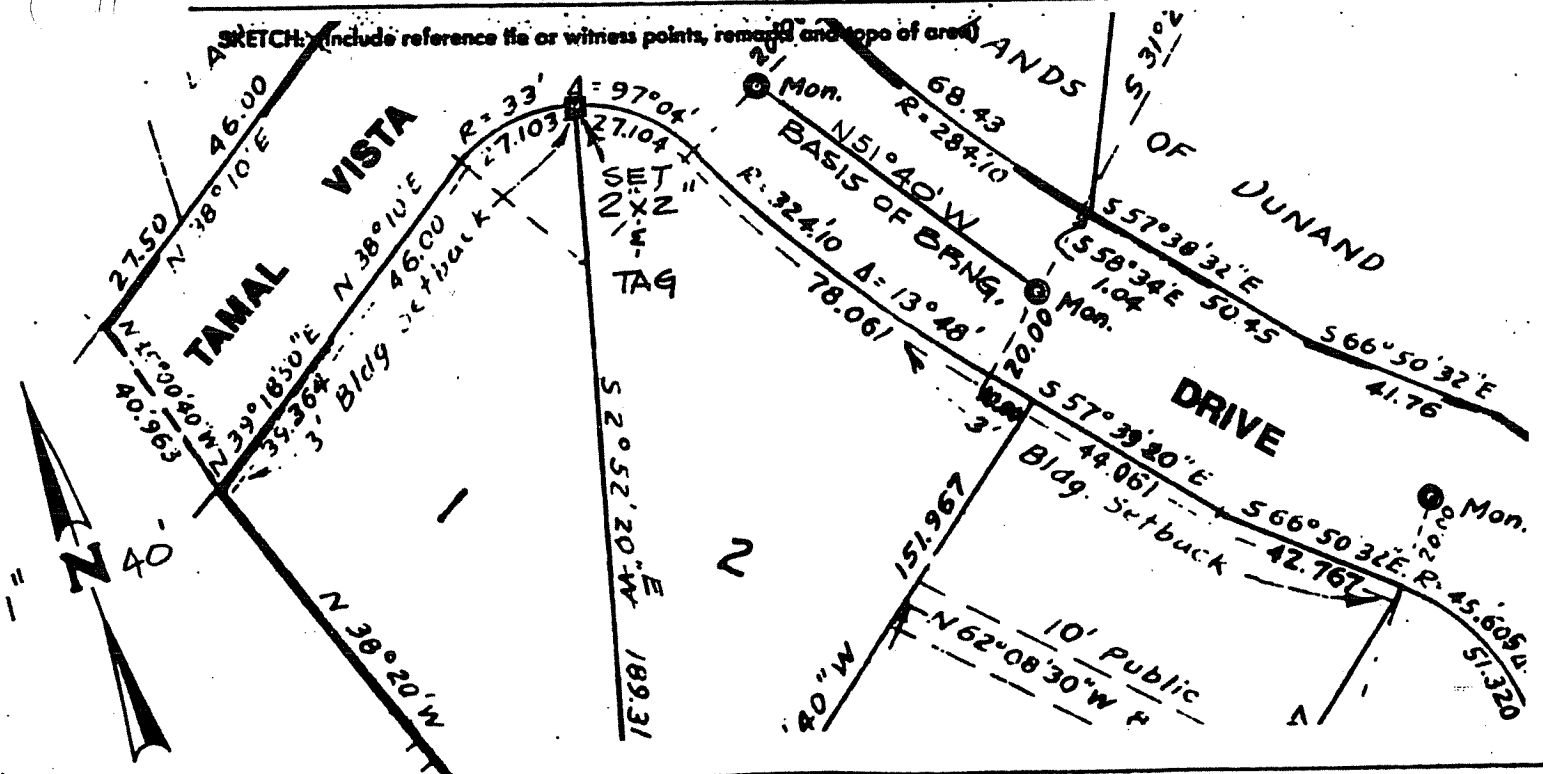
Found standard street monument as shown on Recorded Map Book 9, Page 21.

PHYSICAL DESCRIPTION OF MONUMENTS REBUILT OR PERPETUATED

Set redwood 2" x 2" and tag RCE 15945.

CALIFORNIA COORDINATE SYSTEM ORDER: FIRST ☐ SECOND ☐ THIRD ☐
 STATIONS USED: NGS (USC & GS) ☐ STATE ☐ COUNTY ☐ OTHER ☒ STATION _____ STATION _____
 ZONE _____ ELEVATION _____ NORTHINGS (N) _____ EASTINGS (E) _____

SKETCH: (include reference tie or witness points, removed and topo of area)



SURVEYOR'S CERTIFICATE

CORNER RECORD WAS PREPARED BY ME OR UNDER MY
 DIRECTION IN CONFORMANCE WITH THE LAND SURVEYORS ACT

SIGNED: W. Edward Rode

L.C.E. No. 15945

COUNTY SURVEYOR'S CERTIFICATE

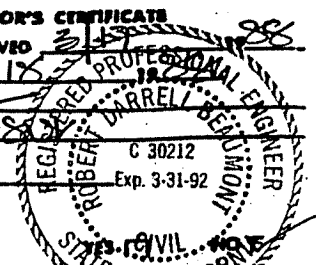
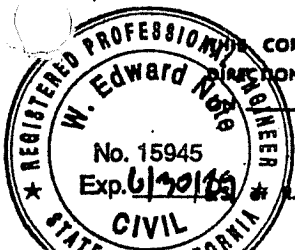
THE CORNER RECORD WAS RECEIVED
 AND EXAMINED AND FILED 3/17

BY: Robert M. Rode

TITLE: Deputy

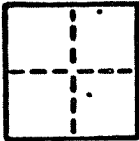
DOCUMENT No. _____

STATEMENT ON BACK OF SHEET



CORNER RECORD AP# 10-252-20

COUNTY OF Marin T. 1 R. 1 MERIDIAN CALIFORNIA
 CORNER TYPE: GOV'T. CORNER ☐ MEANDER ☐ RANCHO ☐ CONTROL ☐ OTHER ☐
 CORNER IDENTIFICATION — DATE OF VISIT November 19 86



CORNER — LEFT AS FOUND ☐ FOUND AND TAGGED ☐ REESTABLISHED OBLITERATED CORNER ☐ RESULT ☐

PHYSICAL DESCRIPTION OF CORNER FOUND, EVIDENCE AND METHOD USED TO IDENTIFY OR REESTABLISH

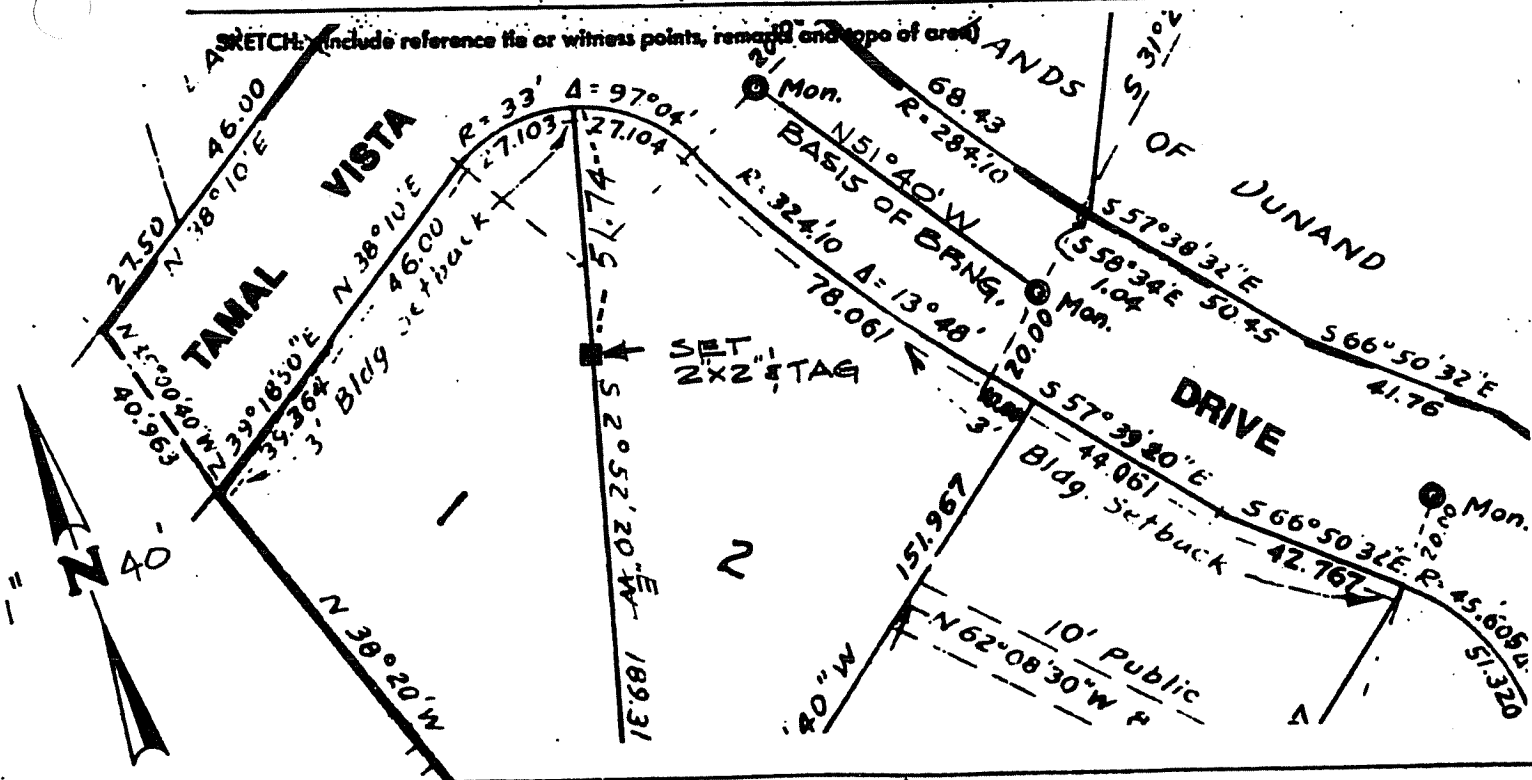
Found standard street monument as shown on Recorded Map Book 9, Page 21.

PHYSICAL DESCRIPTION OF MONUMENTS RESULT OR PERPETUATED

Set redwood 2" x 2" and tag RCE 15945

CALIFORNIA COORDINATE SYSTEM ORDER: FIRST ☐ SECOND ☐ THIRD ☐
 STATIONS USED: NGS (USC & GS) ☐ STATE ☐ COUNTY ☐ OTHER ☐ STATION STATION
 ZONE ELEVATION NORTHINGS (Y) EASTINGS (X)

SKETCH: (Include reference file or witness points, remarks and topo of area)



SURVEYOR'S CERTIFICATE

CORNER RECORD WAS PREPARED BY ME OR UNDER MY
 SUPERVISION IN CONFORMANCE WITH THE LAND SURVEYORS ACT

SIGNED: W. Edward Nute
 R.C.E. No. 15,945

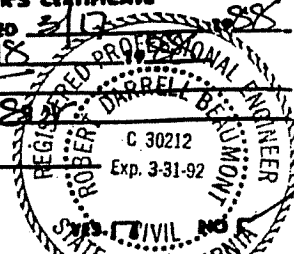
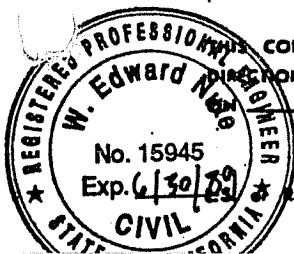
COUNTY SURVEYOR'S CERTIFICATE

THE CORNER RECORD WAS RECEIVED 3/12/88
 AND EXAMINED AND FILED 3/18/88

BY: RDP
 TITLE: Deputy

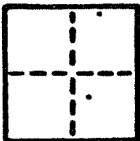
DOCUMENT No.

STATEMENT ON BACK OF SHEET



CORNER RECORD AP# 10-252-20

COUNTY OF Marin T. 1 R. 1 MERIDIAN CALIFORNIA
 CORNER TYPE: GOV'T. CORNER ☐ MEANDER ☐ RANCHO ☐ CONTROL ☐ OTHER ☐
 CORNER IDENTIFICATION — DATE OF VISIT November 19 86



CORNER — LEFT AS FOUND ☐ FOUND AND TAGGED ☐ REESTABLISHED OBLITERATED CORNER ☐ RESULT ☐

PHYSICAL DESCRIPTION OF CORNER FOUND, EVIDENCE AND METHOD USED TO IDENTIFY OR REESTABLISH

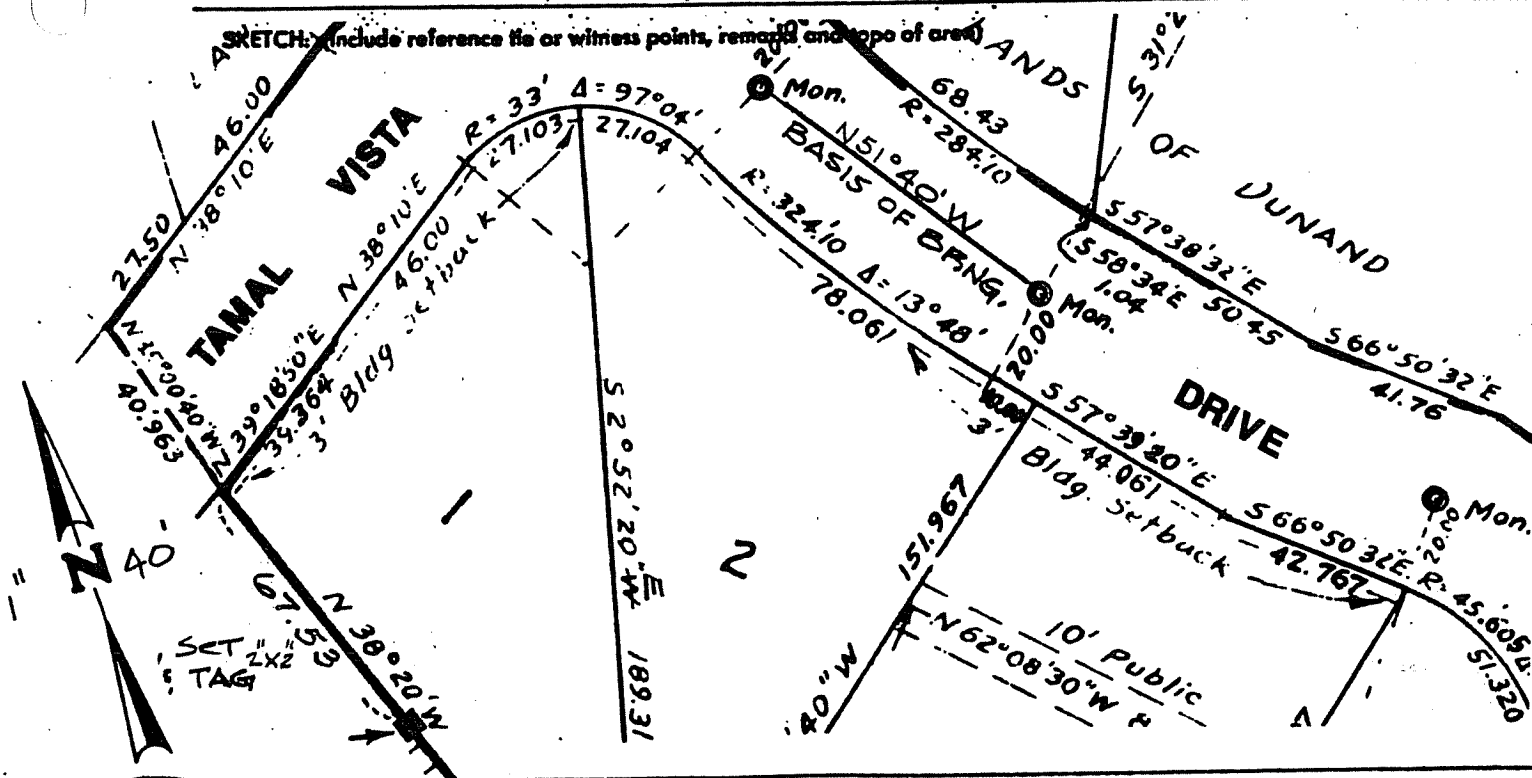
Found standard street monument as shown on Recorded Map Book 9, Page 21.

PHYSICAL DESCRIPTION OF MONUMENTS, RESULT OR PERPETUATED

Set redwood 2" x 2" and tag RCE 15945.

CALIFORNIA COORDINATE SYSTEM ORDER: FIRST ☐ SECOND ☐ THIRD ☐
 STATIONS USED: NGS (USC & GS) ☐ STATE ☐ COUNTY ☐ OTHER ☐ STATION STATION
 ZONE ELEVATION NORTHINGS (N) EASTINGS (E)

SKETCH: (include reference tie or witness points, remarks and topo of area)



SURVEYOR'S CERTIFICATE

CORNER RECORD WAS PREPARED BY ME OR UNDER MY
 SUPERVISION IN CONFORMANCE WITH THE LAND SURVEYORS ACT

SIGNED: W. Edward Nite

R.C.E. No. 15,945

COUNTY SURVEYOR'S CERTIFICATE

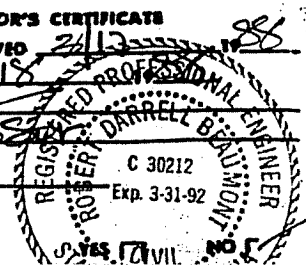
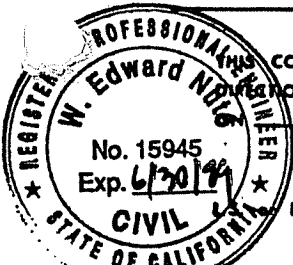
THE CORNER RECORD WAS RECEIVED 2/12/87
 AND EXAMINED AND FILED 3/18/87

BY: RDB

TITLE: DEVELOPMENT

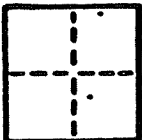
DOCUMENT No.

STATEMENT ON BACK OF SHEET



CORNER RECORD AP# 10-252-20

COUNTY OF Marin T. _____ R. _____ MERIDIAN _____ CALIFORNIA
 CORNER TYPE: GOVT. CORNER ☐ MEANDER ☐ RANCHO ☐ CONTROL ☐ OTHER ☐
 CORNER IDENTIFICATION — DATE OF VISIT November 1986



CORNER — LEFT AS FOUND ☐ FOUND AND TAGGED ☐ REESTABLISHED OBLITERATED CORNER ☐ RESULT ☐

PHYSICAL DESCRIPTION OF CORNER FOUND; EVIDENCE AND METHOD USED TO IDENTIFY OR REESTABLISH

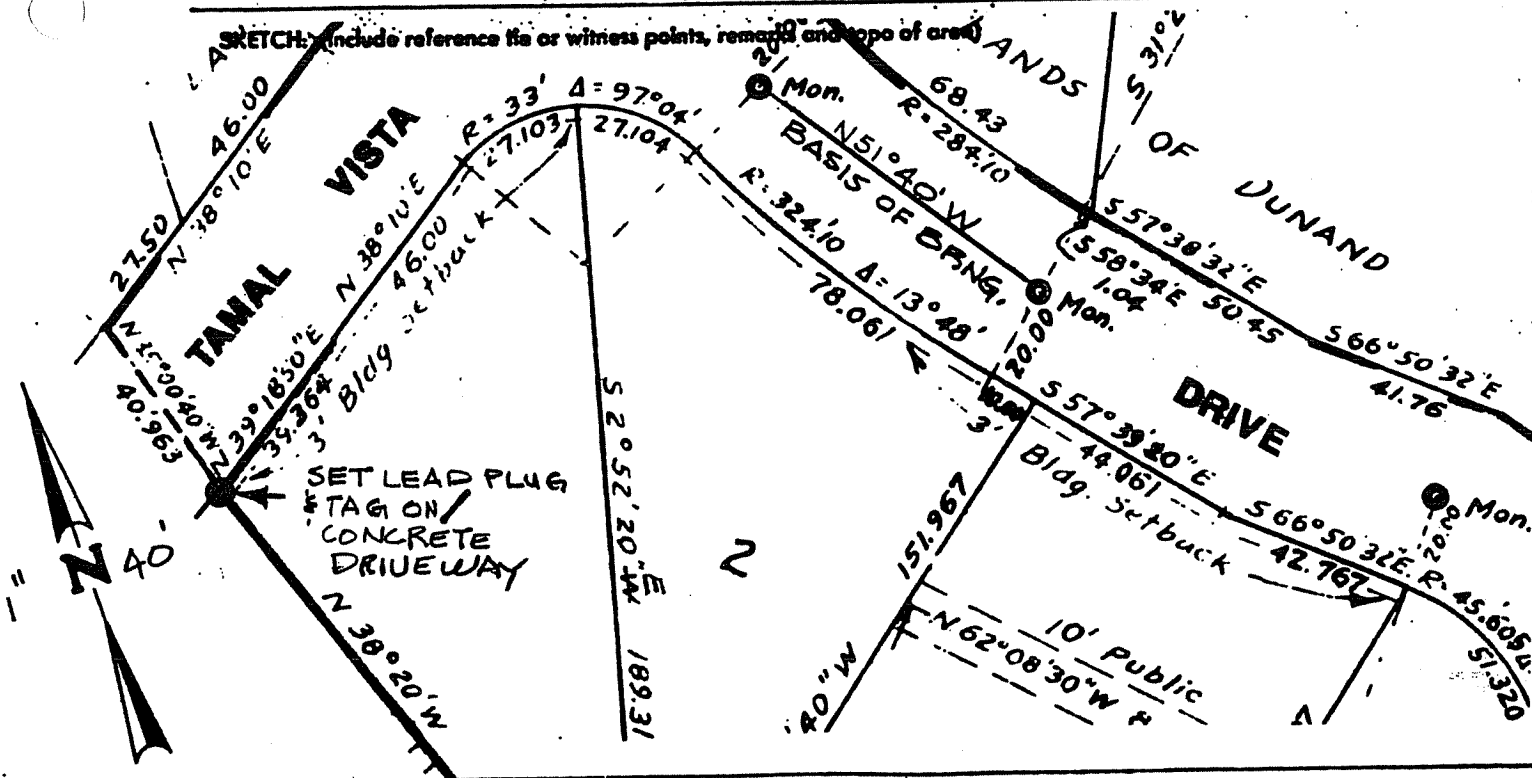
Found standard street monument as shown on Recorded Map Book 9, Page 21.

PHYSICAL DESCRIPTION OF MONUMENTS, RESULT OR PERPETUATED

Set lead plug and tag on concrete driveway RCE# 15945.

CALIFORNIA COORDINATE SYSTEM ORDER: FIRST ☐ SECOND ☐ THIRD ☐
 STATIONS USED: NGS (USC & GS) ☐ STATE ☐ COUNTY ☐ OTHER ☐ STATION _____ STATION _____
 ZONE _____ ELEVATION _____ NORTHINGS (N) _____ EASTINGS (E) _____

SKETCH: (Include reference line or witness points, remarks and topo of area)



SURVEYOR'S CERTIFICATE

THIS CORNER RECORD WAS PREPARED BY ME OR UNDER MY
 SUPERVISION IN CONFORMANCE WITH THE LAND SURVEYORS ACT

NO. 15945

1986

SIGNED: W. Edward Nute

R.C.E. No. 15945

COUNTY SURVEYOR'S CERTIFICATE

THE CORNER RECORD WAS RECEIVED
 AND EXAMINED AND FILED 3/17/87

BY: Robert Barrell

TITLE: Deputy

DOCUMENT No. _____

STATEMENT ON BACK OF SHEET

