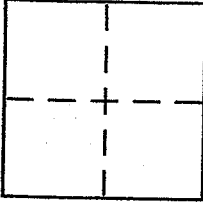


CORNER RECORD

Document Number 10-154.49
City of SAN RAFAEL County of MARIN, California

Brief Legal Description PORTION OF PARCEL 1, 25 PM 36, MCR



CORNER TYPE

Government Corner ☐ Control ☐
Meander ☐ Property ☒
Rancho ☐ Other ☐
Date of Survey 9/20 & 21/2005

COORDINATES (Optional)

N. _____
E. _____
Zone _____ NAD27 ☐ NAD83 ☐
NAD83 Epoch _____
Elev. _____
Vert. Datum: NGVD29 ☐ NAVD88 ☐
Meas. Units: Metric ☐ Imperial ☐

Corner - Left as found ☐ Found and tagged ☐ Established ☐ Reestablished ☒ Rebuilt ☐

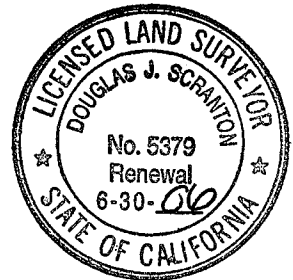
Identification and type of corner found: Evidence used to identify or procedure used to establish or reestablish the corner:

Reestablish the westerly 111 ft, more or less, of
the southerly line of Lot 1, 25 PM 36, from
existing standard street monuments on the
private street adjacent to & northerly of said
Lot 1 & as said monuments are shown upon 25 PM 36

A description of the physical condition of the monument as found and as set or reset: see sketch
on reverse side for details. Set 1/2" rebar with
PLS CAP 5379 affixed to top & driven flush with
surrounding grade or set randomly placed
hub & tack on said southerly line.

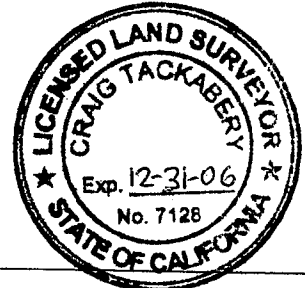
SURVEYOR'S STATEMENT

This Corner Record was prepared by me or under my direction in conformance with
the Land Surveyor's Act on October 5th 2005
Signed Douglas J. Scranton P.L.S. or R.C.E. No. PLS 5379



COUNTY SURVEYOR'S STATEMENT

This Corner Record was received OCTOBER 7, 2005
and examined and filed NOVEMBER 8, 2005
Signed Craig Tackabery P.L.S. or R.C.E. No. 7128
Title COUNTY SURVEYOR



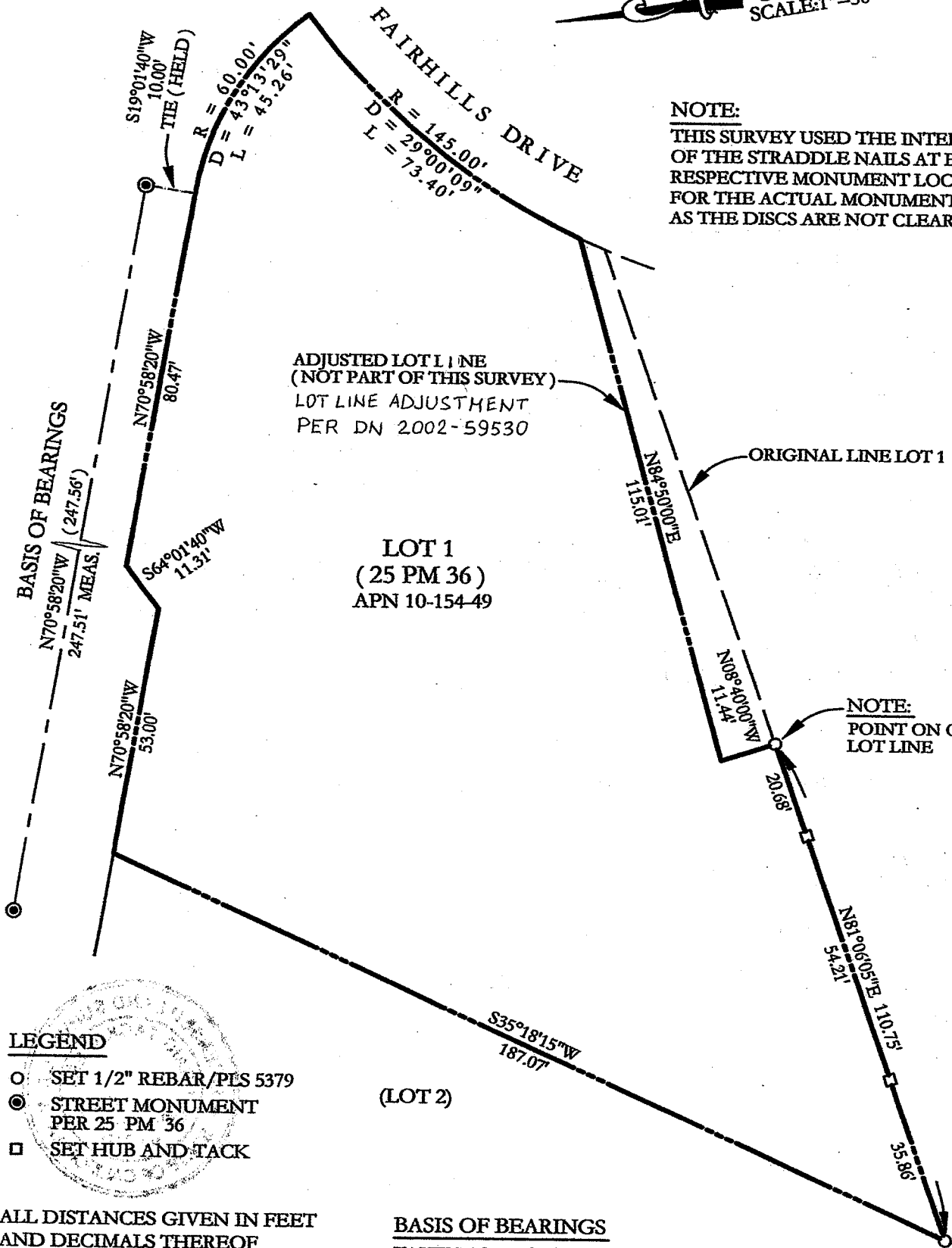
County Surveyor's Comment _____

JN 10346

Prepared by
DJ SCRANTON SURVEYING
NOVATO, CA



NOTE:
THIS SURVEY USED THE INTERSECTION
OF THE STRADDLE NAILS AT EACH
RESPECTIVE MONUMENT LOCATION
FOR THE ACTUAL MONUMENT POSITION
AS THE DISCS ARE NOT CLEARLY PUNCHED.



ALL DISTANCES GIVEN IN FEET
AND DECIMALS THEREOF
NO EASEMENTS ARE DEPICTED