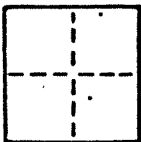


CORNER RECORD AP# 10-101-60

COUNTY OF MARIN T.        R.        MERIDIAN        CALIFORNIA  
CORNER TYPE: GOV'T. CORNER ☐ MEANDER ☐ RANCHO ☐ CONTROL ☐ OTHER ☒  
CORNER IDENTIFICATION — DATE OF VISIT NOV 1990



CORNER — LEFT AS FOUND ☐ FOUND AND TAGGED ☐ REESTABLISHED OBLITERATED CORNER ☐ RESULT ☒

PHYSICAL DESCRIPTION OF CORNER FOUND, EVIDENCE AND METHOD USED TO IDENTIFY OR REESTABLISH

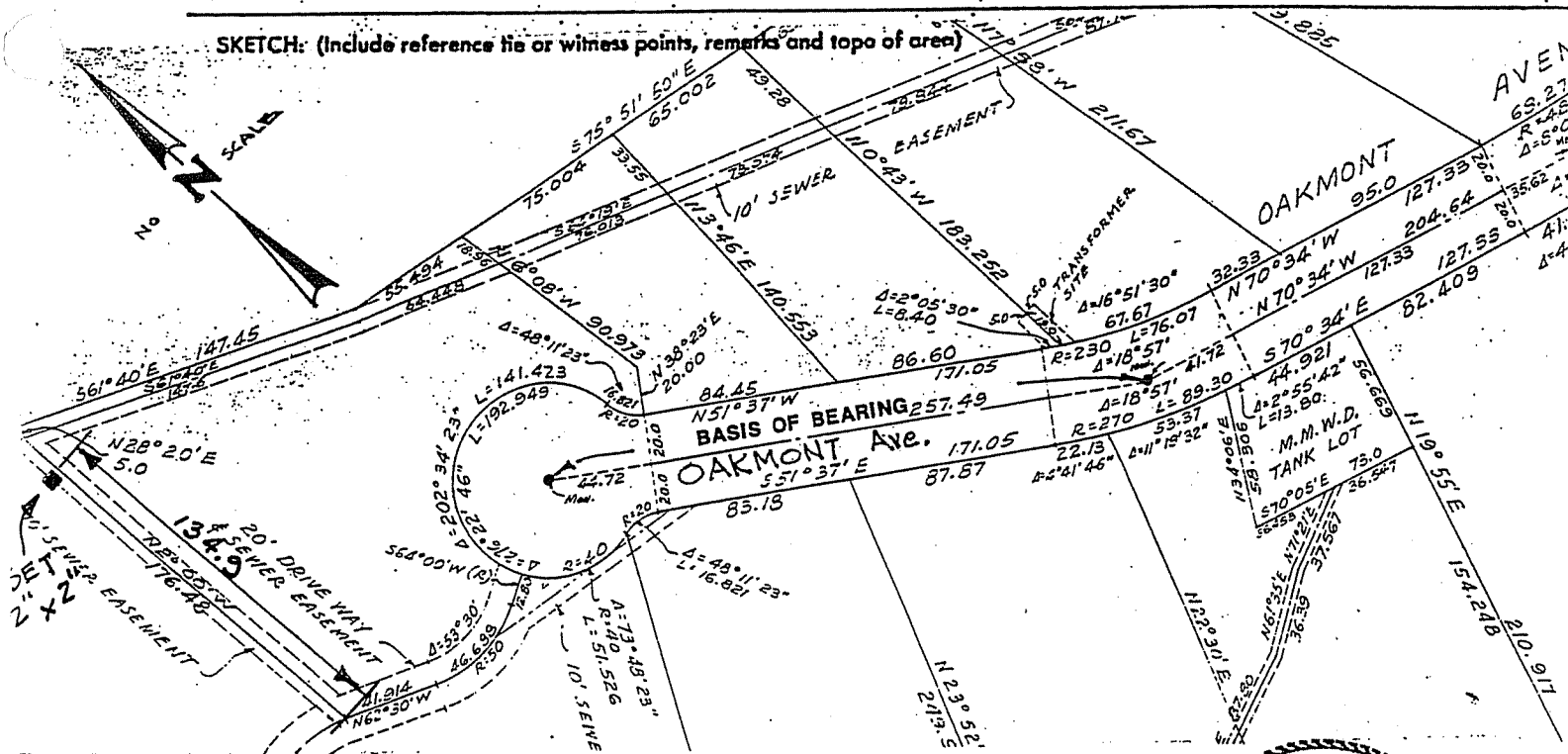
**BASIS OF BEARING FOUND CITY MONUMENTS AS SHOWN**  
**6 ROS 4**

PHYSICAL DESCRIPTION OF MONUMENTS: RESULT OR PERPETUATED

**SET REDWOOD 2"x2" & TAG RCE #15945**

CALIFORNIA COORDINATE SYSTEM ORDER: FIRST ☐ SECOND ☐ THIRD ☐  
STATIONS USED: NGS (USC & GS) ☐ STATE ☐ COUNTY ☐ OTHER ☒ STATION         
ZONE        ELEVATION        NORTHINGS (Y)        EASTINGS (X)       

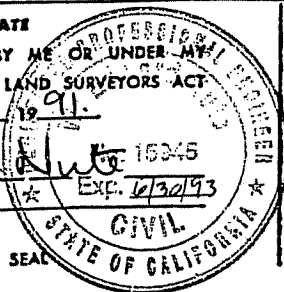
SKETCH: (Include reference tie or witness points, remarks and topo of area)



SURVEYOR'S CERTIFICATE

THIS CORNER RECORD WAS PREPARED BY ME OR UNDER MY DIRECTION IN CONFORMANCE WITH THE LAND SURVEYORS ACT ON JANUARY 1991

SIGNED: W. G. [Signature] 15945  
L.S. or R.C.E. No. 15945



COUNTY SURVEYOR'S CERTIFICATE

THE CORNER RECORD WAS RECEIVED RECEIVED AND EXAMINED AND FILED FILED

BY: [Signature] Exp. 3-31-92

TITLE:       

DOCUMENT No.       

STATEMENT ON BACK OF SHEET YES ☐ NO ☒

(1)

2

(3)