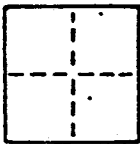


**CORNER RECORD . AP# 10-101-60**

COUNTY OF MARIN T.            R.                       MERIDIAN CALIFORNIA.

CORNER TYPE: GOV'T. CORNER ☐ MEANDER ☐ RANCHO ☐ CONTROL ☐ OTHER ☒

CORNER IDENTIFICATION — DATE OF VISIT NOV 1990



CORNER — LEFT AS FOUND ☐ FOUND AND TAGGED ☐ REESTABLISHED OBLITERATED CORNER ☐ RESULT ☒

PHYSICAL DESCRIPTION OF CORNER FOUND; EVIDENCE AND METHOD USED TO IDENTIFY OR REESTABLISH

**BASIS OF BEARING      FOUND CITY MONUMENTS    AS SHOWN**

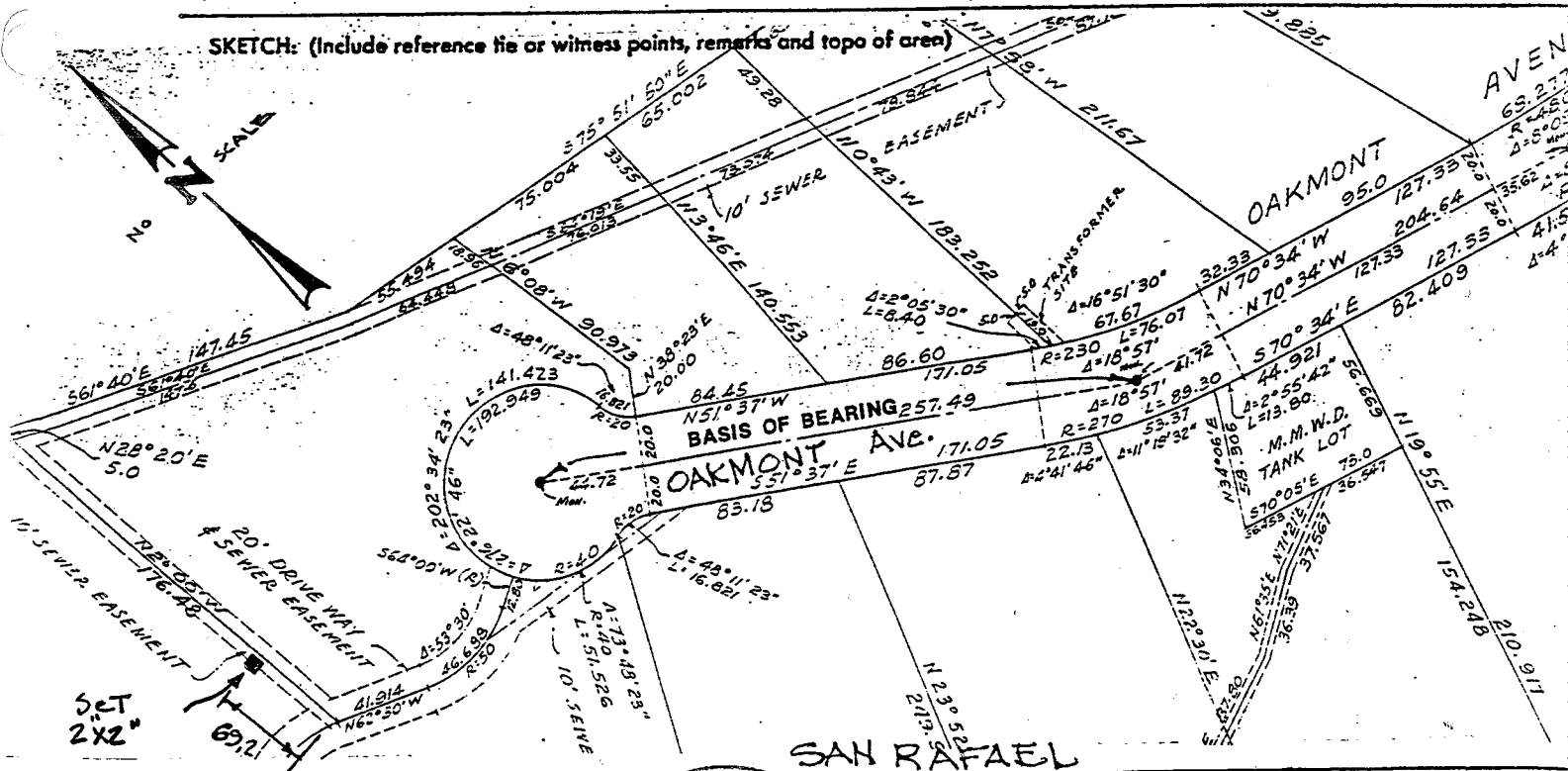
**6 ROS 4**

PHYSICAL DESCRIPTION OF MONUMENTS, REBUILT OR PERPETUATED

SET REDWOOD 2'x2' & TAG RCE#15945

CALIFORNIA COORDINATE SYSTEM ORDER: FIRST ☐ SECOND ☐ THIRD ☐  
STATIONS USED: NGS (USC & GS) ☐ STATE ☐ COUNTY ☐ OTHER ☒ STATION \_\_\_\_\_ STATION \_\_\_\_\_  
ZONE \_\_\_\_\_ ELEVATION \_\_\_\_\_ NORTHINGS (Y) \_\_\_\_\_ EASTINGS (X) \_\_\_\_\_

SKETCH: (Include reference tie or witness points, remarks and topo of area)

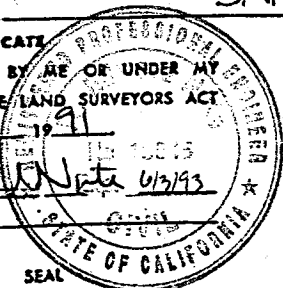


### SURVEYOR'S CERTIFICATE

THIS CORNER RECORD WAS PREPARED BY ME OR UNDER MY  
DIRECTION IN CONFORMANCE WITH THE LAND SURVEYORS ACT  
ON JANUARY 1991

**SIGNED:**

**L.S. or R.C.E. No.:**



**COUNTY SURGEON'S CERTIFICATE**

THE CORNER RECORD WAS RECEIVED... 1991  
AND EXAMINED AND FILED... MARRELL... 1991

BY: \_\_\_\_\_

**TITLE:**

DOCUMENT No.

STATEMENT ON BACK OF SHEET

NC