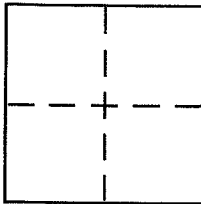


CORNER RECORD

Document Number 10-033-28
City of SAN RAFAEL County of MARIN, California

Brief Legal Description LOT 6, BLOCK 2, SAN RAFAEL HIGHLANDS, 1, 8 RM 19



CORNER TYPE

Government Corner ☐ Control ☐
Meander ☐ Property ☒
Rancho ☐ Other ☐
Date of Survey 9/9/2004

COORDINATES (Optional)

N. _____
E. _____
Zone _____ NAD27 ☐ NAD83 ☐
NAD83 Epoch _____
Elev. _____
Vert. Datum: NGVD29 ☐ NAVD88 ☐
Meas. Units: Metric ☐ Imperial ☐

Corner - Left as found ☐ Found and tagged ☐ Established ☐ Reestablished ☒ Rebuilt ☐

Identification and type of corner found: Evidence used to identify or procedure used to establish or reestablish the corner:

Re-establish the front corners on the southerly
line of RIDGEWOOD DRIVE FOR LOT 6, BLOCK 2, MAP
of RAFAEL HIGHLANDS, Unit 1, 8 RM 19. Points set
from existing street monuments on RIDGEWOOD DRIVE
& per said record map. see sketch on reverse side.

A description of the physical condition of the monument as found and as set or reset:

set 1/2" rebar with PLS CAP 5379 Affixed to
top & driven flush with surrounding grade

SURVEYOR'S STATEMENT

This Corner Record was prepared by me or under my direction in conformance with
the Land Surveyor's Act on October 19, 2004

Signed [Signature] P.L.S or R.C.E. No. 5379/PLS

COUNTY SURVEYOR'S STATEMENT

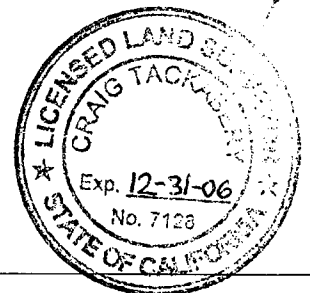
This Corner Record was received OCTOBER 26, 2004

and examined and filed NOVEMBER 17, 2004

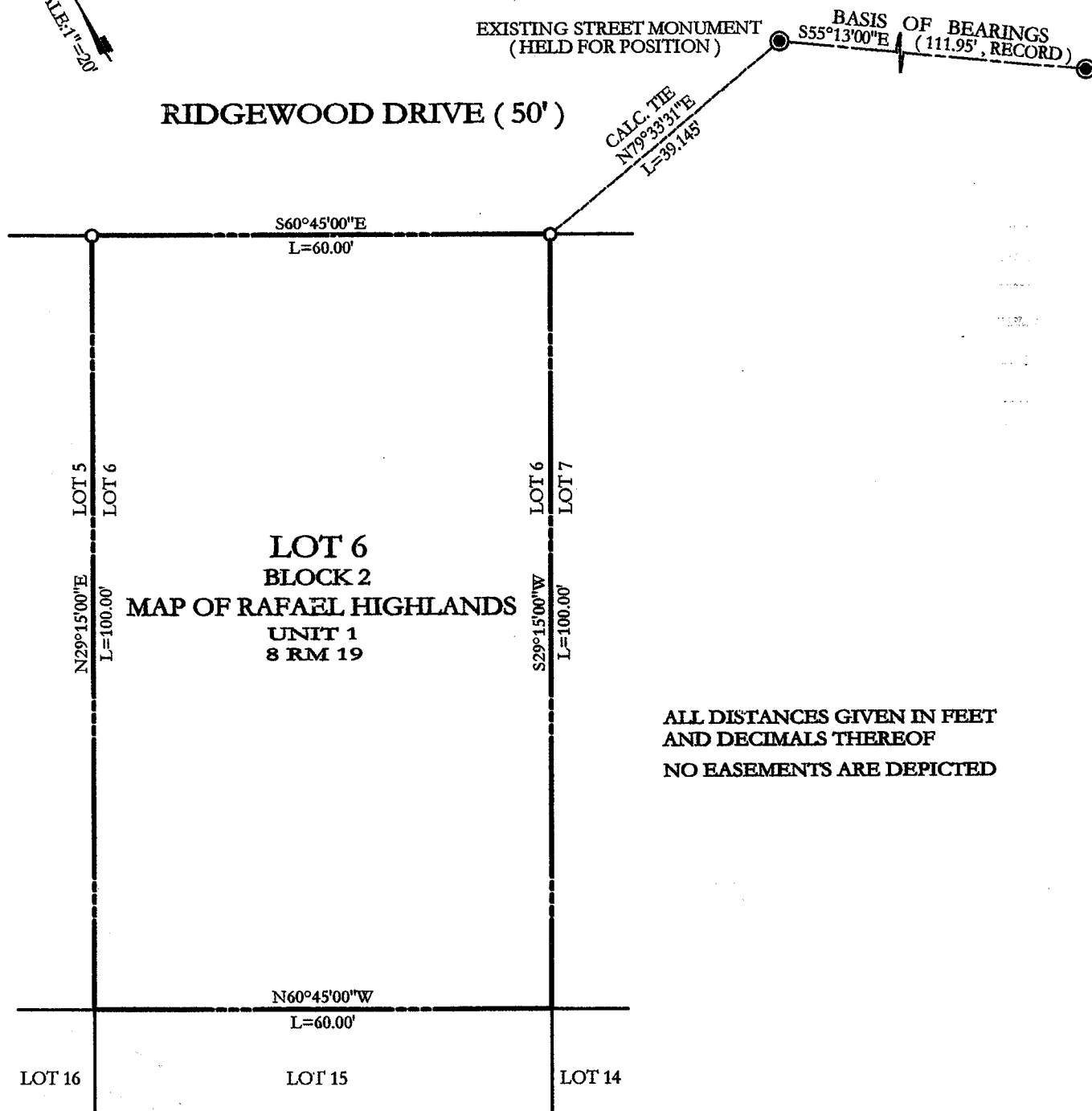
Signed [Signature] P.L.S or R.C.E. No. 7128

Title COUNTY SURVEYOR

County Surveyor's Comment _____



Prepared by
DOUGLAS J. SCRANTON
NOVATO, CA
D.J. SCRANTON SURVEYING



ALL DISTANCES GIVEN IN FEET
AND DECIMALS THEREOF
NO EASEMENTS ARE DEPICTED

LEGEND

○ SET 1/2" REBAR/PLS 5379

BASIS OF BEARINGS

TAKEN AS S55°13'E BETWEEN MONUMENTS
AS SHOWN UPON RIDGEWOOD DRIVE AND
AS SAID MONUMENTS ARE SHOWN UPON 8 RM 19