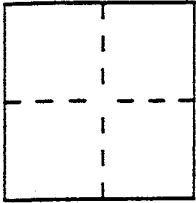


CORNER RECORD

Document Number A.P.N.'s 010-025-02, 04, 25 & 26
City of San Rafael County of Marin, California

Chief Legal Description as shown on 9 RM 13



CORNER TYPE

Government Corner ☐ Control ☐
Meander ☐ Property ☒
Rancho ☐ Other ☐
Date of Survey Oct. 17, 1998

COORDINATES (Optional)

N. _____
E. _____
Zone _____ Datum _____
Elev. _____

Corner — Left as found ☐ Found and tagged ☐ Established ☐ Reestablished ☐ Rebuilt ☐

Identification and type of corner found: Evidence used to identify or procedure used to establish or reestablish the corner:
Found steel pins in well monuments at centerline intersections of
Vistawood Drive and Ridgewood Drive and Vistawood Drive and Crestwood
Drive also a nail and tag LS 2771 at the most southerly corner of Lot
24 as shown on 9 RM 13.

A description of the physical condition of the monument as found and as set or reset: At the most
westerly corner of Lot 26 set lead plug and tag RCE 18221; at the common
westerly corner of lots 25 and 26 set a 3/4" iron pipe and tag RCE 18221;
at the common westerly corner of lots 24 and 25 set a PK nail and tag
RCE 18221 using bearings and distances per 9 RM 13.

SURVEYOR'S STATEMENT

This Corner Record was prepared by me or under my direction in conformance with
the Land Surveyors' Act on OCTOBER 29 19 98

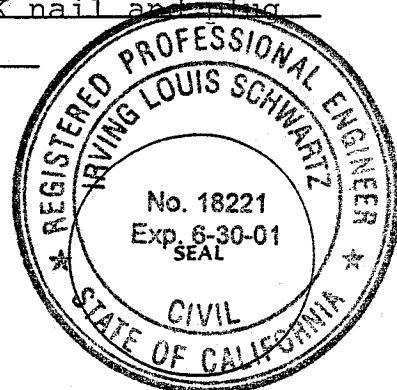
Signed [Signature] L.S. or R.C.E. Number 18221

COUNTY SURVEYOR'S STATEMENT

This Corner Record was received OCTOBER 30 19 98 and examined
and filed OCTOBER 30 19 98.

Signed [Signature] Title DEPUTY

County Surveyor's Comment _____



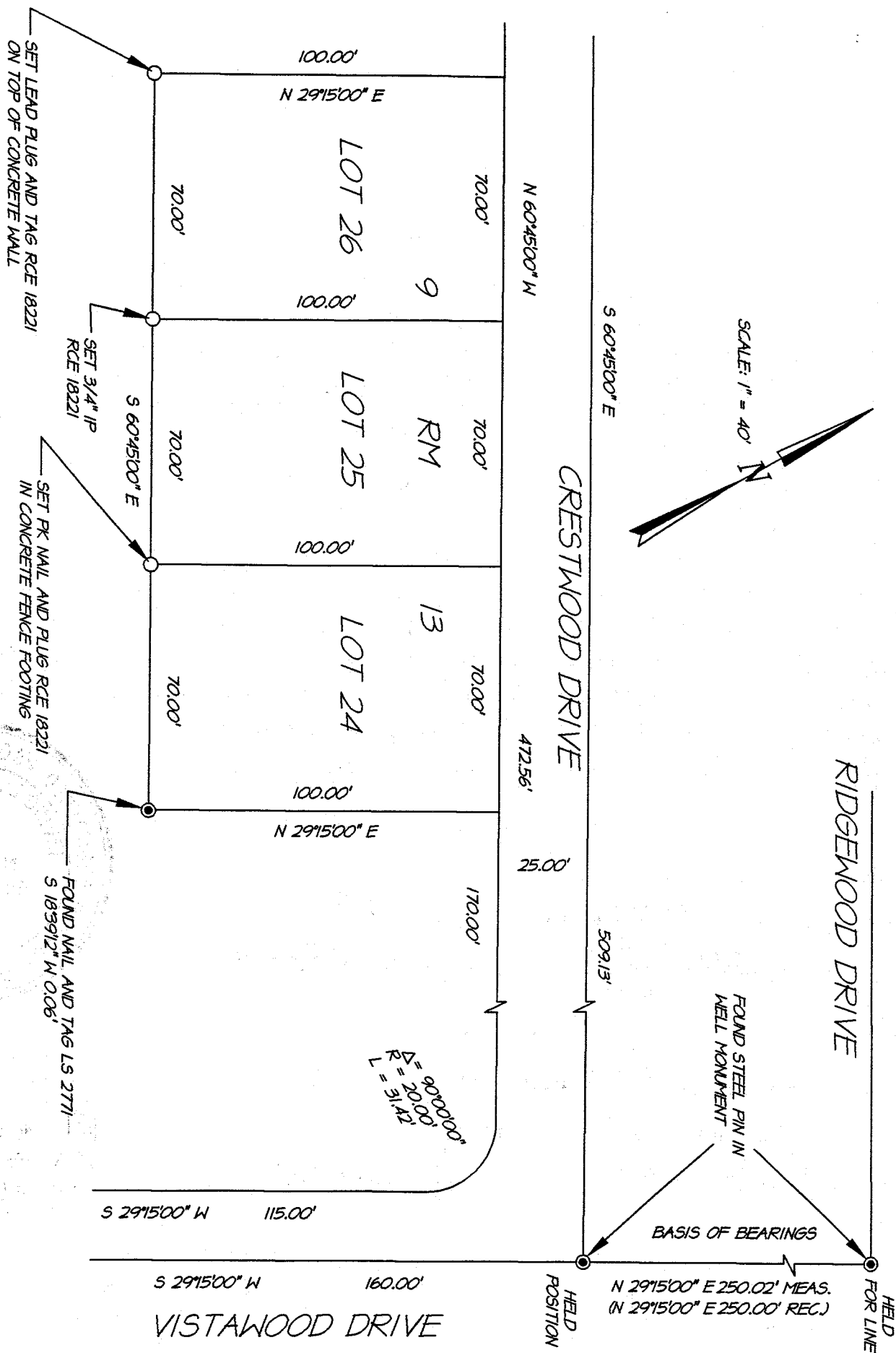


EXHIBIT "A"

I. L. SCHWARTZ ASSOCIATES, INC.
CIVIL ENGINEERING AND LAND SURVEYING
79 GALLI DRIVE, NOVATO, CA 94949 (415) 883-9200