

# CORNER RECORD

Agency Index

DPW #19-011

Assessor Parcel Number

009-291-36

City of SAN RAFAEL

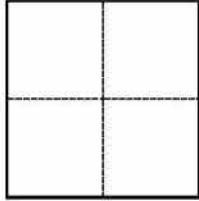
County of MARIN

, California

Brief Legal Description PARCEL 2 OF PARCEL MAP OF PELICAN WAY INDUSTRIAL PARK, PER BOOK 24 MAPS, PAGE 93, MARIN COUNTY RECORDS.

### CORNER TYPE

### COORDINATES (Optional)



- Government Corner
- Meander
- Rancho
- Control
- Property
- Other

Date of Survey 2/12/2019

N. \_\_\_\_\_ E. \_\_\_\_\_

Elevation \_\_\_\_\_

Units  Metric  U.S. Survey Foot

Horizontal Datum \_\_\_\_\_

Zone \_\_\_\_\_ Epoch Date \_\_\_\_\_

Vertical Datum \_\_\_\_\_

Complies with Public Resources Code §§8801-8819

Complies with Public Resources Code §§8890-8902

PLS Act Ref.:  8765(d)  8771  8773  Other: \_\_\_\_\_

Corner/Monument:  Left as found  Established  Rebuilt  Pre-Construction

Found and tagged  Reestablished  Referenced  Post-Construction

Narrative of corner identified and monument as found, set, reset, replaced, or removed:

See sheet #2 for description(s):

ALL MONUMENTS FOUND ARE FROM THE PARCEL MAP OF PELICAN WAY INDUSTRIAL COMPLEX, RECORDED IN BOOK 24 OF MAPS, AT PAGE 93, AND THE MAP OF SHORELINE CENTER, RECORDED IN BOOK 21, OF MAPS, AT PAGE 27, BOTH MARIN COUNTY RECORDS. FIVE 1/2 INCH IRON PIPES TAGGED "KLEIN PLS 8155" WERE SET-ONE AT EACH CORNER OF PARCEL 2. SEE SHEET 2 FOR DETAILS.

### SURVEYOR'S STATEMENT

This Corner Record was prepared by me or under my direction in conformance with  
 the Professional Land Surveyors' Act on 12/21/22  
 Signed *Steven J. Klein* P.L.S. ██████ No. 8155

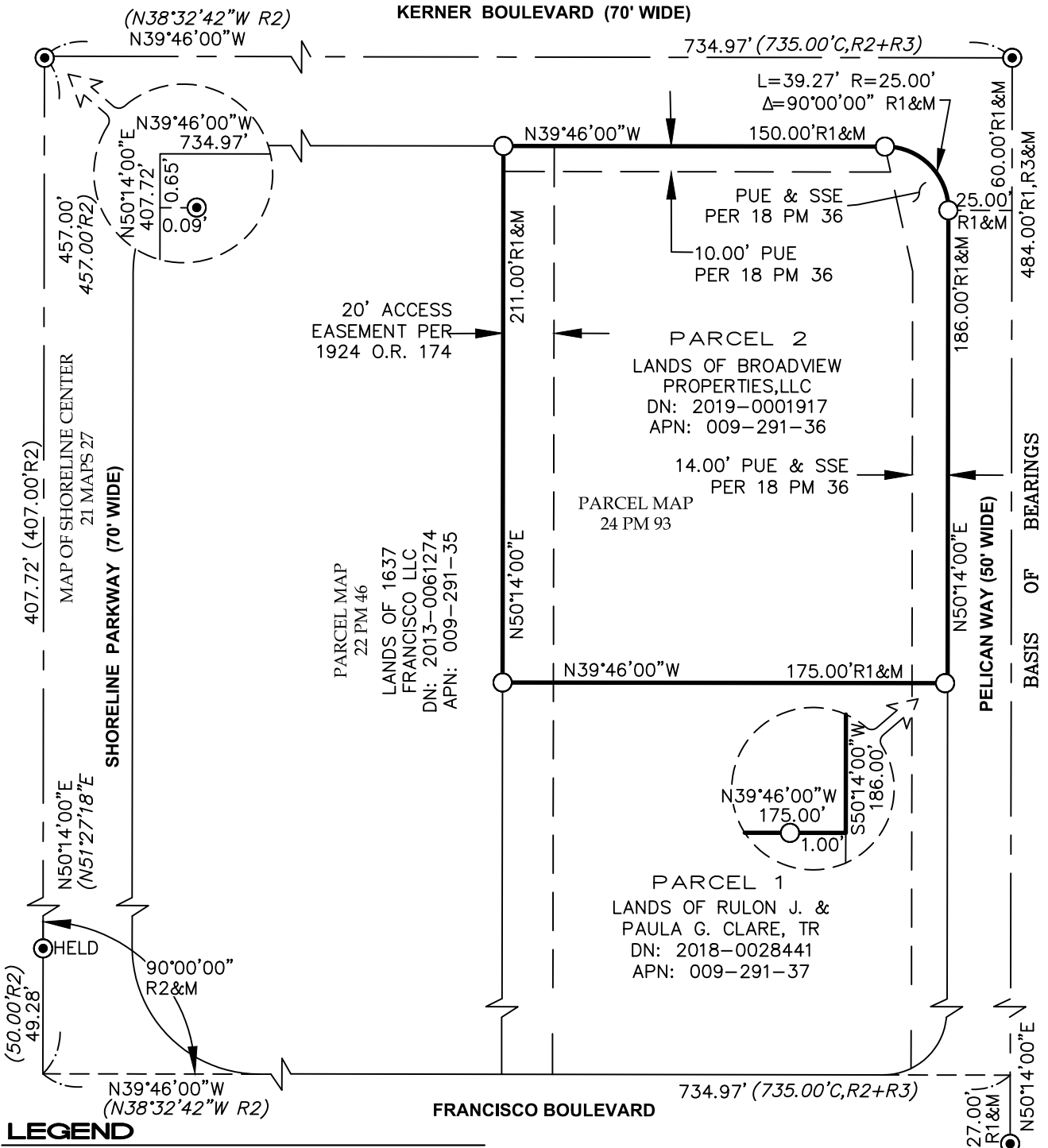


### COUNTY SURVEYOR'S STATEMENT

This Corner Record was received 12/21/2022  
 and examined and filed 12/21/2022  
 Signed *T.W. Park* P.L.S. ██████ No. 8176  
 Title County Surveyor



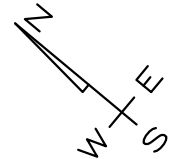
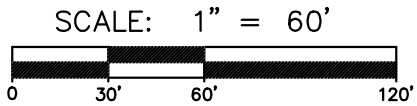
County Surveyor's Comment



**LEGEND**

	BOUNDARY LINE
	ADJOINING BOUNDARY LINE
	SET 1/2" IRON PIPE, TAGGED PLS 8155
	FOUND BRASS DISK W/ PUNCH IN MONUMENT WELL
DN	DOCUMENT NUMBER
R1&M	RECORD AND MEASURED ARE IDENTICAL
R1	PARCEL MAP-24 PM 93, MCR
R2	MAP OF SHORELINE CENTER 21 MAPS 27, MCR

R3	RECORD OF SURVEY-23 RS 27, MCR
C	CALCULATED
PUE	PUBLIC UTILITY EASEMENT
SSE	SANITARY SEWER EASEMENT



**DVC GROUP**  
CML ENGINEERING ♦ LAND PLANNING