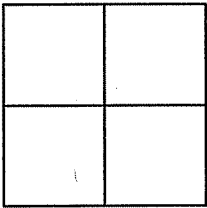


CORNER RECORD

Document Number APN 009-090

City of San Rafael County of Marin, California

Brief Legal Description Perpetuate & Re-Establish the Standard City Street Monument of Plymouth Cove per 17 R.M. 80; Marin County Records



CORNER TYPE

Government Corner Control
Meander Property
Rancho Other
Date of Survey 12/10/08 & 5/28/09

COORDINATES (Optional)

N. _____
E. _____
Zone _____ NAD27 NAD83
NAD83 Epoch _____
Elev. _____
Vert. Datum: NGVD29 NAVD88
Meas. Units: Metric Imperial
US Survey Feet

Corner - Left as found Found and tagged Established Reestablished Rebuilt

Identification and type of corner found: Evidence used to identify or procedure used to establish or reestablish the corner:
The street monument of Plymouth Cove was located to perpetuate its position prior to sewer line construction and to re-establish its position. No attempt was made to determine the validity of the monument or its proper location in relation to legal boundary lines in the area.

A description and the physical condition of the monument as found and as set or reset:
The existing brass disk set flush with the concrete in the center of Plymouth Cove was found in good condition prior to construction. After construction it was re-established and rebuilt with a 3" Aluminum Disk punched & Stamped "PLS 8118" "Replaced by Corner Record"

SURVEYOR'S STATEMENT

This Corner Record was prepared by me or under my direction in conformance with the Land Surveyor's Act on May 28, 2009
Signed Randall T. Willis P.L.S. or R.C.E. No. PLS 8118



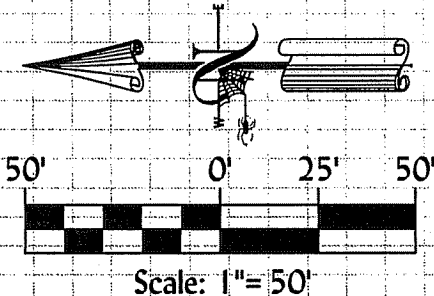
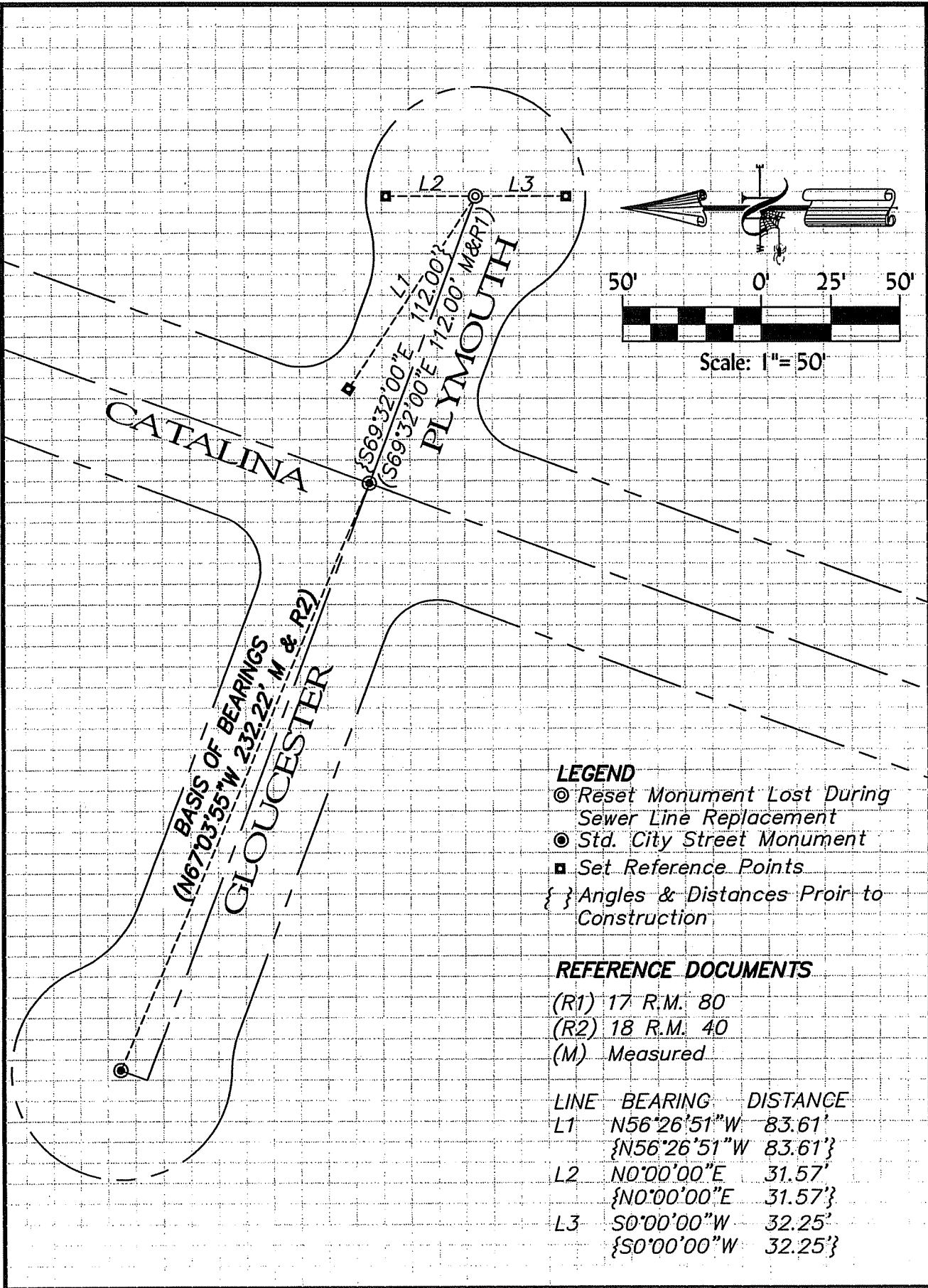
COUNTY SURVEYOR'S STATEMENT

This Corner Record was received June 12, 2009
and examined and filed July 16, 2009
Signed [Signature] P.L.S. or R.C.E. No. 7128
Title COUNTY SURVEYOR



County Surveyor's Comment _____

10/13/09 10:00 AM 10/13/09 10:00 AM 10/13/09 10:00 AM



- LEGEND**
- ⊙ Reset Monument Lost During Sewer Line Replacement
 - Std. City Street Monument
 - Set Reference Points
 - { } Angles & Distances Proir to Construction

REFERENCE DOCUMENTS

- (R1) 17 R.M. 80
- (R2) 18 R.M. 40
- (M) Measured

| LINE | BEARING | DISTANCE |
|------|--------------|----------|
| L1 | N56°26'51"W | 83.61' |
| | {N56°26'51"W | 83.61'} |
| L2 | N0°00'00"E | 31.57' |
| | {N0°00'00"E | 31.57'} |
| L3 | S0°00'00"W | 32.25' |
| | {S0°00'00"W | 32.25'} |