

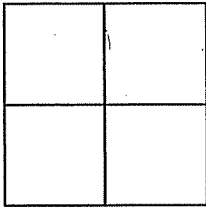
# CORNER RECORD

Document Number APN 009-090

City of San Rafael

County of Marin, California

Brief Legal Description Perpetuate & Re-Establish the City Street Monument in the intersection of Catalina Blvd. & Hyannis Cove per 17 R.M. 80; Marin County Records



### CORNER TYPE

Government Corner  Control   
 Meander  Property   
 Rancho  Other   
 Date of Survey 12/10/08 & 5/28/09

### COORDINATES (Optional)

N. \_\_\_\_\_  
 E. \_\_\_\_\_  
 Zone \_\_\_\_\_ NAD27  NAD83   
 NAD83 Epoch \_\_\_\_\_  
 Elev. \_\_\_\_\_  
 Vert. Datum: NGVD29  NAVD88   
 Meas. Units: Metric  Imperial   
 US Survey Feet

Corner - Left as found  Found and tagged  Established  Reestablished  Rebuilt

Identification and type of corner found: Evidence used to identify or procedure used to establish or reestablish the corner:

The City Street Monument in the intersection of Catalina Blvd. & Hyannis Cove was located to perpetuate its position prior to sewer line construction and to re-establish its position. No attempt was made to determine the validity of the monument or its proper location in relation to legal boundary lines in the area.

A description and the physical condition of the monument as found and as set or reset:

The existing brass disk in a Standard City Street Monument well in the intersection of Catalina Blvd. & Hyannis Cove was found in good condition prior to construction. After construction it was re-established and rebuilt with a 3" Aluminum Disk punched & Stamped "PLS 8118" "Replaced by Corner Record"

### SURVEYOR'S STATEMENT

This Corner Record was prepared by me or under my direction in conformance with the Land Surveyor's Act on May 28, 2009

Signed Randall T. Willis P.L.S. or R.C.E. No. PLS 8118



### COUNTY SURVEYOR'S STATEMENT

This Corner Record was received June 12, 2009

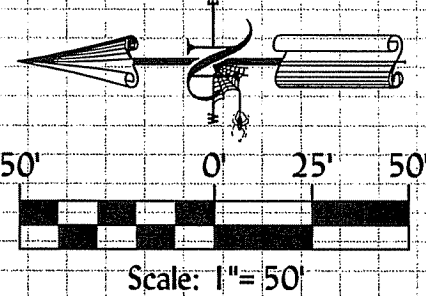
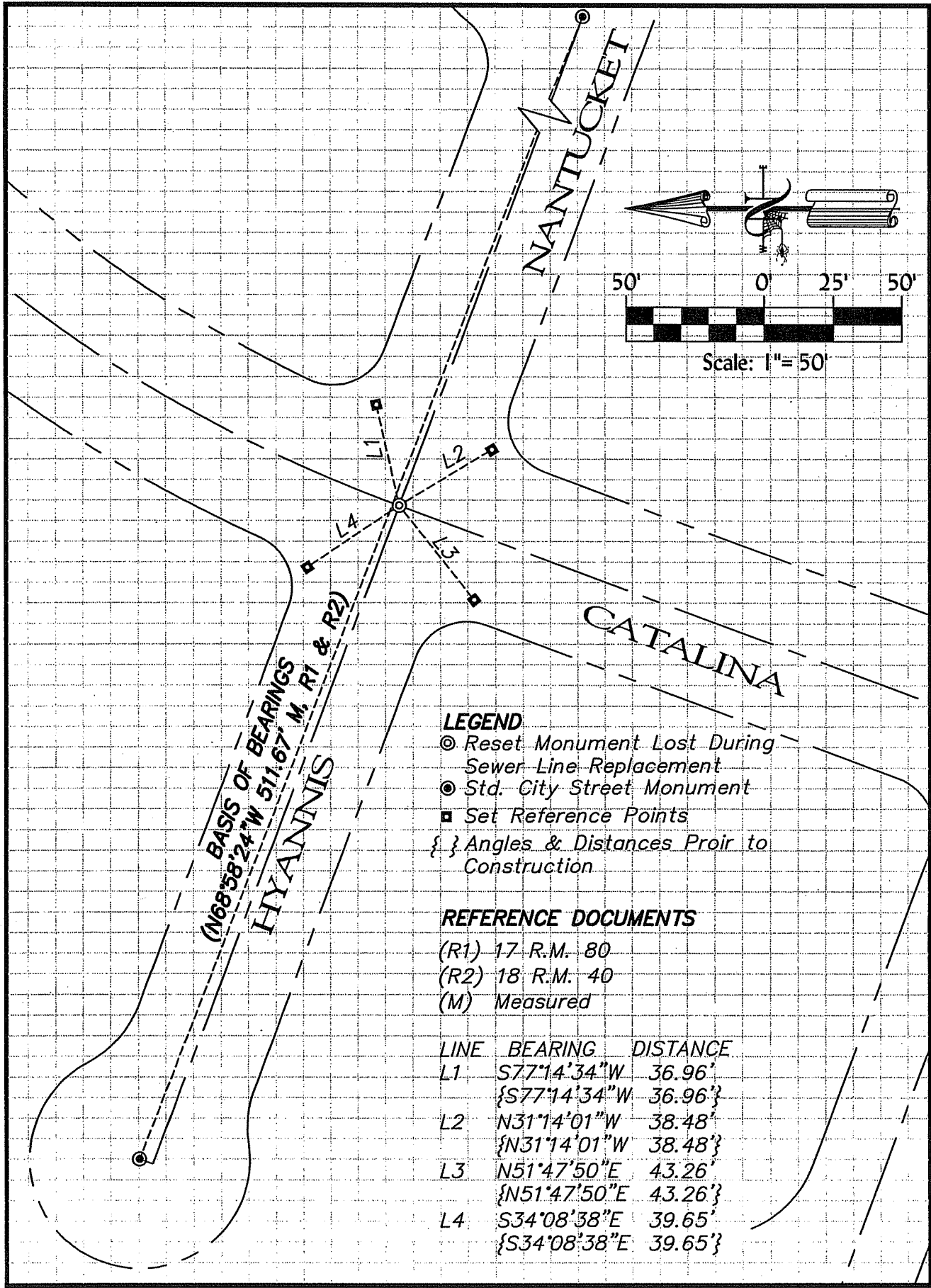
and examined and filed July 16, 2009

Signed \_\_\_\_\_ P.L.S. or R.C.E. No. 7128

Title COUNTY SURVEYOR



County Surveyor's Comment \_\_\_\_\_



(N68°58'24"W 511.67' M, R1 & R2)  
 HYANNIS

- LEGEND**
- ⊙ Reset Monument Lost During Sewer Line Replacement
  - ⊙ Std. City Street Monument
  - Set Reference Points
  - { } Angles & Distances Proir to Construction

- REFERENCE DOCUMENTS**
- (R1) 17 R.M. 80
  - (R2) 18 R.M. 40
  - (M) Measured

LINE	BEARING	DISTANCE
L1	S77°14'34"W	36.96'
	{S77°14'34"W	36.96'}
L2	N31°14'01"W	38.48'
	{N31°14'01"W	38.48'}
L3	N51°47'50"E	43.26'
	{N51°47'50"E	43.26'}
L4	S34°08'38"E	39.65'
	{S34°08'38"E	39.65'}