

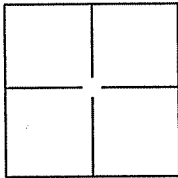
CORNER RECORD

Document Number A.P.N. 195-041-25

City of Stinson Beach

County of Marin, California

Brief Legal Description Lot 74, Map of Seadrift Lagoon, Subdivision No. One, 10 RM 95.



CORNER TYPE

Government Corner Control
 Meander Property
 Rancho Other

Date of Survey 16 July 2009

COORDINATES(Optional)

N. _____
 E. _____
 Zone _____ NAD27 NAD83
 NAD83 Epoch _____
 Elev. _____
 Vert. Datum: NGVD29 NADV88
 Meas. Units: Metric Imperial

Corner - Left as found Found and tagged Established Reestablished Rebuilt

Identification and type of corner found: Evidence used to identify or procedure used to establish or reestablish the corner:

Found Standard Street Monuments (2) per 10 RM 95.

Found 3/4" Iron Pipe and Yellow Cap (2), LS 6330 at SW and SE corner.

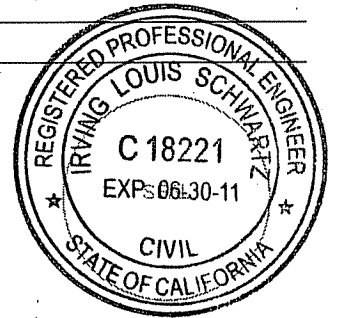
A description of the physical condition of the monument as found and as set or reset: _____

Set Iron Pipe and Yellow Cap (1) on easterly line and Brass Nail and Tag in Fence (1) on westerly line, Lot 74, 10 RM 95, See Exhibit "A".

SURVEYOR'S STATEMENT

This Corner Record was prepared by me or under my direction in conformance with the Land Surveyor's Act on JULY 23, 2009

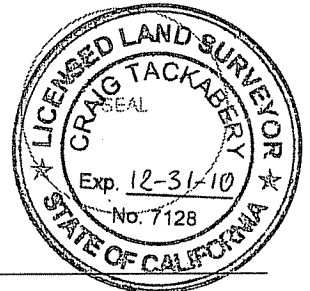
Signed [Signature] P.L.S. of R.C.E. No.: 18221



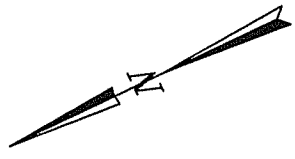
COUNTY SURVEYOR'S STATEMENT

This Corner Record was received JULY 27, 2009 and examined and filed AUGUST 26, 2009.

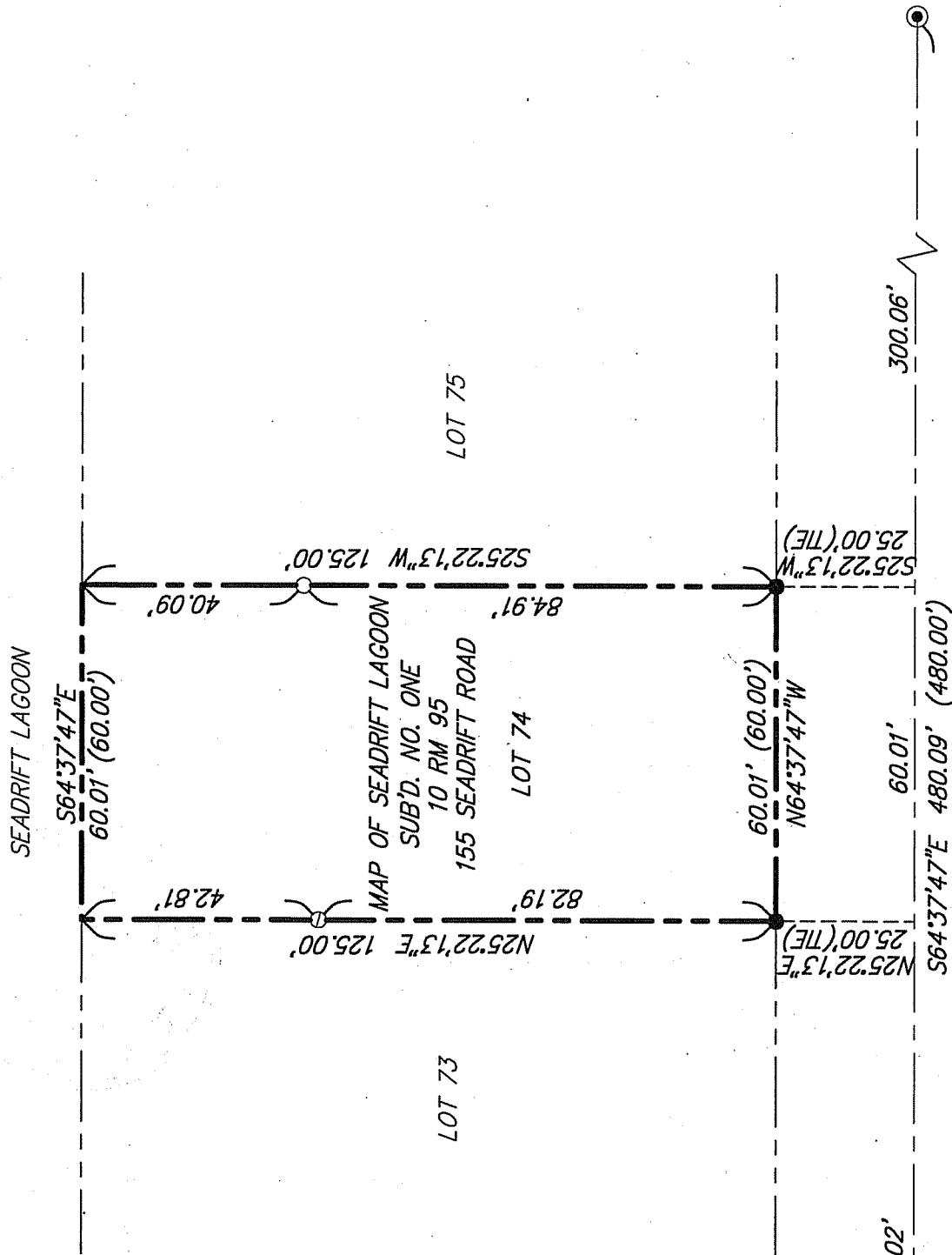
Signed [Signature] P.L.S. of R.C.E. No.: 7128
 Title COUNTY SURVEYOR



County Surveyor's Comment _____



SCALE: 1"=30'



LEGEND

- SET IRON PIPE & YELLOW CAP "R.C.E. 18221"
- POINT ON PROPERTY LINE
- SET BRASS NAIL AND TAG IN FENCE "R.C.E. 18221"
- POINT ON PROPERTY LINE
- FOUND 3/4" IRON PIPE AND YELLOW CAP, LS 6330 PER CORNER RECORD APN 095-041-25 BY R.M. DAVIS & ASSOCIATES LAND SURVEYORS 10/21/04
- FOUND STANDARD STREET MONUMENT PER 10 RM 95
- () RECORD DATA

NOTE:

ALL DIMENSIONS AND BEARINGS SHOWN HEREON ARE PER 10 RM 95 AND CORNER RECORD APN 195-041-25 BY R.M. DAVIS & ASSOCIATES LAND SURVEYORS 10/21/04.



ILS ASSOCIATES, INC.®
 CIVIL ENGINEERING AND LAND SURVEYING

70 GALLI DRIVE, SUITE A, NOVATO, CA 94948-5777 (415) 885-6200 FAX (415) 885-2768

EXHIBIT "A"

FILE: N:\P8000\18382\dwg\18382CR.dwg A.P.N. 195-041-25

DATE: 07/20/2009