

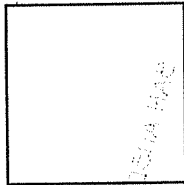
CORNER RECORD

APN 007-301-18, 19 & 20

Document No 3 PM 28

City of San Anselmo County of Marin, California

Brief Legal Description Parcel "A" and "B", 3 PM 28



CORNER TYPE

COORDINATES (Optional)

Government Corner Control
Meander Property
Rancho Other
Date of Survey August 15, 2008

N. _____
E. _____
Zone _____ Datum _____
Elev. _____

Corner- Left as found Found and tagged Established Reestablished Rebuilt

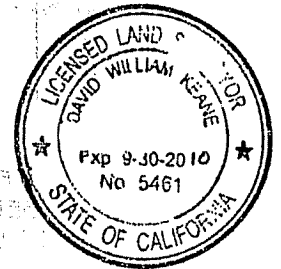
Identification and type of corner found: Evidence used to identify or procedure to establish or reestablish the corner: Established property corners on Parcel "A" & "B", 3 PM 28, per found monuments as shown on herein sht. 2.

A description of the physical condition of the monument as found and as set or reset: Set monuments at locations shown on herein sheet 2. Found monuments, shown on herein sheet 2.

SURVEYOR'S STATEMENT

This Corner Record was prepared by me or under my direction in conformance with the Land Surveyors Act on August 25, 2008.

Signed David W. Keane PLS Number 5461

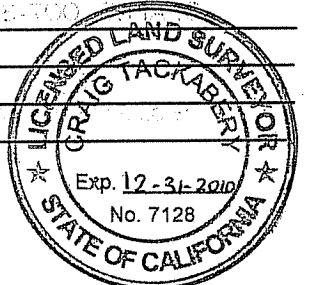


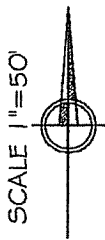
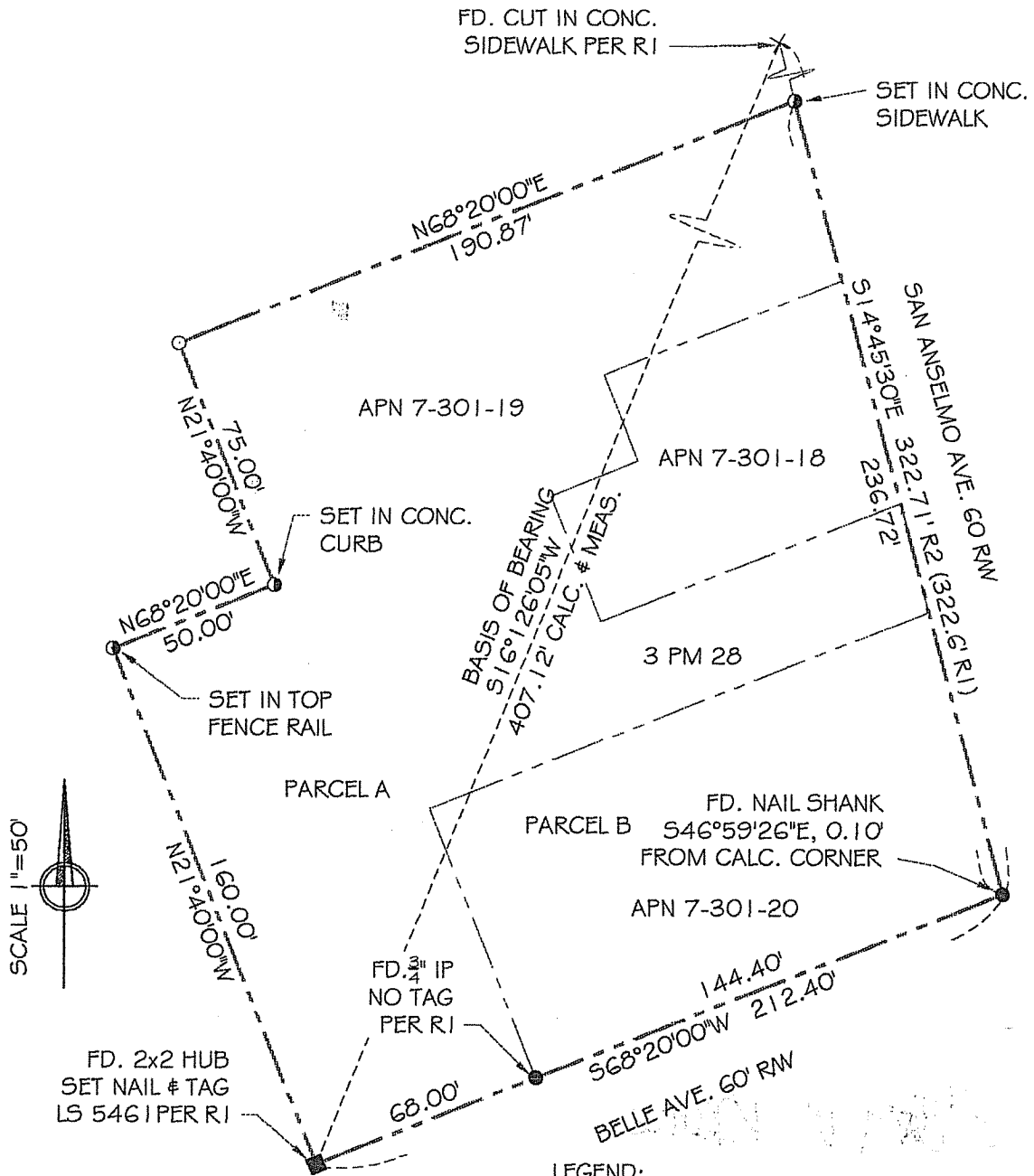
COUNTY SURVEYOR'S STATEMENT

This Corner Record was received AUGUST 27, 2008 and examined and filed DECEMBER 17, 2008.

Signed _____ Title COUNTY SURVEYOR

County Surveyor's Comments _____





NOTE:

1. ALL DIMENSIONS SHOWN HEREIN ARE PER 3 PM 28 UNLESS OTHERWISE NOTED.
2. ALL DISTANCES AND DIMENSIONS ARE IN FEET AND DECIMALS THEREOF.
3. APNS. 007-301-18, 19 & 20

LEGEND:

- SET 1/2" IRON PIPE W/ PL. CAP LS 546 I
- SET NAIL & TAG LS 546 I
- FD. MONUMENT AS SHOWN
- R1 3 PM 28
- R2 32 RS 65

EXHIBIT "A"

DAVID KEANE
Professional Land Surveyors

08-08-24 DATE: 8 / 25 / 08

SHEET 2 OF 2

tel: (415) 927-8801 fax: (415) 927-8802
5710 Paradise Drive, Ste. 8
Corte Madera, CA 94925