



JERRICO ASSOCIATES
 SUITE 27
 77 MARK DRIVE
 SAN RAFAEL, CA 94903

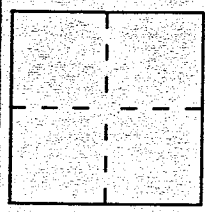
7270

CORNER RECORD

Document Number A.P. 7-273-01

City of San Anselmo County of Marin, California

Brief Legal Description 2112 OR 189 per 6 OS 92 (Westerly line only) this job.



CORNER TYPE

Government Corner Control
 Meander Property
 Rancho Other
 Date of Survey Aug. 21, 1997

COORDINATES (Optional)

N. _____
 E. _____
 Zone _____ Datum _____
 Elev. _____

Corner — Left as found Found and tagged Established Reestablished Rebuilt

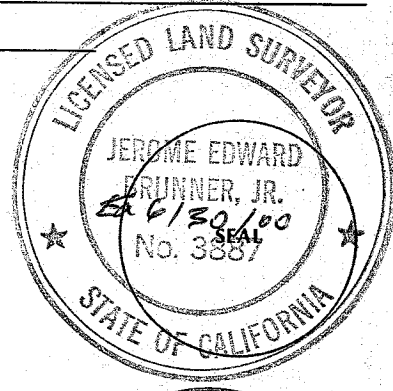
Identification and type of corner found: Evidence used to identify or procedure used to establish or reestablish the corner:
(A) Found nail and tag RCE 11181 on RdWd BlkHd per 6 OS 92. (B) Found hub (deteriorated - tag gone (Nute)), per 6 OS 92, at South/Easterly corner.

A description of the physical condition of the monument as found and as set or reset: (C) Set nail and tag LS 3887, in asphalt area.

SURVEYOR'S STATEMENT

This Corner Record was prepared by me or under my direction in conformance with the Land Surveyors' Act on August 21 1997.

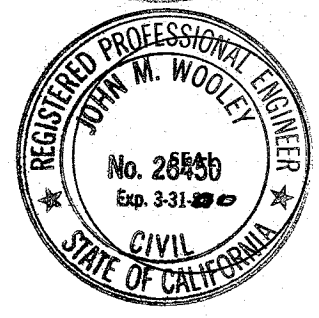
Signed J.E. Brunner L.S. or R.C.E. Number LS 3887



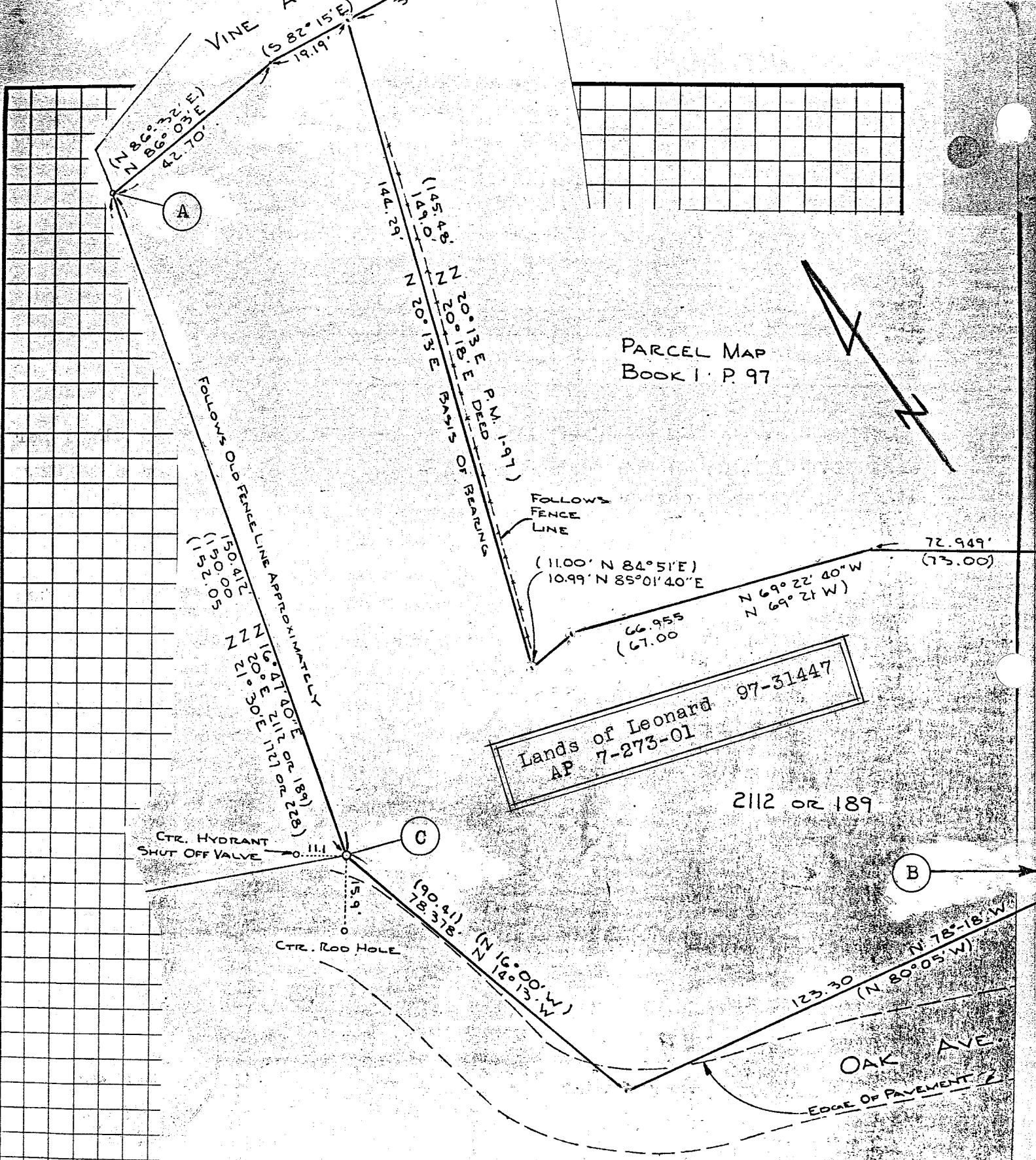
COUNTY SURVEYOR'S STATEMENT

This Corner Record was received September 9 1997 and examined and filed September 9 1997.

Signed John M. Wooley Title Deputy



County Surveyor's Comment _____



PARCEL MAP
BOOK 1 P. 97

Lands of Leonard 97-31447
AP 7-273-01

2112 OR 189

OAK AVE.
EDGE OF PAVEMENT

25272

25272

RECORDER'S CERTIFICATE

Filed for record this 28 day of SEPT.
1967, at 8:25 A.M. in Book 6 of SURVEYS
at page 92, at the request of DEPT. Public

WORKS (Signed) N.T. GIACOMINI
County Recorder H. Crumpley
Deputy

Fee
5.00

RECORD OF SURVEY

PORTION OF LOT 2, ROSENT
TRACT BEING SUDIVISION 3
SUNNYSIDE TRACT