

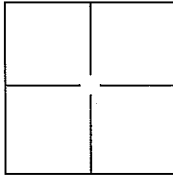
# CORNER RECORD

Document Number A.P.N. 007-271-21

City of San Anselmo

County of Marin, California

Brief Legal Description Lands of Schneider, 100 Chipman Place, DN 2011-0024610.



### CORNER TYPE

Government Corner  Control   
 Meander  Property   
 Rancho  Other

Date of Survey 24 January 2013

### COORDINATES(Optional)

N. \_\_\_\_\_  
 E. \_\_\_\_\_  
 Zone \_\_\_\_\_ NAD27  NAD83   
 NAD83 Epoch \_\_\_\_\_  
 Elev. \_\_\_\_\_  
 Vert. Datum: NGVD29  NADV88   
 Meas. Units: Metric  Imperial

Corner - Left as found  Found and tagged  Established  Reestablished  Rebuilt

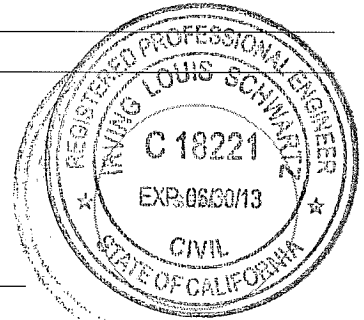
Identification and type of corner found: Evidence used to identify or procedure used to establish or reestablish the corner:  
Found 1/2" Rebar and Yellow Cap and Tag L.S. 3887 (2) and Found 3/4" Iron Pipe and Yellow Cap and Tag L.S. 3775 per 29 OS 30.

A description of the physical condition of the monument as found and as set or reset: Set NW corner, See Exhibit "A".

### SURVEYOR'S STATEMENT

This Corner Record was prepared by me or under my direction in conformance with the Land Surveyor's Act on JANUARY 28, 2013.

Signed [Signature] P.L.S. or R.C.E. No.: 18221



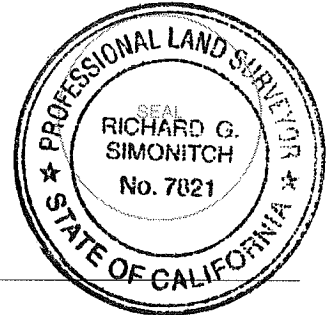
### COUNTY SURVEYOR'S STATEMENT

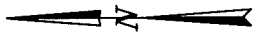
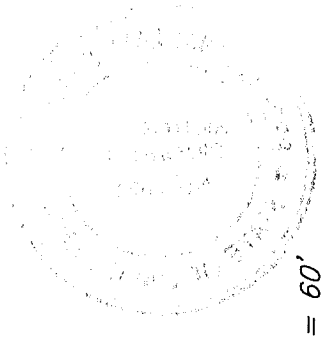
This Corner Record was received JANUARY 29, 2013 and examined and filed MARCH 11, 2013

Signed [Signature] P.L.S. or R.C.E. No.: 7821

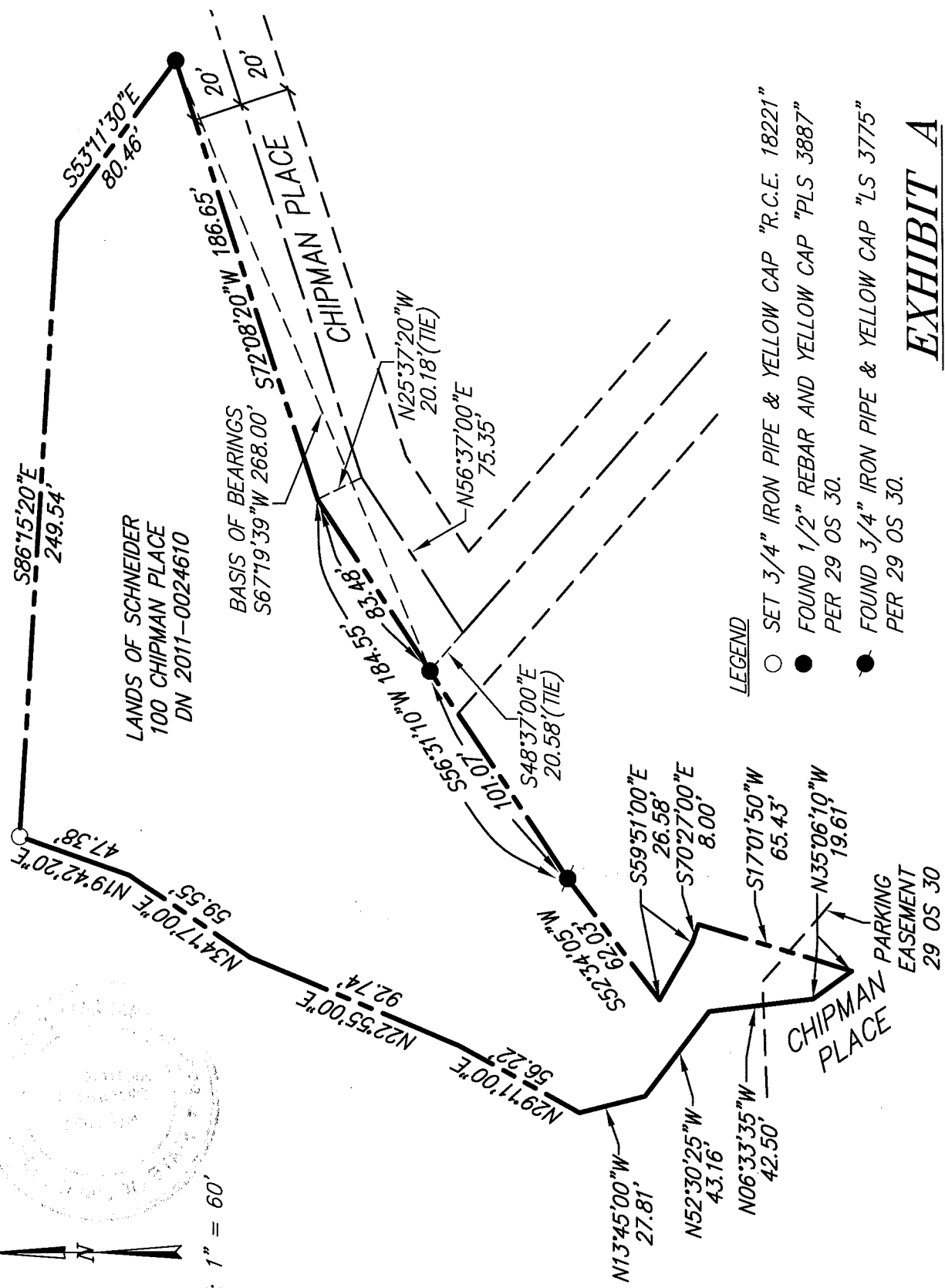
Title DEPUTY COUNTY SURVEYOR

County Surveyor's Comment \_\_\_\_\_





SCALE: 1" = 60'



**LEGEND**

- SET 3/4" IRON PIPE & YELLOW CAP "R.C.E. 18221"
- FOUND 1/2" REBAR AND YELLOW CAP "PLS 3887" PER 29 OS 30.
- FOUND 3/4" IRON PIPE & YELLOW CAP "LS 3775" PER 29 OS 30.

**EXHIBIT A**



**ILS ASSOCIATES, INC.®**  
 CIVIL ENGINEERING AND LAND SURVEYING

79 GALLI DRIVE, SUITE A, NOVATO, CA 94948-9177 (415) 883-4600 FAX (415) 883-4700

**NOTE:**  
 ALL DIMENSIONS AND BEARINGS  
 SHOWN HEREON ARE PER 29 OS 30.

DATE: 01/25/2013  
 FILE: 8683CR.dwg  
 PAGE 2 OF 2

A.P.N. 007-271-21