

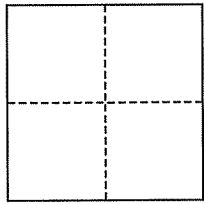
**CORNER RECORD**

Document Number AP# 007-241-54

City of San Anselmo

County of Marin, California

Brief Legal Description I.N. 2009-069278 as shown upon 2003 RS 150



**CORNER TYPE**

Government Corner  Control   
Meander  Property   
Rancho  Other   
Date of Survey June 7, 2010

**COORDINATES (Optional)**

N. \_\_\_\_\_  
E. \_\_\_\_\_  
Zone \_\_\_\_\_ NAD27  NAD83   
NAD83 Epoch \_\_\_\_\_  
Elev. \_\_\_\_\_  
Vert. Datum: NGVD29  NAVD88   
Meas. Units: Metric  Imperial

**Corner-** Left as found  Found and tagged  Established  Reestablished  Rebuilt

Identification and type of corner found: Evidence used to identify or procedure used to establish or reestablish the corner:  
Found survey monuments as shown on 2003 RS 150, and shown upon this Corner Record.

A description of the physical condition of the monument as found and as set or reset: All found points were undisturbed and as shown on 2003 RS 150; additional line points were set as shown on this Corner Record.

**SURVEYOR'S STATEMENT**

This corner Record was prepared by me or under my direction in conformance with the Land Surveyor's Act on July 31, 2010

Signed [Signature] P.L.S. or R.C.E. No. 30465



**COUNTY SURVEYOR'S STATEMENT**

This Corner Record was received AUGUST 2, 2010 and examined and filed AUGUST 5, 2010

Signed [Signature] P.L.S. or R.C.E. No. 7128

Title COUNTY SURVEYOR



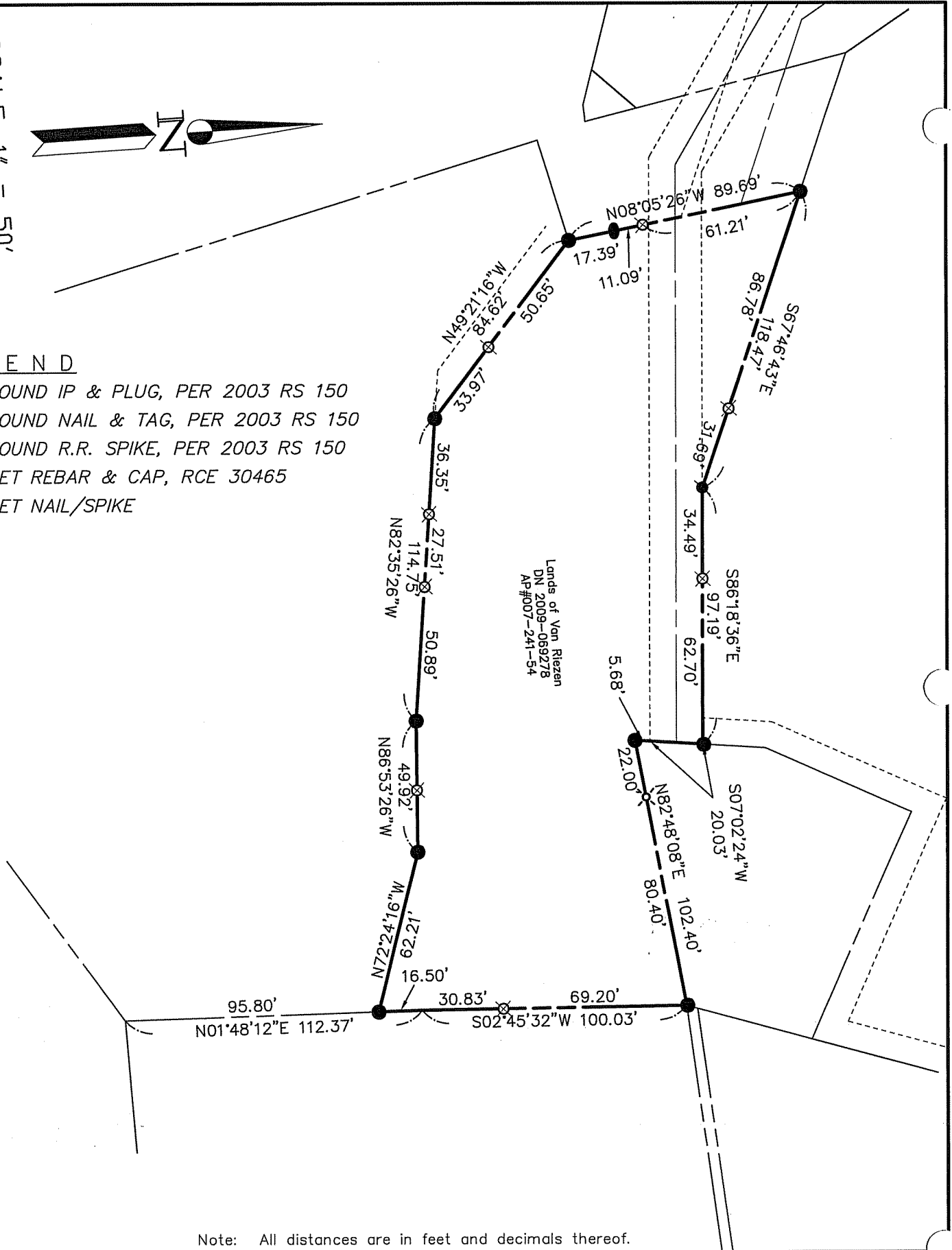
**County Surveyor's Comment** \_\_\_\_\_

SCALE: 1" = 50'



**LEGEND**

- FOUND IP & PLUG, PER 2003 RS 150
- FOUND NAIL & TAG, PER 2003 RS 150
- FOUND R.R. SPIKE, PER 2003 RS 150
- ⊗ SET REBAR & CAP, RCE 30465
- ⊗ SET NAIL/SPIKE



Lands of Van Riezen  
DN 2009-069278  
AP#007-241-54

Note: All distances are in feet and decimals thereof.

SHEET	1	OF	1
SCALE:	1" = 50'	DESIGN:	PR
DATE:	Jun 2010	DRAWN:	PR
FILE:	2010-052	CHECKED:	J.L.H
2010-052\DWG\10-052-BASE,COR-REC			

**J.L. ENGINEERING**  
CIVIL ENGINEERS-LAND SURVEYORS  
1539 4th ST., SAN RAFAEL, CA. 94901 (415) 457-6647

**Corner Record**  
Lands of Van Riezen - 89 S. Oak Rd.  
APN 007-241-54, San Anselmo, Marin County, CA