

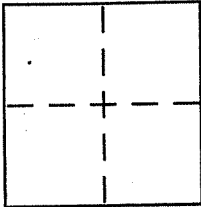
CORNER RECORD

Document Number 007-241-48

City of SAN ANSELMO

County of MARIN, California

Brief Legal Description BEING A PORTION OF THE CITY OF SAN ANSELMO 70.S.40



CORNER TYPE

Government Corner Control
Meander Property
Rancho Other
Date of Survey _____

COORDINATES (Optional)

N. _____
E. _____
Zone _____ NAD27 NAD83
NAD83 Epoch _____
Elev. _____
Vert. Datum: NGVD29 NAVD88
Meas. Units: Metric Imperial

Corner - Left as found Found and tagged Established Reestablished Rebuilt

Identification and type of corner found: Evidence used to identify or procedure used to establish or reestablish the corner:

SEE PAGE 2 OF 2.

A description of the physical condition of the monument as found and as set or reset:

SEE PAGE 2 OF 2

SURVEYOR'S STATEMENT

This Corner Record was prepared by me or under my direction in conformance with the Land Surveyor's Act on 12/11/06

Signed [Signature] P.L.S or R.C.E. No. 6784



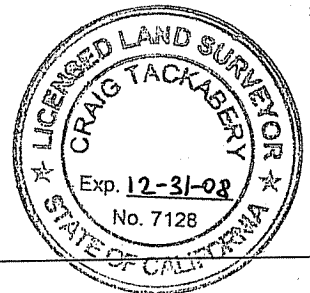
COUNTY SURVEYOR'S STATEMENT

This Corner Record was received DECEMBER 13, 2006

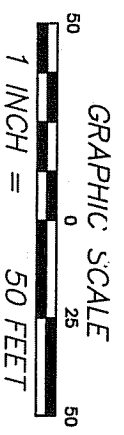
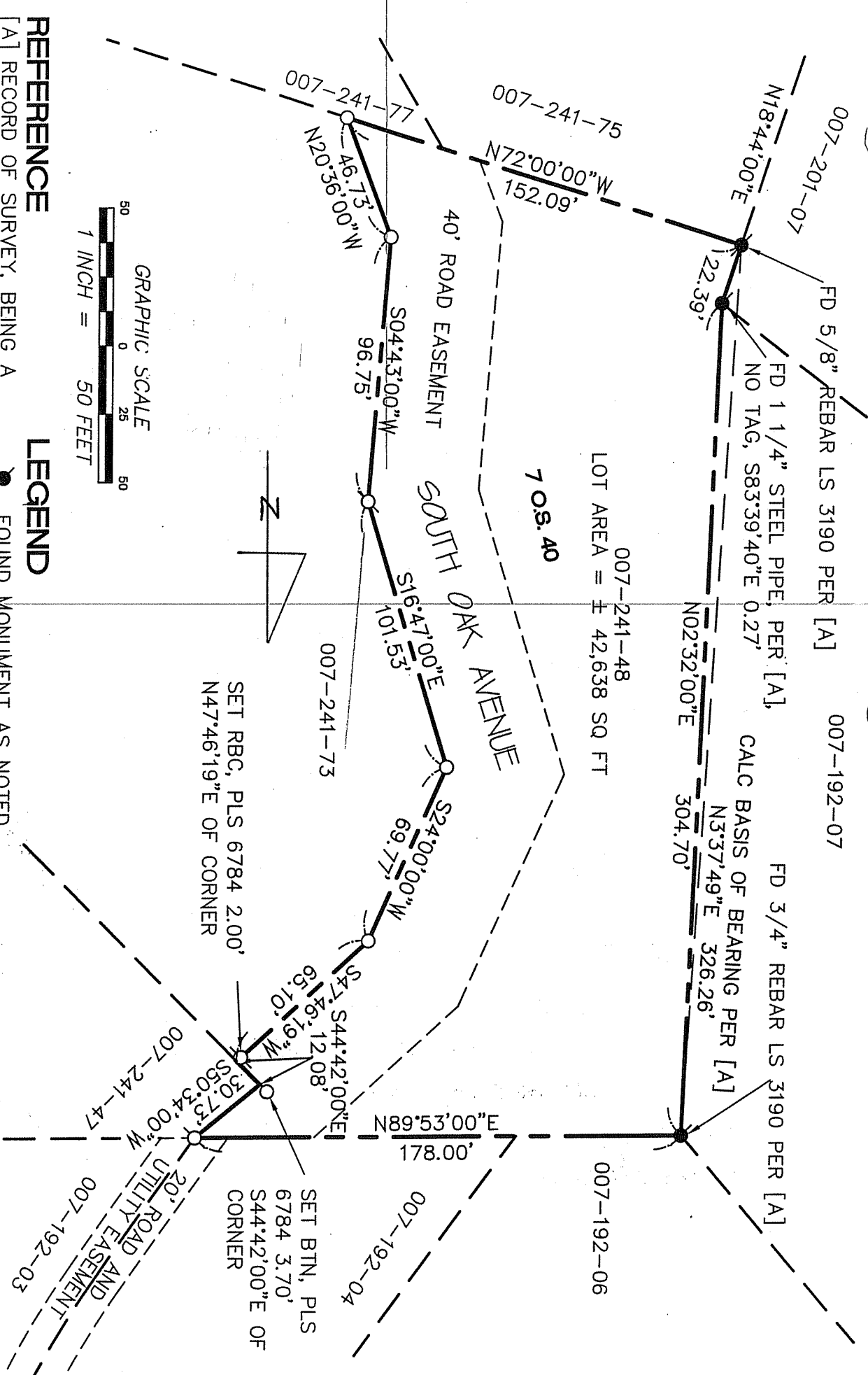
and examined and filed JANUARY 16, 2007

Signed [Signature] P.L.S or R.C.E. No. 7128

Title COUNTY SURVEYOR



County Surveyor's Comment _____



REFERENCE

[A] RECORD OF SURVEY, BEING A PORTION OF THE CITY OF SAN ANSELMO, FILED FOR RECORD JUNE 6, 1968 IN VOLUME 7 OF SURVEYS, AT PAGE 40, MARIN COUNTY RECORDS.

LEGEND

- FOUND MONUMENT AS NOTED
- SET BRASS TAG & NAIL (BTN) PLS 6784
- SET 5/8" REBAR WITH CAP, PLS 6784

NOTE
RECORD=MEASURED

CORNER RECORD

MERIDIAN SURVEYING ENGINEERING, INC.

1812 UNION STREET
SAN FRANCISCO, CA 94123
(415) 440-4131

777 GRAND AVENUE, SUITE 202
SAN RAFAEL, CA 94901
(415) 456-6450

06164
info@meridiansurvey.com