

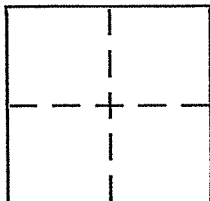
CORNER RECORD

Document Number 007.232.35

City of SAN ANSELMO

County of MARIN, California

Brief Legal Description LOT 3 ~ IDALIA PARK; 5 MAPS 18



CORNER TYPE

Government Corner Control
Meander Property
Rancho Other
Date of Survey 11/22/2007

COORDINATES (Optional)

N. _____
E. _____
Zone _____ NAD27 NAD83
NAD83 Epoch _____
Elev. _____
Vert. Datum: NGVD29 NAVD88
Meas. Units: Metric Imperial

Corner - Left as found Found and tagged Established Reestablished Rebuilt

Identification and type of corner found: Evidence used to identify or procedure used to establish or reestablish the corner:

Found HUB REMAINS ONLY & TAG LS 2771 AT THE MOST SOUTHEASTERLY CORNER OF LOT 3, BLOCK 1, 5 RM 18. THERE IS NO RECORD FOR THIS FOUND POINT.

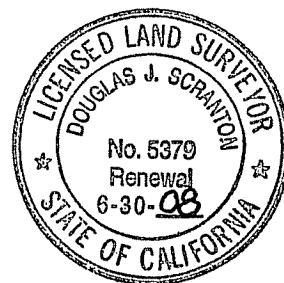
A description of the physical condition of the monument as found and as set or reset: set 1/2" rebar

WITH PLS CAP LS 5379 THROUGH HUB REMAINS TO PERPETUATE THE POSITION OF THIS HUB AS FOUND.

SURVEYOR'S STATEMENT

This Corner Record was prepared by me or under my direction in conformance with the Land Surveyor's Act on JANUARY 30th 2007

Signed Douglas J. Scranton P.L.S or R.C.E. No. PLS 5379



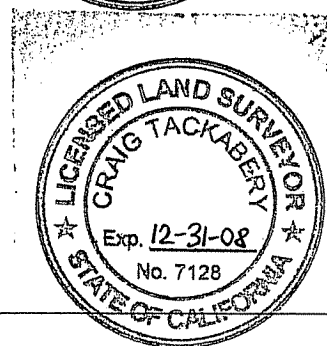
COUNTY SURVEYOR'S STATEMENT

This Corner Record was received FEBRUARY 1, 2007

and examined and filed FEBRUARY 26, 2007

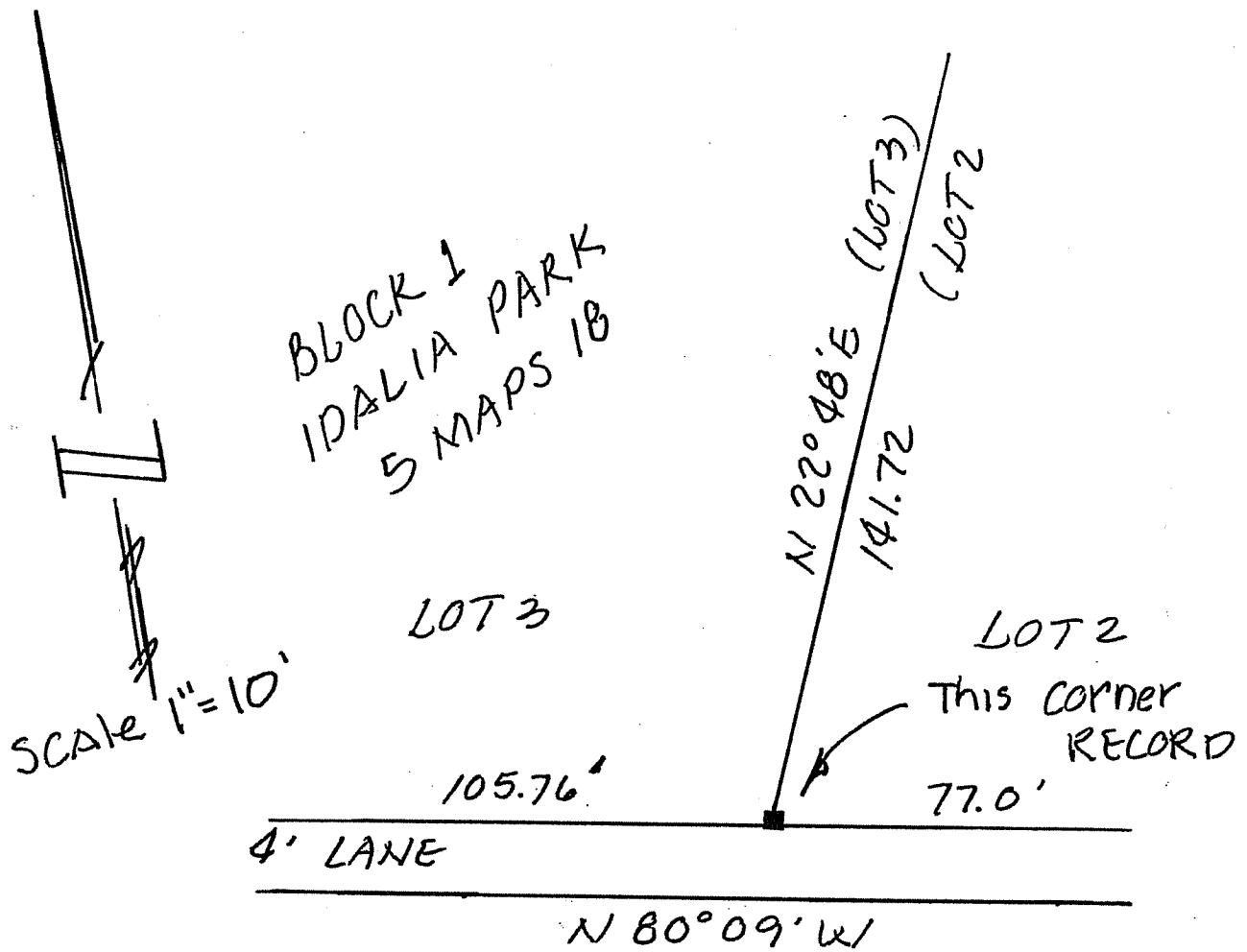
Signed [Signature] P.L.S or R.C.E. No. 7128

Title COUNTY SURVEYOR



County Surveyor's Comment _____

PREPARED BY: DOUGLAS J. SCRANTON
DO SCRANTON SURVEYING NOVATO, CA



- FOUND HUB remains only
 & the TAG LS 2771
 (NO RECORD)

RESET 1/2" rebar with PLS CAP 5379
 TO PERPETUATE THE HUBS POSITION
 ONLY; THE HUB MAY OR MAY NOT
 REPRESENT THE CORNER LOCATION