

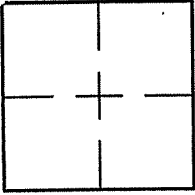
**CORNER RECORD**

Document Number A.P. 7-222-57

City of SAN ANSELMO

County of MARIN, California

Brief Legal Description PARCEL 1 PER 25 P.M. 30



**CORNER TYPE**

**COORDINATES (Optional)**

Government Corner  Control

Meander  Property

Rancho  Other

Date of Survey 4/28/08

N. \_\_\_\_\_  
 E. \_\_\_\_\_  
 Zone \_\_\_\_\_ NAD27  NAD83   
 NAD83 Epoch \_\_\_\_\_  
 Elev. \_\_\_\_\_  
 Vert. Datum: NGVD29  NAVD88   
 Meas. Units: Metric  Imperial

Corner- Left as found  Found and tagged  Established  Reestablished  Rebuilt

Identification and type of corner found: Evidence used to identify or procedure used to establish or reestablish the corner:  
REESTABLISHED A PORTION OF PARCEL 1 USING FOUND POINTS PER 25 P.M. 30 AND FOUND POINTS L.S. 7744  
AS SHOWN ON SHEET 2.

A description of the physical condition of the monument as found and as set or reset: SEE SHEET 2.

**SURVEYOR'S STATEMENT**

This Corner Record was prepared by me or under my direction in conformance with

the Land Surveyor's Act on MAY 2, 2008

Signed Lawrence P Doyle P.L.S. or R.C.E. No. P.L.S. 4694



**COUNTY SURVEYOR'S STATEMENT**

This Corner Record was received MAY 5, 2008

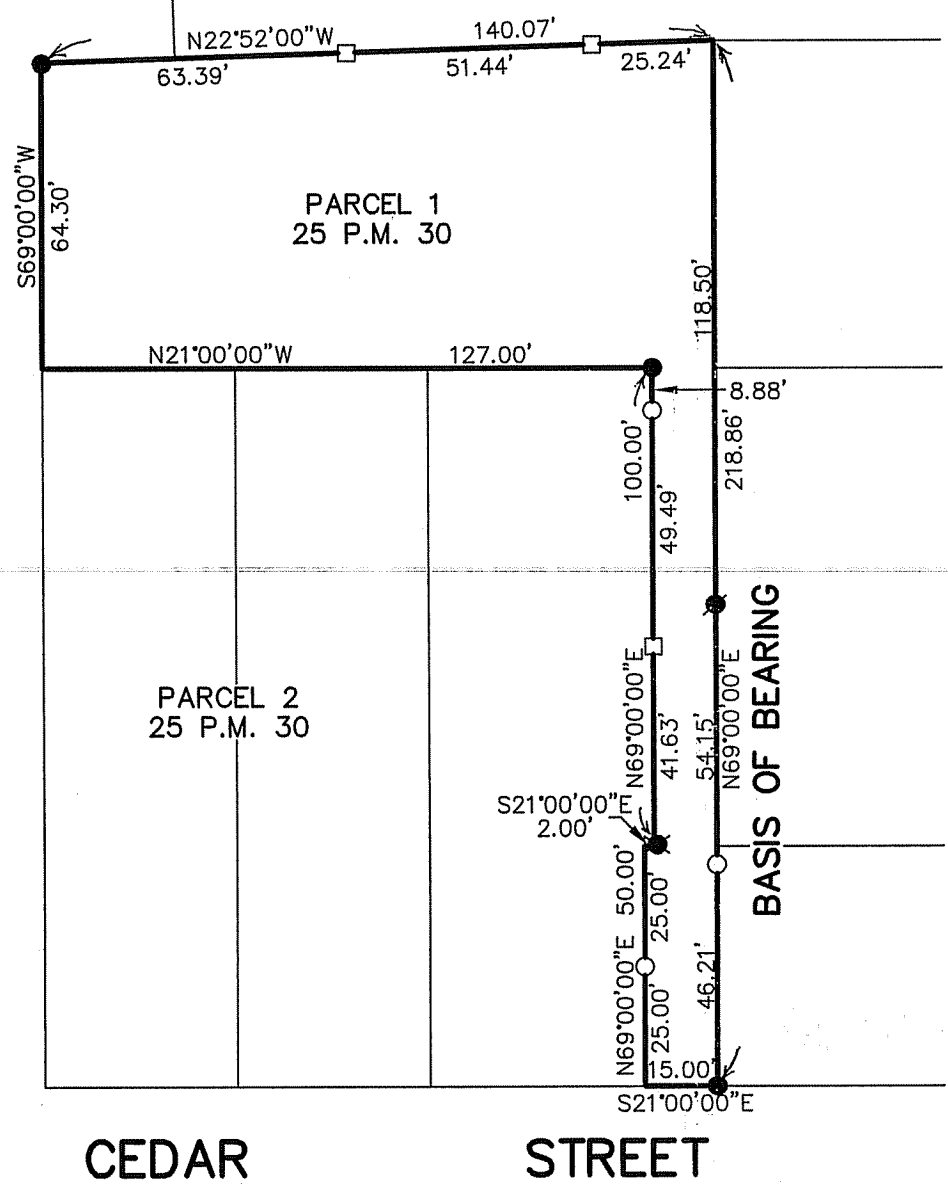
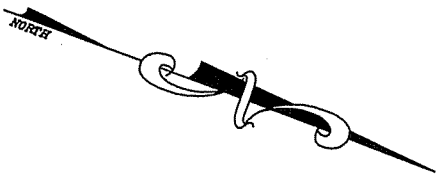
and examined and filed JUNE 2, 2008

Signed \_\_\_\_\_ P.L.S. or R.C.E. No. 7128

Title COUNTY SURVEYOR



County Surveyor's Comment \_\_\_\_\_



**BASIS OF BEARING**

THE BASIS OF BEARINGS IS N69°00'00"E  
 BETWEEN A FOUND REBAR/CAP L.S. 2771  
 PER 25 P.M. 30 AND A NAIL/TAG L.S. 7744.  
 PER COR.REC. AP# 7-222-57

**LEGEND**

- FOUND NAIL/TAG L.S. 7744
- FOUND REBAR/CAP L.S. 7744
- FOUND REBAR/CAP L.S. 2771
- SET HUB/TAG L.S. 4694
- SET PIPE/PLUG L.S. 4694



<b>CORNER RECORD</b> <b>PARCEL 1 PER 25 P.M. 30</b> SAN ANSELMO      MARIN COUNTY      CALIFORNIA		
SCALE: 1" = 40'	<b>LAWRENCE P. DOYLE</b> LAND SURVEYOR/CIVIL ENGINEER 100 HELENS LANE      MILL VALLEY CA 94941      (415-388-9585)	DRAWN BY:
DATE: 5/2/08		SHEET 2 OF 2
		DRAWING NO. 1785