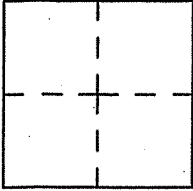


CORNER RECORD

Document number A.P.N. 007-222-57

City of SAN ANSELMO County of MARIN, California

Brief Legal Description BEING PARCEL "1" AS SHOWN UPON 25 P.M. 30,
MARIN COUNTY RECORDS



CORNER TYPE

Government Corner Control
Meander Property
Rancho Other
Date of Survey _____

COORDINATES

N. _____
E. _____
Zone _____ Datum _____
Elev. _____

Corner-- Left as found found and tagged Established Reestablished Rebuilt

Identification and type of corner found: Evidence used to identify or procedure used to establish or reestablish the corner:
UTILIZED MONUMENTS AS SHOWN UPON 25 P.M. 30 AS A BASIS OF BEARINGS
TO MONUMENT PROPERTY LINE POINTS OF PARCEL "1" AS SHOWN UPON ATTACHED
DRAWING.

A description of the physical condition of the monument as found and as set or reset.
FOUND 1/2" REBAR MONUMENTS MEASURED PER 25 P.M. 30

SURVEYOR'S STATEMENT

This Corner Record was prepared by me or under my direction in conformance with
the Land Surveyor's Act on March 23 2006.

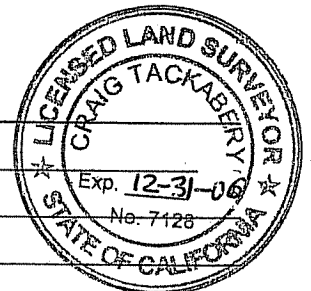
Signed *Stephen Jerome Flatland* L.S. Number 7744

COUNTY SURVEYOR'S STATEMENT

This Corner Record was received MARCH 22, 2006 and examined
and filed APRIL 25, 2006

Signed *Craig Tackabery* Title COUNTY SURVEYOR

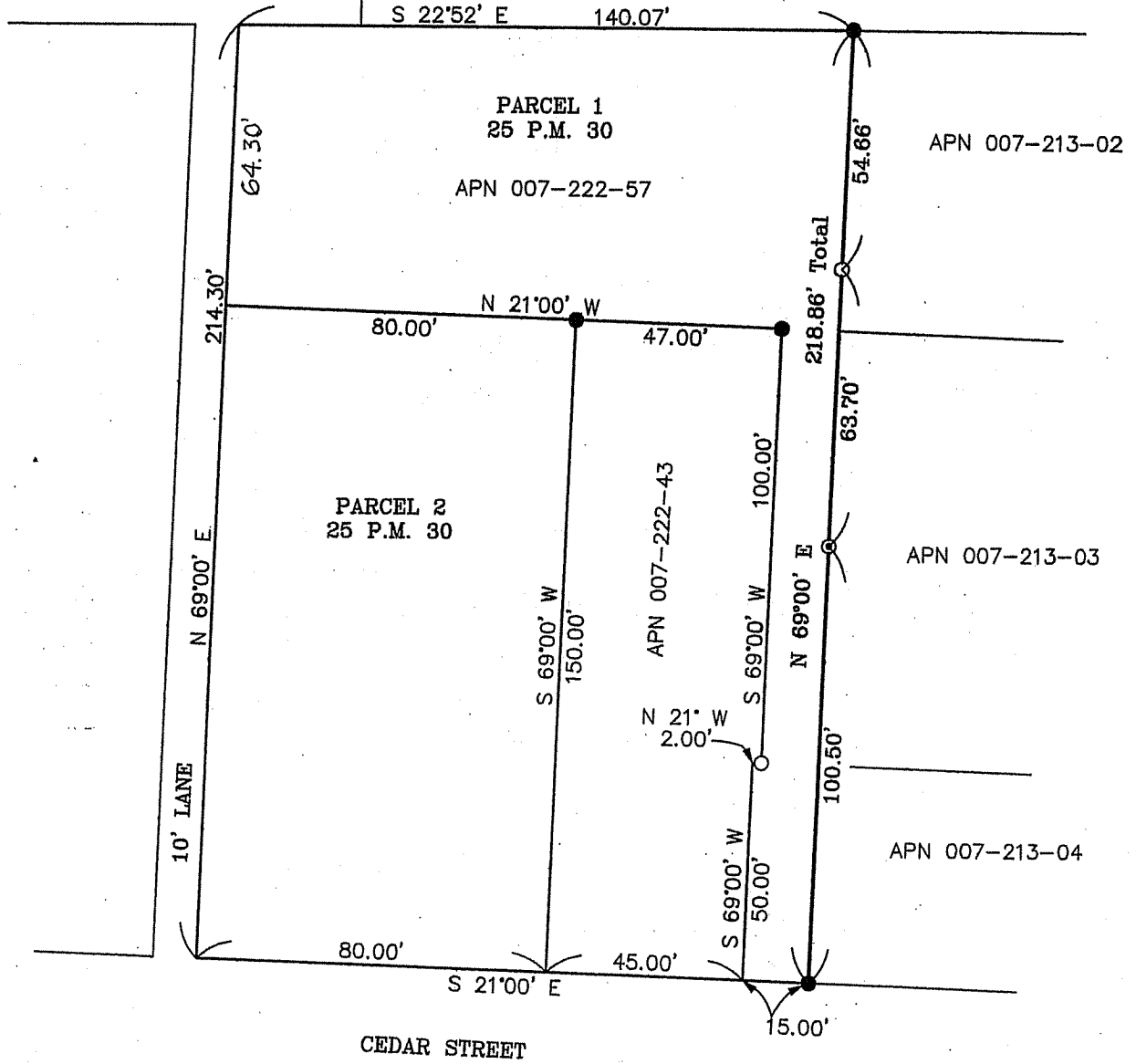
County Surveyor's Comment _____



APN 007-222-54

APN 007-222-38

SCALE: 1"=40'



● FOUND 1/2" REBAR & CAP, L.S. 2771 PER 25 P.M. 30

○ SET 1/2" REBAR & CAP, L.S. 7744

⊙ SET NAIL & BRASS TAG, L.S. 7744