

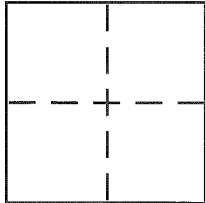
CORNER RECORD

Document Number 007-211-02

City of SAN ANSELMO

County of MARIN, California

Brief Legal Description LOT 57, "ROSS VALLEY PARK" (VOLUME 1 OF MAPS, AT PAGE 115)



CORNER TYPE

Government Corner Control
Meander Property
Rancho Other
Date of Survey AUGUST 19, 2014

COORDINATES (Optional)

N. _____
E. _____
Zone _____ NAD27 NAD83
NAD83 Epoch _____
Elev. _____
Vert. Datum: NGVD29 NAVD88
Meas. Units: Metric Imperial

Corner – Left as found Found and tagged Established Reestablished Rebuilt

Identification and type of corner found: Evidence used to identify or procedure used to establish or reestablish the corner:
FOUND: 2" DIAMETER BRASS DISC WITH PUNCH, STAMPED "RCE 12510" IN MONUMENT WELLS, IN SAN RAFAEL AVENUE, PER (17 PARCEL MAPS 96)

SEE SKETCH ON PAGE 2 OF 2

A description of the physical condition of the monument as found and as set or reset: _____

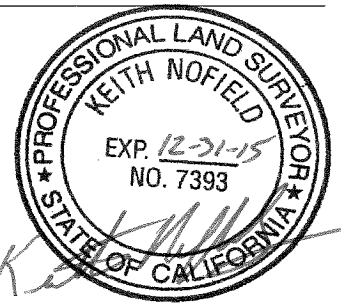
SET: 1/2" DIAMETER REBAR AND PLASTIC CAP "PLS 7393", OR NAIL AND 3/4" DIAMETER BRASS TAG "PLS 7393 (IN CONCRETE SIDEWALK)

SEE SKETCH ON PAGE 2 OF 2

SURVEYOR'S STATEMENT

This Corner Record was prepared by me or under my direction in conformance with the Land Surveyor's Act on SEPTEMBER 2, 2014

Signed Keith Nofield P.L.S or R.C.E. No. PLS 7393



COUNTY SURVEYOR'S STATEMENT

This Corner Record was received 09/12/2014

and examined and filed 9-24-2014

Signed Richard G. Simonitch P.L.S or R.C.E. No. 7821

Title DEPUTY



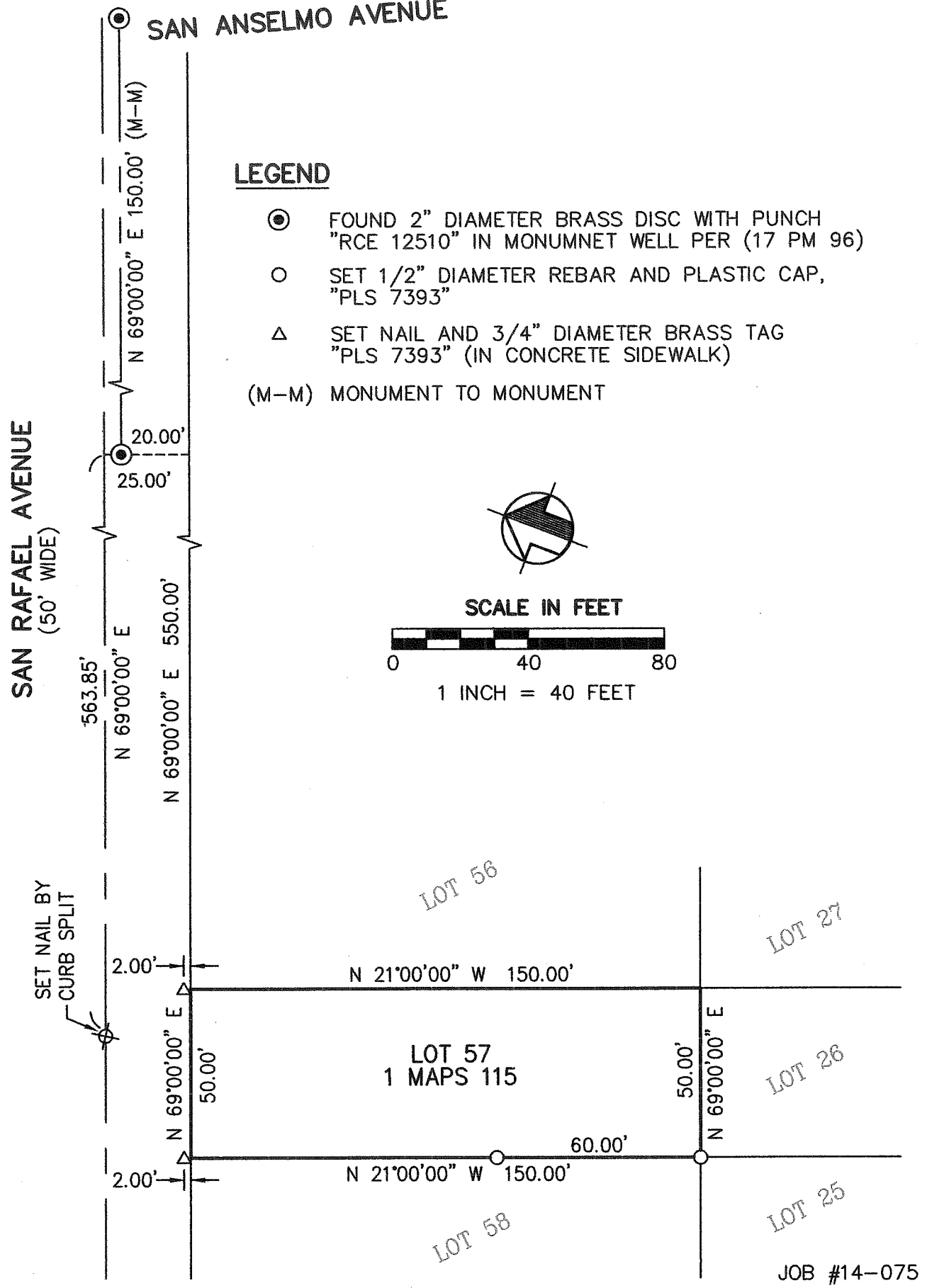
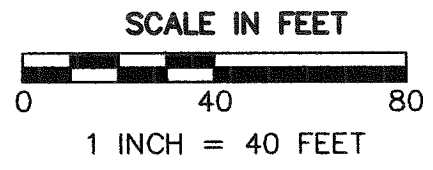
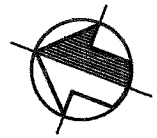
County Surveyor's Comment _____

SAN ANSELMO AVENUE

**SAN RAFAEL AVENUE
(50' WIDE)**

LEGEND

- ⊙ FOUND 2" DIAMETER BRASS DISC WITH PUNCH "RCE 12510" IN MONUMENT WELL PER (17 PM 96)
 - SET 1/2" DIAMETER REBAR AND PLASTIC CAP, "PLS 7393"
 - △ SET NAIL AND 3/4" DIAMETER BRASS TAG "PLS 7393" (IN CONCRETE SIDEWALK)
- (M-M) MONUMENT TO MONUMENT



JOB #14-075