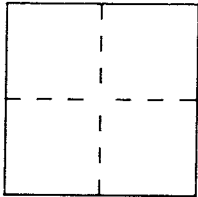


CORNER RECORD

A. P. Document Number 7-171-38

City of SAN ANSELMO County of MARIN, California

Brief Legal Description LOT 183, ROSS VALLEY PARK, VILLA LOTS, RM BK. 2 PG. 14



CORNER TYPE

Government Corner Control
Meander Property
Rancho Other
Date of Survey AUGUST, 1997

COORDINATES (Optional)

N. _____
E. _____
Zone _____ Datum _____
Elev. _____

Corner — Left as found Found and tagged Established Reestablished Rebuilt

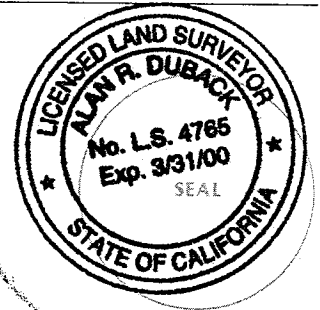
Identification and type of corner found: Evidence used to identify or procedure used to establish or reestablish the corner:
NORTHEAST CORNER LOT 183, FOUND CONCRETE MONUMENT WITH DISK STAMPED "RE 3230" AS SHOWN ON SURVEY BY W. O. LOCKETT JR, LS 2738 DATED NOV. 1984. MOST EASTERLY CORNER LOT 183, REFERENCE NAIL AND TAG STAMPED "LS 2738" AS SHOWN ON SAID SURVEY.

A description of the physical condition of the monument as found and as set or reset:
SEE SKETCH.

SURVEYOR'S STATEMENT

This Corner Record was prepared by me or under my direction in conformance with the Land Surveyors' Act on SEPT. 10 1997.

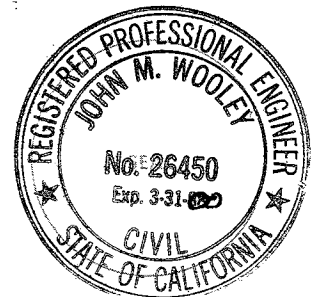
Signed [Signature] L.S. or R.C.E. Number LS 4765



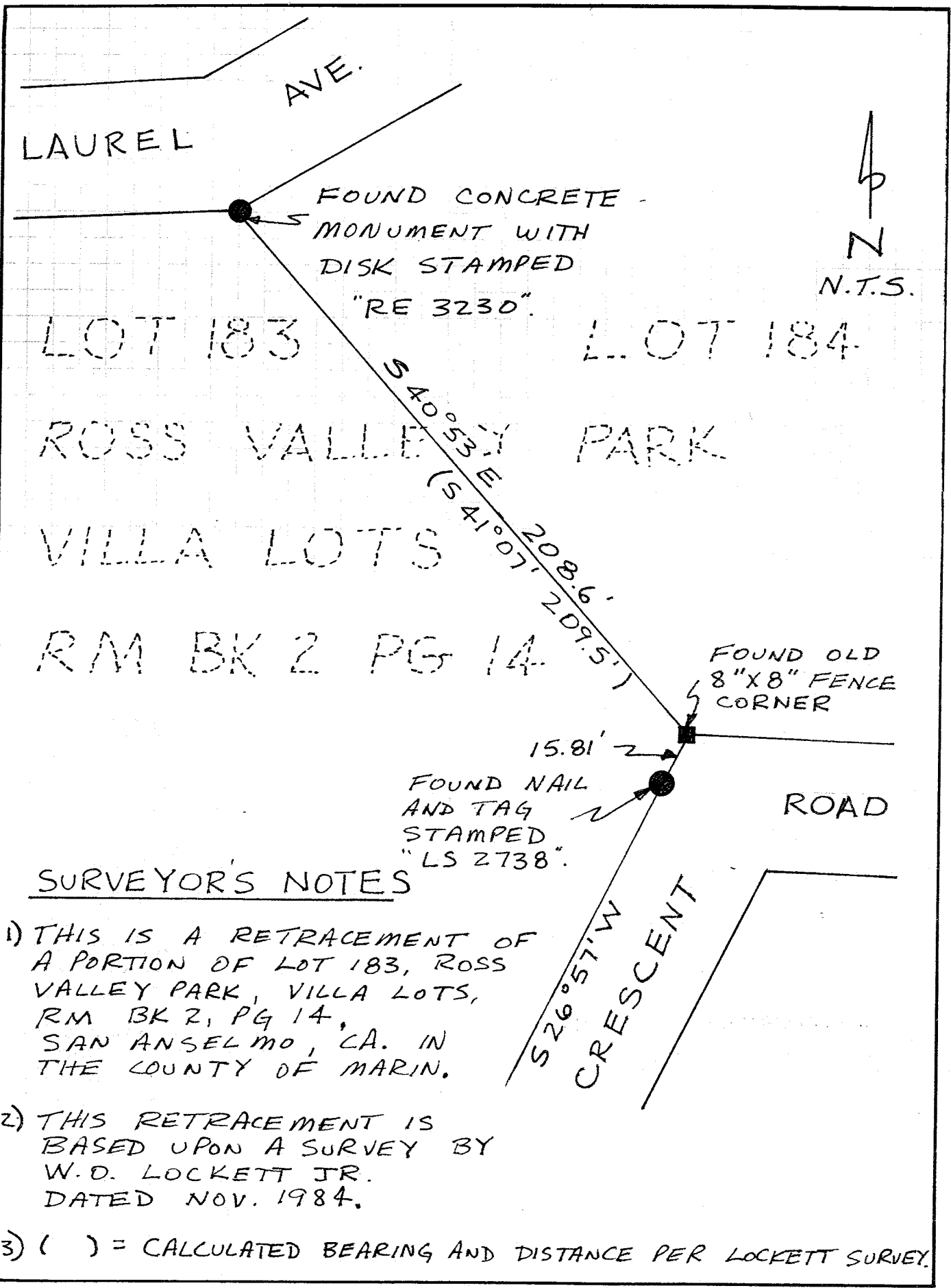
COUNTY SURVEYOR'S STATEMENT

This Corner Record was received December 30 1997 and examined and filed December 31 1997.

Signed [Signature] Title Deputy



County Surveyor's Comment _____



SURVEYOR'S NOTES

- 1) THIS IS A RETRACEMENT OF A PORTION OF LOT 183, ROSS VALLEY PARK, VILLA LOTS, RM BK 2, PG 14, SAN ANSELMO, CA. IN THE COUNTY OF MARIN.
- 2) THIS RETRACEMENT IS BASED UPON A SURVEY BY W.D. LOCKETT JR. DATED NOV. 1984.
- 3) () = CALCULATED BEARING AND DISTANCE PER LOCKETT SURVEY.