



**JERRICO ASSOCIATES**  
 SUITE 27  
 77 MARK DRIVE  
 SAN RAFAEL, CA 94903

A.P.# 7-131-61

6820

**CORNER RECORD**

1/1

COUNTY OF Marin T. \_\_\_\_\_ R. \_\_\_\_\_ MERIDIAN \_\_\_\_\_ CALIFORNIA  
 CORNER TYPE: GOVT. CORNER  MEANDER  RANCHO  CONTROL  OTHER   
 CORNER IDENTIFICATION — DATE OF VISIT \_\_\_\_\_ 19\_\_\_\_



CORNER — LEFT AS FOUND  FOUND AND TAGGED  REESTABLISHED OBLITERATED CORNER  REBUILT

PHYSICAL DESCRIPTION OF CORNER FOUND; EVIDENCE AND METHOD USED TO IDENTIFY OR REESTABLISH

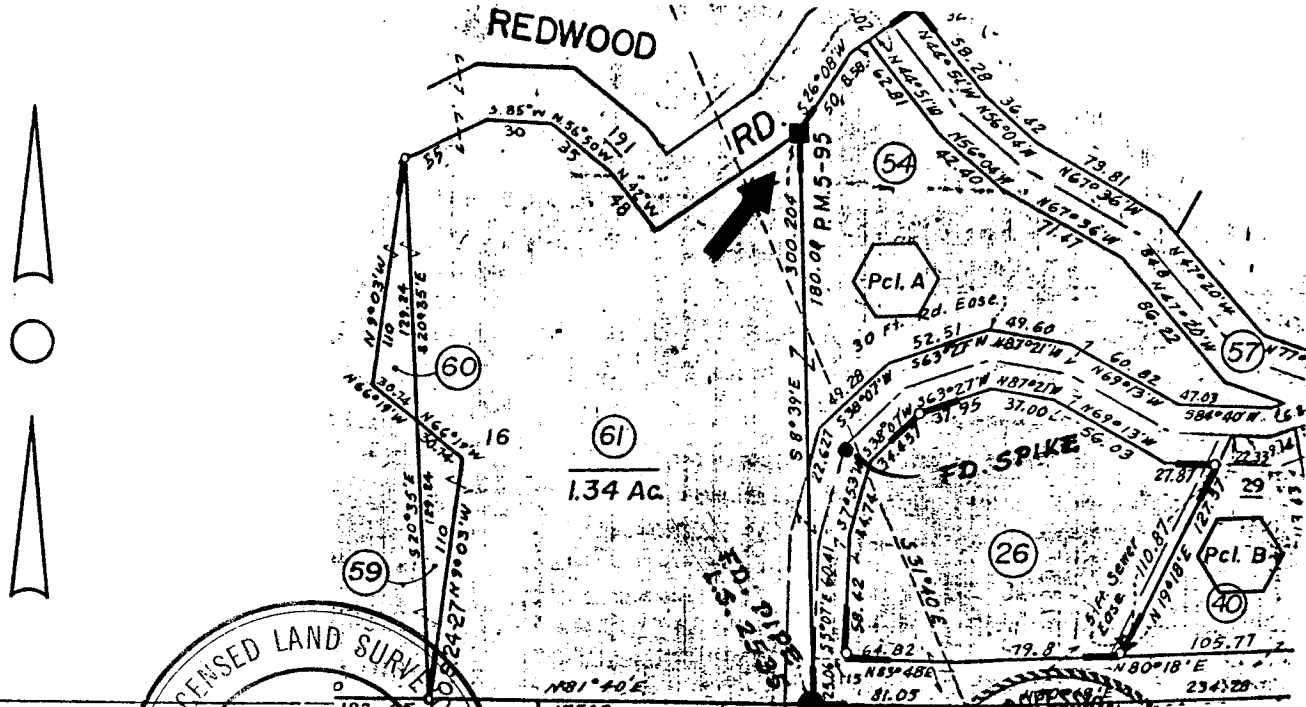
Found points per 9 P.M. 95 by Lockton.

PHYSICAL DESCRIPTION OF MONUMENTS REBUILT OR PERPETUATED

■ Set hub and tag L.S. 3887

CALIFORNIA COORDINATE SYSTEM ORDER: FIRST  SECOND  THIRD   
 STATIONS USED: NGS (USC & GS)  STATE  COUNTY  OTHER  STATION \_\_\_\_\_ STATION \_\_\_\_\_  
 ZONE \_\_\_\_\_ ELEVATION \_\_\_\_\_ NORTHINGS (Y) \_\_\_\_\_ EASTINGS (X) \_\_\_\_\_

SKETCH: (Include reference tie or witness points, remarks and topo of area)



**SURVEYOR'S CERTIFICATE**  
 THIS CORNER RECORD WAS PREPARED BY ME OR UNDER MY DIRECTION IN CONFORMANCE WITH THE LAND SURVEYORS ACT ON November 1 1989

SIGNED: \_\_\_\_\_  
 L.S. or R.C.E. No.: \_\_\_\_\_

COUNTY SURVEYOR'S OFFICE  
 THE CORNER RECORD WAS RECEIVED AND EXAMINED AND FILED BY: \_\_\_\_\_  
 BY: R.D. [Signature]  
 TITLE: Dep. [Signature]

DOCUMENT No. \_\_\_\_\_  
 STATEMENT ON BACK OF SHEET  
 YES  NO