

CORNER RECORD



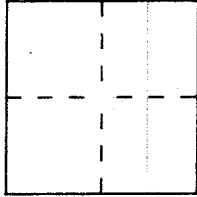
JERRICO ASSOCIATES
SUITE 27
77 MARK DRIVE
SAN RAFAEL, CA 94903

7388

Document Number 7-131-26 & 40

City of San Anselmo County of Marin, California

Brief Legal Description Lot B 5 P.M. 95 and 99-74276 adjoining parcel.



CORNER TYPE

COORDINATES
(Optional)

Government Corner Control
Meander Property
Rancho Other
Date of Survey March 28, 2000

N. _____
E. _____
Zone _____ Datum _____
Elev. _____

Corner — Left as found Found and tagged Established Reestablished Rebuilt

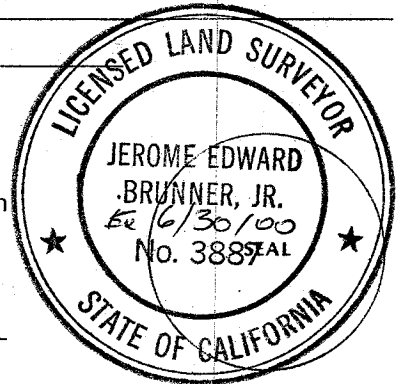
Identification and type of corner found: Evidence used to identify or procedure used to establish or reestablish the corner:
(A) (B) (C) Points established by Eugene Lockton and Jerrico Assoc. in 5 P.M. 95 and 36 O.S. 30

A description of the physical condition of the monument as found and as set or reset:
(D) (E) (F) Set #5 rebar and cap LS 3887.

SURVEYOR'S STATEMENT

This Corner Record was prepared by me or under my direction in conformance with the Land Surveyors' Act on March 28 2000.

Signed [Signature] L.S. or R.C.E. Number LS 3887



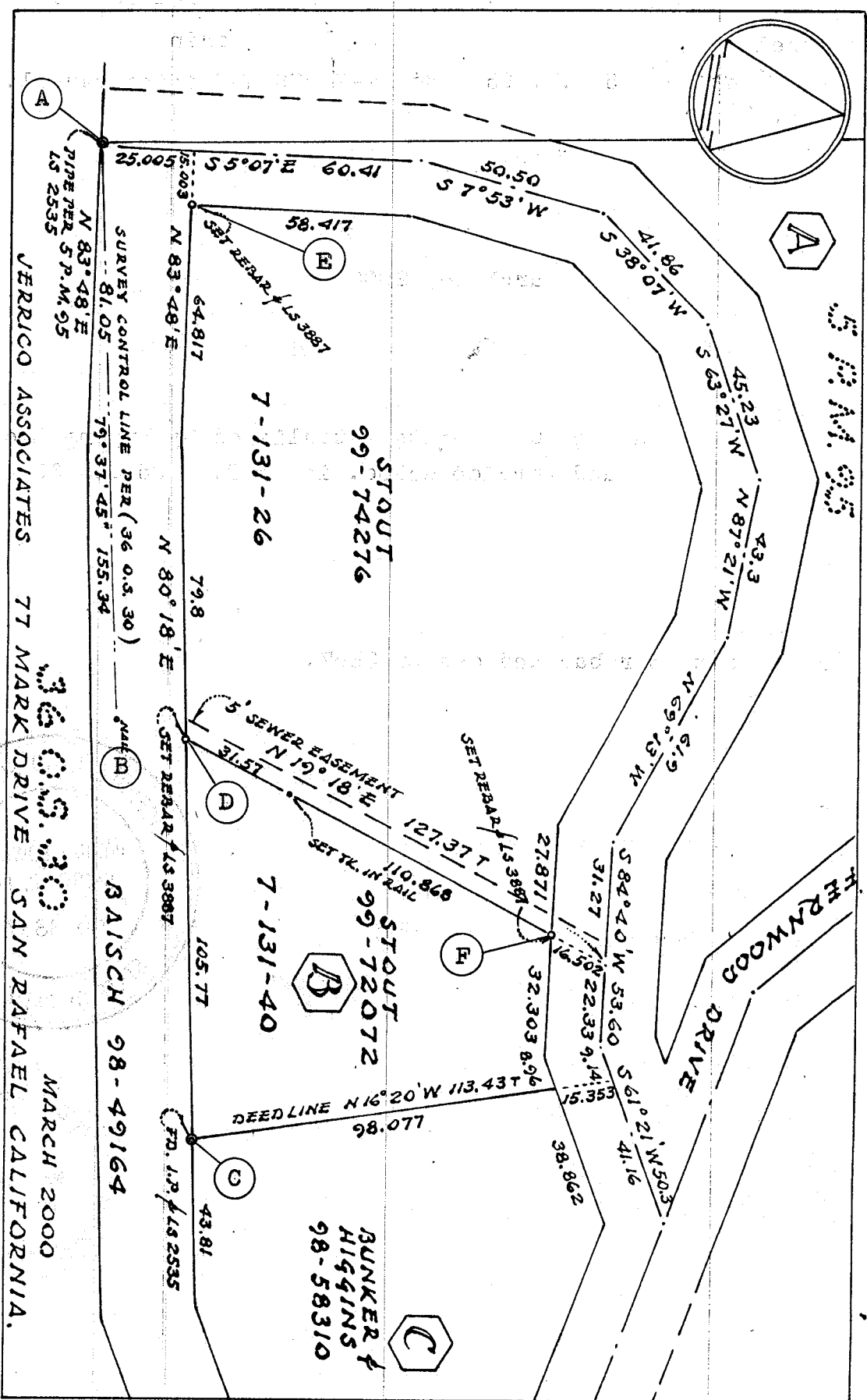
COUNTY SURVEYOR'S STATEMENT

This Corner Record was received March 29, 2000 and examined and filed March 30, 2000.

Signed [Signature] Title Deputy



County Surveyor's Comment _____



N $83^{\circ}48' E$ 81.05
 PIPE PER S.P.M. 95
 LS 2535
 VERICO ASSOCIATES 77 MARK DRIVE SAN RAFAEL CALIFORNIA.
 MARCH 2000

S-7388