



**JERRICO ASSOCIATES**  
 SUITE 27  
 77 MARK DRIVE  
 SAN RAFAEL, CA 94903

A.P. # 7-131-09

6974

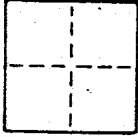
**CORNER RECORD**

1/2

COUNTY OF Marin T. \_\_\_\_\_ R. \_\_\_\_\_ MERIDIAN \_\_\_\_\_ CALIFORNIA

CORNER TYPE: GOV'T. CORNER  MEANDER  RANCHO  CONTROL  OTHER

CORNER IDENTIFICATION — DATE OF VISIT \_\_\_\_\_ 19\_\_\_\_



CORNER — LEFT AS FOUND  FOUND AND TAGGED  REESTABLISHED OBLITERATED CORNER  REBUILT

PHYSICAL DESCRIPTION OF CORNER FOUND; EVIDENCE AND METHOD USED TO IDENTIFY OR REESTABLISH

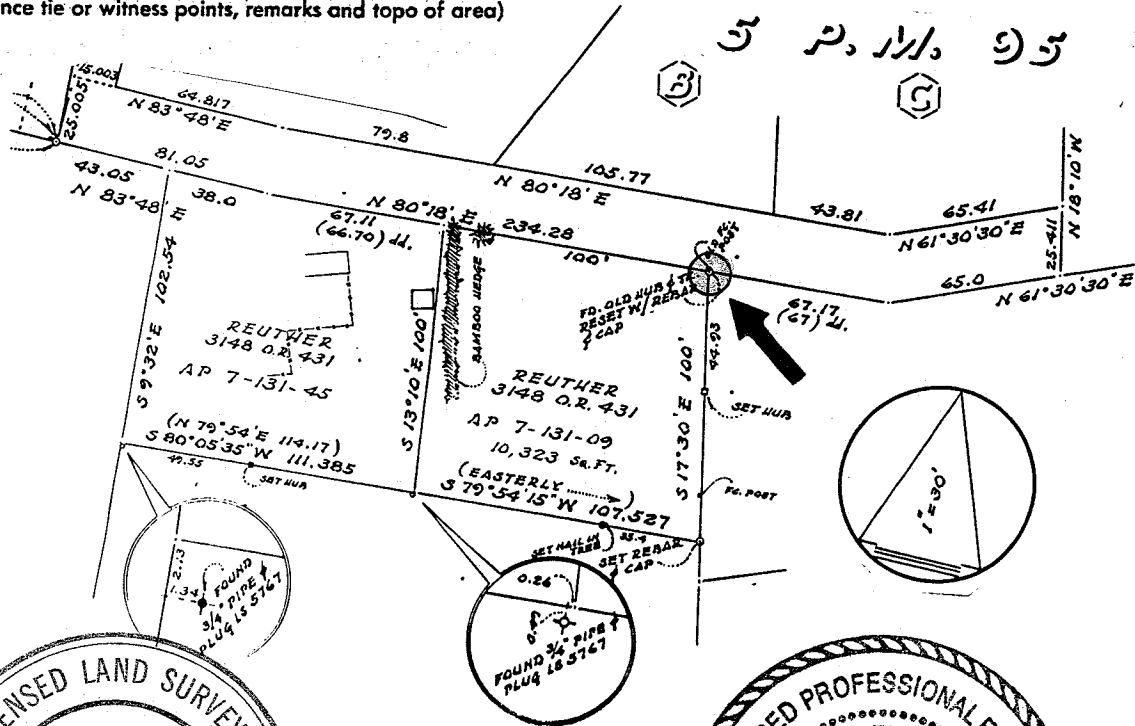
Southerly of 5 P.M. 95 Survey control points by Lockton as retraced for the survey of Albedi. *San Anselmo*

PHYSICAL DESCRIPTION OF MONUMENTS REBUILT OR PERPETUATED

Found old hub & tk. re-set with rebar and cap L.S. 3887.

CALIFORNIA COORDINATE SYSTEM ORDER: FIRST  SECOND  THIRD   
 STATIONS USED: NGS (USC & GS)  STATE  COUNTY  OTHER  STATION \_\_\_\_\_ STATION \_\_\_\_\_  
 ZONE \_\_\_\_\_ ELEVATION \_\_\_\_\_ NORTHINGS (Y) \_\_\_\_\_ EASTINGS (X) \_\_\_\_\_

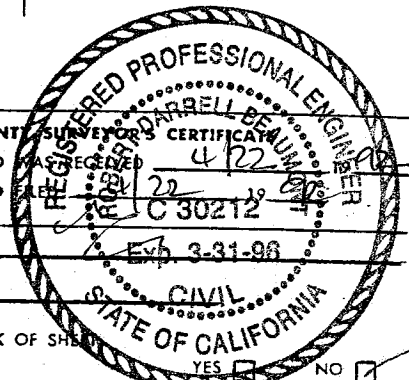
SKETCH: (Include reference tie or witness points, remarks and topo of area)



**SURVEYOR'S CERTIFICATE**  
 THIS CORNER RECORD WAS PREPARED BY JEROME EDWARD BRUNNER, JR. UNDER MY DIRECTION IN CONFORMANCE WITH THE LAND SURVEYORS ACT ON April 20 1992

SIGNED: [Signature]  
 L.S. or R.C.E. No.: 3887

COUNTY SURVEYOR'S CERTIFICATE  
 THE CORNER RECORD WAS RECEIVED AND EXAMINED AND FILED BY: [Signature] C 30212  
 TITLE: Exp 3-31-98  
 DOCUMENT No. \_\_\_\_\_  
 STATEMENT ON BACK OF SHEET YES  NO





**JERRICO ASSOCIATES**  
 SUITE 27  
 77 MARK DRIVE  
 SAN RAFAEL, CA 94903

A.P. # 7-131-09

6974

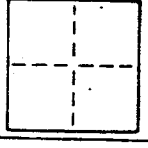
**CORNER RECORD**

2/2

COUNTY OF Marin T. \_\_\_\_\_ R. \_\_\_\_\_ MERIDIAN \_\_\_\_\_ CALIFORNIA

CORNER TYPE: GOVT. CORNER  MEANDER  RANCHO  CONTROL  OTHER

CORNER IDENTIFICATION — DATE OF VISIT \_\_\_\_\_ 19\_\_\_\_



CORNER — LEFT AS FOUND  FOUND AND TAGGED  REESTABLISHED OBLITERATED CORNER  REBUILT

PHYSICAL DESCRIPTION OF CORNER FOUND; EVIDENCE AND METHOD USED TO IDENTIFY OR REESTABLISH

Southerly of 5 P.M. 95 Survey control points by Lockton as retraced for the survey of Albedi. San Anselmo

PHYSICAL DESCRIPTION OF MONUMENTS REBUILT OR PERPETUATED

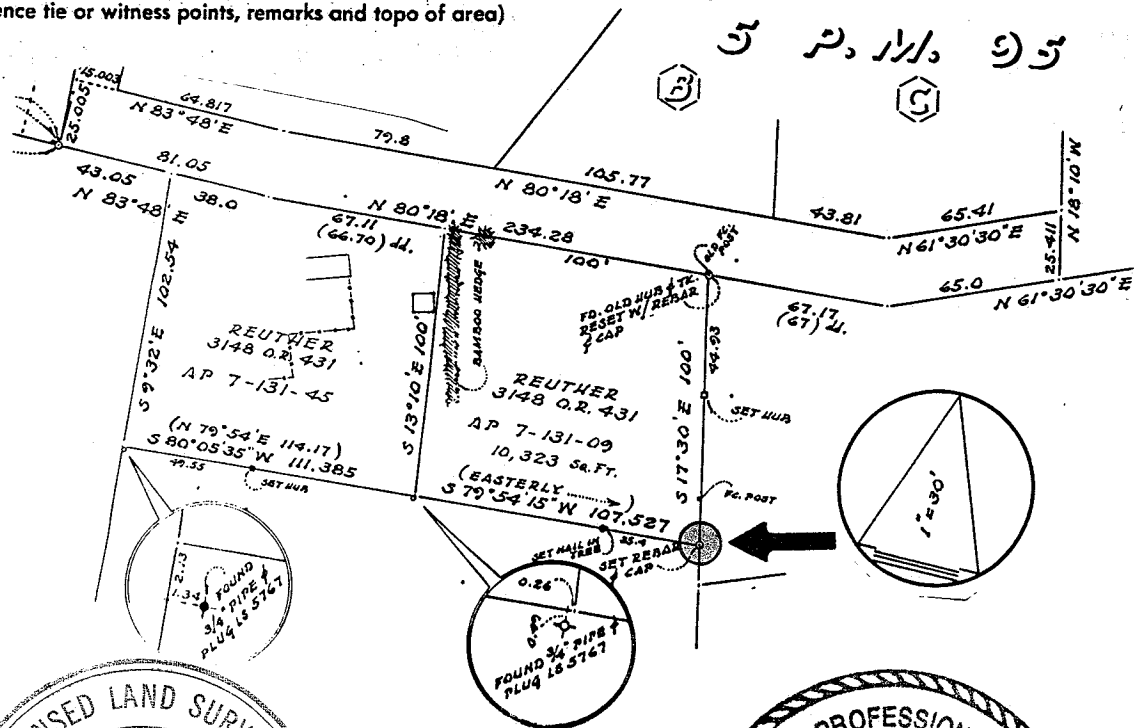
Set rebar and cap L.S. 3887

CALIFORNIA COORDINATE SYSTEM ORDER: FIRST  SECOND  THIRD

STATIONS USED: NGS (USC & GS)  STATE  COUNTY  OTHER  STATION \_\_\_\_\_ STATION \_\_\_\_\_

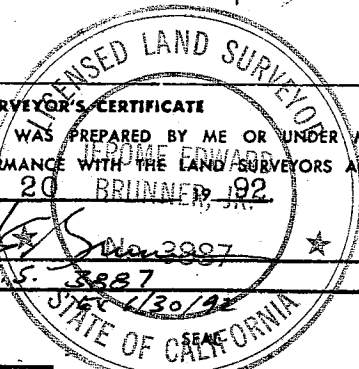
ZONE \_\_\_\_\_ ELEVATION \_\_\_\_\_ NORTHINGS (Y) \_\_\_\_\_ EASTINGS (X) \_\_\_\_\_

SKETCH: (Include reference tie or witness points, remarks and topo of area)



**SURVEYOR'S CERTIFICATE**  
 THIS CORNER RECORD WAS PREPARED BY ME OR UNDER MY DIRECTION IN CONFORMANCE WITH THE LAND SURVEYORS ACT ON April 20 BRUNNER, JR.

SIGNED: [Signature]  
 L.S. or R.C.E. No.: L.S. 3887



COUNTY SURVEYOR'S CERTIFICATE  
 THE CORNER RECORD WAS RECEIVED, EXAMINED AND FOUND CORRECT BY: ROBERT D. BEAUMONT 1992  
 TITLE: C 30212

DOCUMENT No. \_\_\_\_\_  
 STATEMENT ON BACK OF STATEMENT

