

CORNER RECORD

Document Number

007-121-84

City of San Anselmo

County of

Marin

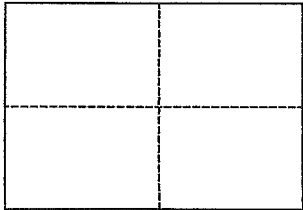
California

Brief Legal Description

Parcel A, 2005 Maps 267, Marin County Records

CORNER TYPE

COORDINATES
(Optional)



Government Corner ___ Control ___
Meander ___ Property X
Rancho ___ Other ___
Date of Survey October 26, 2016

North ___
East ___
Zone ___ Datum ___
Elev. ___

Corner ___ Left as found Found and tagged Established Reestablished Rebuilt

Identification and type of corner found: Evidence used to identify or procedure used to establish or reestablish the corner:

Found 3/4" Iron Pipes as shown on 2005 of Maps at Page 267 at the most northerly corner of Parcel A and the Southeastery corner of said Parcel A (see sketch). Held Record Bearing.

A description of the physical condition of the monument as found and as set or reset: _____

Set Lath and 8" Ginny on property line for constructing a sanitary sewer lateral at random intervals.

SURVEYOR'S STATEMENT

This Corner Record was prepared by me or under my direction in conformance with the Land Surveyors' Act on November 12, 2016

Signed [Signature] L.S. Number 6330



COUNTY SURVEYOR'S STATEMENT

This Corner Record was received DECEMBER 13, 2016

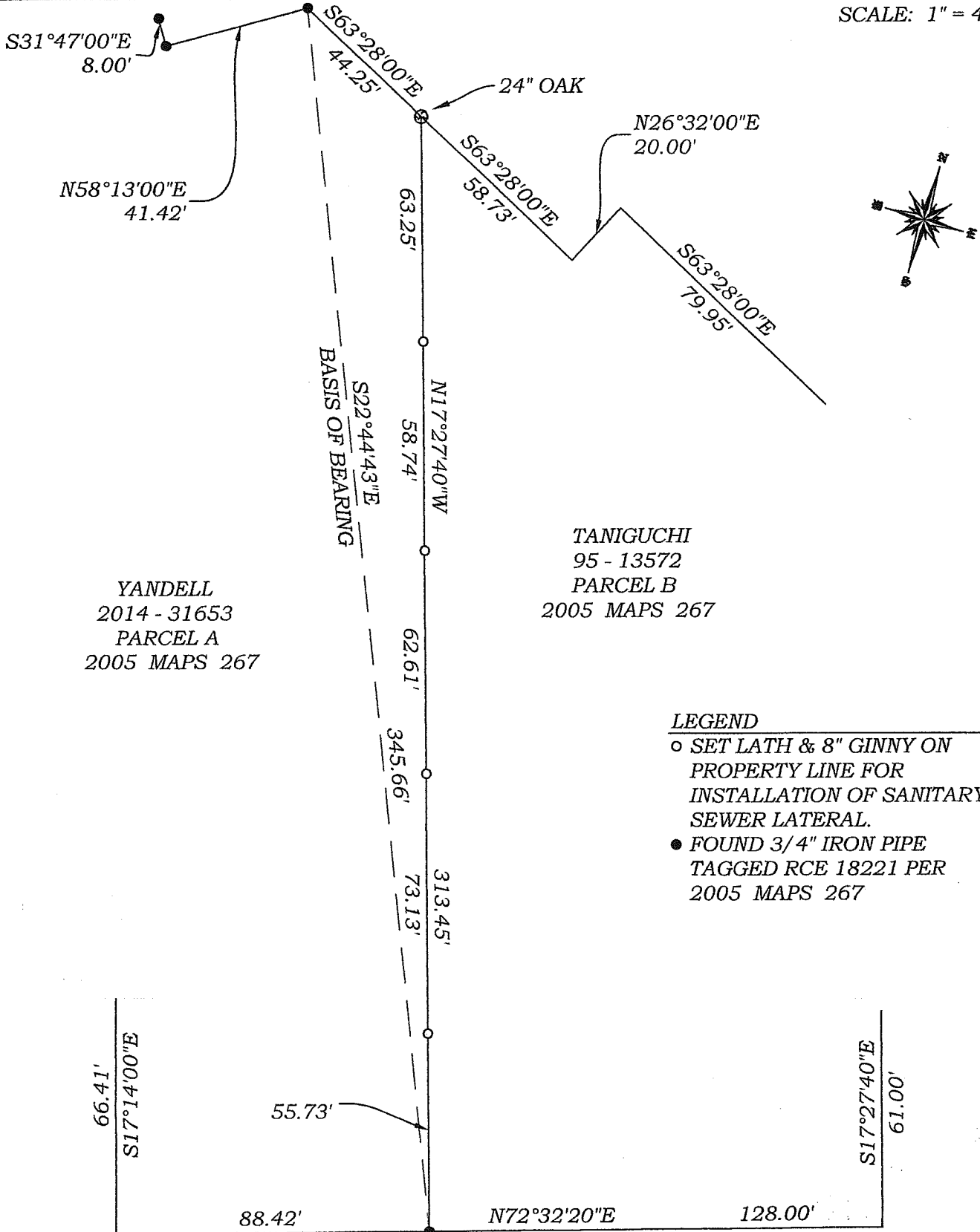
and examined and filed JANUARY 24, 2017

Signed [Signature] Title COUNTY SURVEYOR



County Surveyor's Comment _____

SCALE: 1" = 40'



YANDELL
 2014 - 31653
 PARCEL A
 2005 MAPS 267

TANIGUCHI
 95 - 13572
 PARCEL B
 2005 MAPS 267

LEGEND

- SET LATH & 8" GINNY ON PROPERTY LINE FOR INSTALLATION OF SANITARY SEWER LATERAL.
- FOUND 3/4" IRON PIPE TAGGED RCE 18221 PER 2005 MAPS 267

R.W. DAVIS & ASSOCIATES, INC.
 LAND SURVEYORS

45 Leveroni Court
 Novato CA 94949
 L.S. 6330

Tel. (415) 883-9099
 Fax (415) 883-2016
 Email: rwdavis@rwdavis-survey.com

© 2013

Rev.	Date: 11-12-16
Job No. 442-008	Scale: 1" = 40'
CORNER RECORD	
APN 007 - 121 - 84	