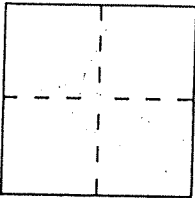


CORNER RECORD

Document Number 007-092-35
City of San Anselmo County of Marin, California

Brief Legal Description Centerline monument in front of #100 Allyn Ave.



CORNER TYPE

Government Corner Control
Meander Property
Rancho Other
Date of Survey _____

COORDINATES (Optional)

N. _____
E. _____
Zone _____ Datum _____
Elev. _____

Corner — Left as found Found and tagged Established Reestablished Rebuilt

Identification and type of corner found: Evidence used to identify or procedure used to establish or reestablish the corner:

Found 4" Diameter concrete cylinder monument with
brass nail 0.8' Under A.C. Surface.

A description of the physical condition of the monument as found and as set or reset:

A standard well-type cast iron ring & lid was placed
over existing concrete monument.

SURVEYOR'S STATEMENT

This Corner Record was prepared by me or under my direction in conformance with the Land Surveyors' Act on November 15, 2007

Signed David Harp L.S. or R.C.E. Number LS 5290

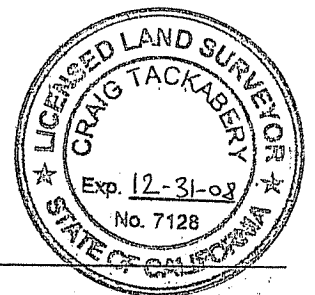


COUNTY SURVEYOR'S STATEMENT

This Corner Record was received NOVEMBER 26, 2008 and examined

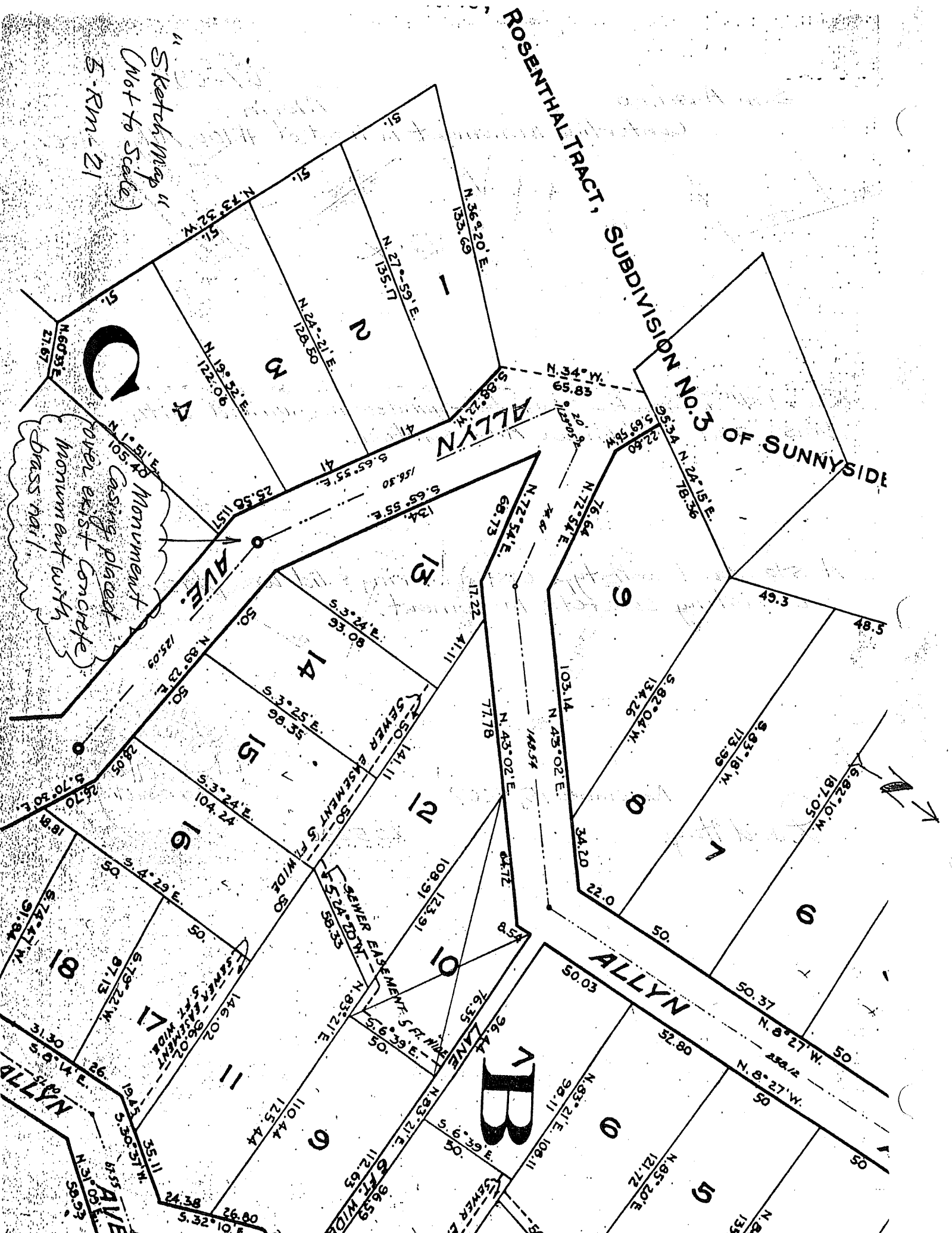
and filed JANUARY 2, 2008

Signed _____ Title COUNTY SURVEYOR



County Surveyor's Comment _____

ROSENTHAL TRACT, SUBDIVISION NO. 3 OF SUNNYSIDE



"Sketch Map"
(Not to Scale)
S.R.M-21

Monument
Casing placed
over exist concrete
monument with
brass nail

