



JERRICO ASSOCIATES

7482

SUITE 27
77 MARK DRIVE
SAN RAFAEL, CA 94903

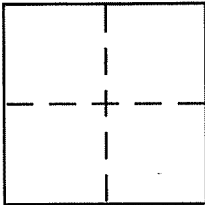
CORNER RECORD

Document Number 7-092-19

City of San Anselmo

County of Marin, California

Brief Legal Description Lot 3 Block B Floribel Manor 5 R.M. 21



CORNER TYPE

Government Corner Control
 Meander Property
 Rancho Other
 Date of Survey March 26, 2003

COORDINATES (Optional)

N. _____
 E. _____
 Zone _____ NAD27 NAD83
 NAD83 Epoch _____
 Elev. _____
 Vert. Datum: NGVD29 NAVD88
 Meas. Units: Metric Imperial

Corner - Left as found Found and tagged Established Reestablished Rebuilt

Identification and type of corner found: Evidence used to identify or procedure used to establish or reestablish the corner:
Found points as in 31 S 99.

A description of the physical condition of the monument as found and as set or reset: _____

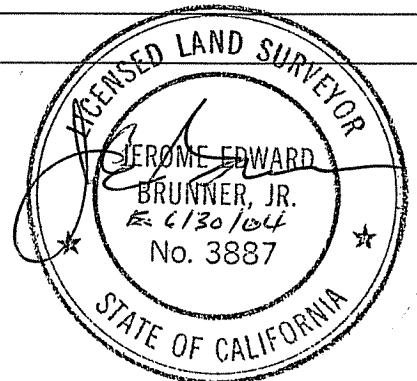
(A) Set rebar and cap LS 3887 on P/L 8.66' from front corner.

(B) Set rebar and cap LS 3887 on P/L 55.98' from front corner.

SURVEYOR'S STATEMENT

This Corner Record was prepared by me or under my direction in conformance with the Land Surveyor's Act on March 26, 2003

Signed [Signature] P.L.S or R.C.E. No. LS 3887



COUNTY SURVEYOR'S STATEMENT

This Corner Record was received July 11, 2003

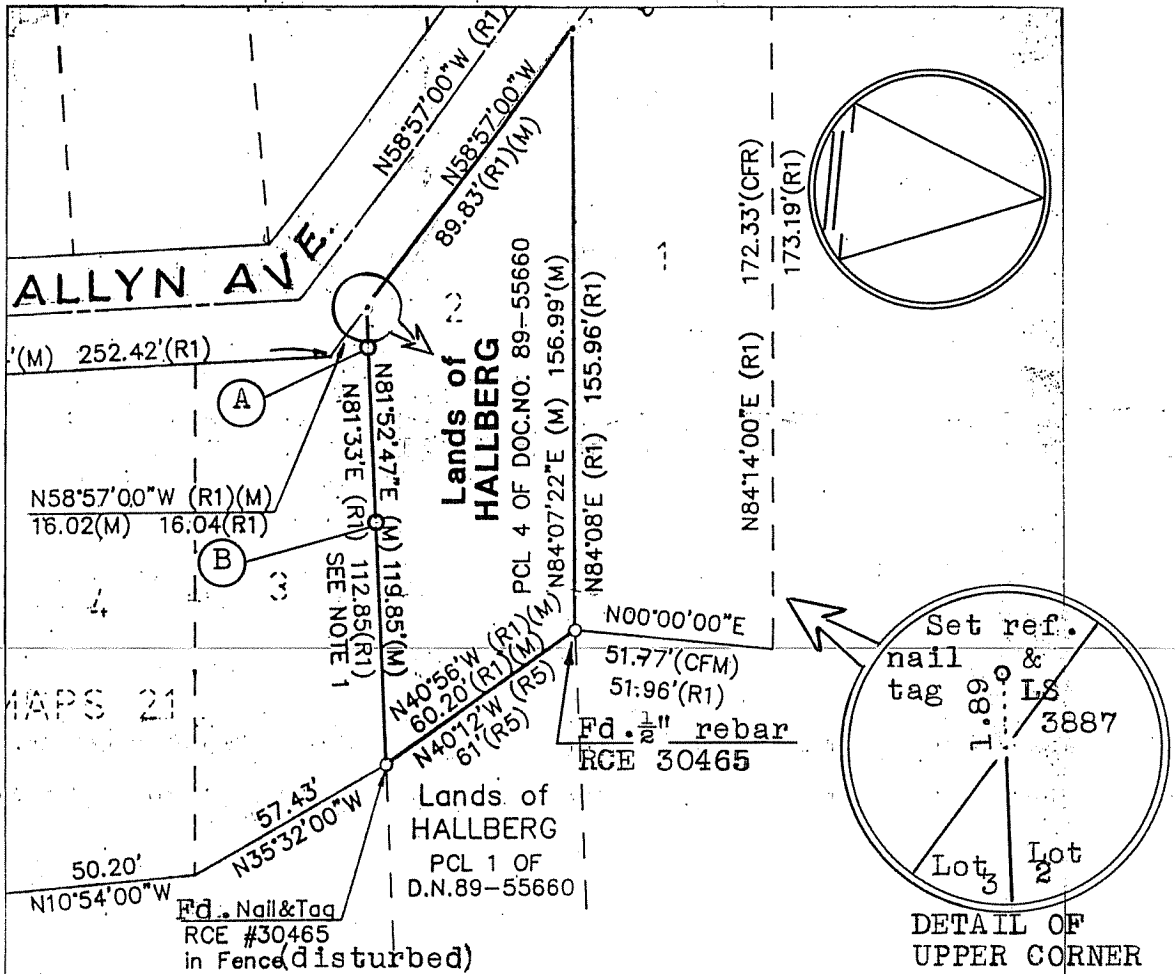
and examined and filed July 22, 2003

Signed [Signature] P.L.S or R.C.E. No. 30212

Title DEPUTY



County Surveyor's Comment _____



Note: Lots 2 & 3 of Block B do not close mathematically. The given Distance of 112.85 is in error and should be 119.85 as this distance will close Lot 3 within reasonable limits and fits with record dimensions along Allyn Ave. and the rear property lines of Block B

3 / 3 9 9

RECORD OF SURVEY

OF THE LANDS OF
JAMES L. HALLBERG
 PCL 4 OF DOC.NO. 89-55660