

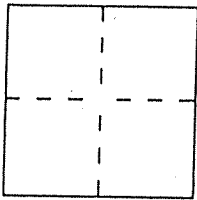
CORNER RECORD

Document Number 007-092-16

City of San Anselmo

County of Marin, California

Brief Legal Description Street Monument at front (w/ly) of 007-092-16



CORNER TYPE

Government Corner Control
 Meander Property
 Rancho Other
 Date of Survey _____

COORDINATES (Optional)

N. _____
 E. _____
 Zone _____ Datum _____
 Elev. _____

Corner — Left as found Found and tagged Established Reestablished Rebuilt

Identification and type of corner found: Evidence used to identify or procedure used to establish or reestablish the corner:
We removed railroad spike before the re-paving job in
Allyn Avenue

A description of the physical condition of the monument as found and as set or reset:
Reset monument in its original position before
repaving work & set chisled cross @ center point
of reset railroad spike

SURVEYOR'S STATEMENT

This Corner Record was prepared by me or under my direction in conformance with the Land Surveyors' Act on November 15, 2007

Signed David Harp L.S. or R.C.E. Number LS 5290



COUNTY SURVEYOR'S STATEMENT

This Corner Record was received NOVEMBER 26, 2007 and examined and filed JANUARY 2, 2008

Signed _____ Title COUNTY SURVEYOR



County Surveyor's Comment _____

Reset Railroad Spike
after re-paving
work in Allyn Av.

LANDS OF FREEMAN
DN. 85-52247

LOT 12

(007-092-16)

28 O.S. 94

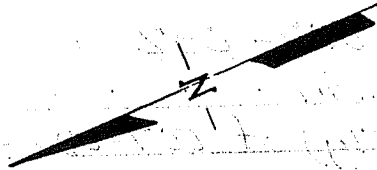
(007-092-36)

LANDS OF CULBERTSON
DN. 90-61906

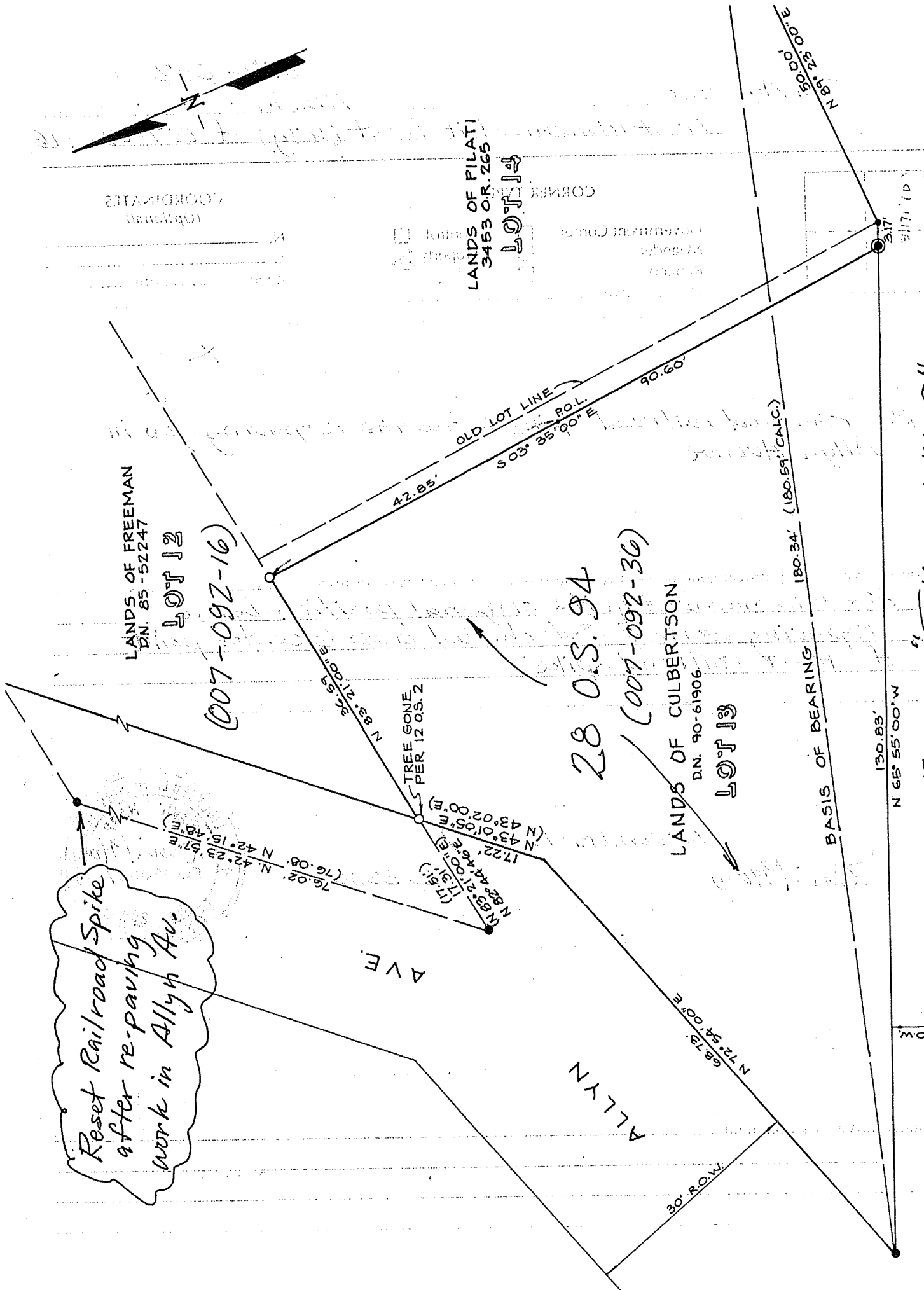
LOT 13

LANDS OF PILATI
3453 O.R. 265

LOT 14



COORDINATES



"SKETCH MAP"
(Not to Scale)

ALLYN AVE.

130.83'
N 65° 55' 00\" W

180.34' (180.59' CALC.)

50.00'
N 81° 23' 00\" E

30' ROW

30' ROW

68.73'
N 72° 54' 00\" E

AVF

ALLYN

42.85'
503° 35' 00\" E
90.60'

TREE GONE
PER 1205.2

N 82° 44' 46\" E
17.22'
N 43° 01' 05\" E
N 43° 02' 00\" E

76.02'
N 42° 23' 57\" E

76.08'
N 42° 15' 48\" E

PO.L
503° 35' 00\" E

3.17'