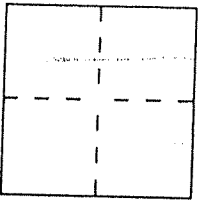


CORNER RECORD

Document Number 007-052-60  
County of Marin, California

City of San Anselmo

Brief Legal Description Lot One of 2 RM 43, San Anselmo CA



CORNER TYPE

Government Corner  Control   
Meander  Property   
Rancho  Other   
Date of Survey 03/14/08

COORDINATES (Optional)

N. \_\_\_\_\_  
E. \_\_\_\_\_  
Zone \_\_\_\_\_ Datum \_\_\_\_\_  
Elev. \_\_\_\_\_

Corner — Left as found  Found and tagged  Established  Reestablished  Rebuilt

Identification and type of corner found: Evidence used to identify or procedure used to establish or reestablish the corner:

Found Nail & Tag LS 4402 in concrete sidewalk as shown on attached sketch map. (over) Position of point not verified in relation to other monuments. Only the historical position of this point preserved as directed by Town Engineer, Town of San Anselmo.

A description of the physical condition of the monument as found and as set or reset:

Set nail & tag LS 5290 in same location after reconstruction of new sidewalk. Position of point not verified by other measurements.

SURVEYOR'S STATEMENT

This Corner Record was prepared by me or under my direction in conformance with the Land Surveyors' Act on 03/17/08

Signed David Harp L.S. or R.C.E. Number LS 5290

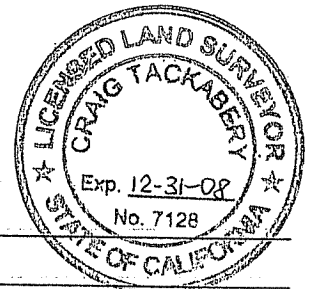


COUNTY SURVEYOR'S STATEMENT

This Corner Record was received MARCH 20, 2008 and examined

and filed APRIL 30, 2008

Signed \_\_\_\_\_ Title COUNTY SURVEYOR



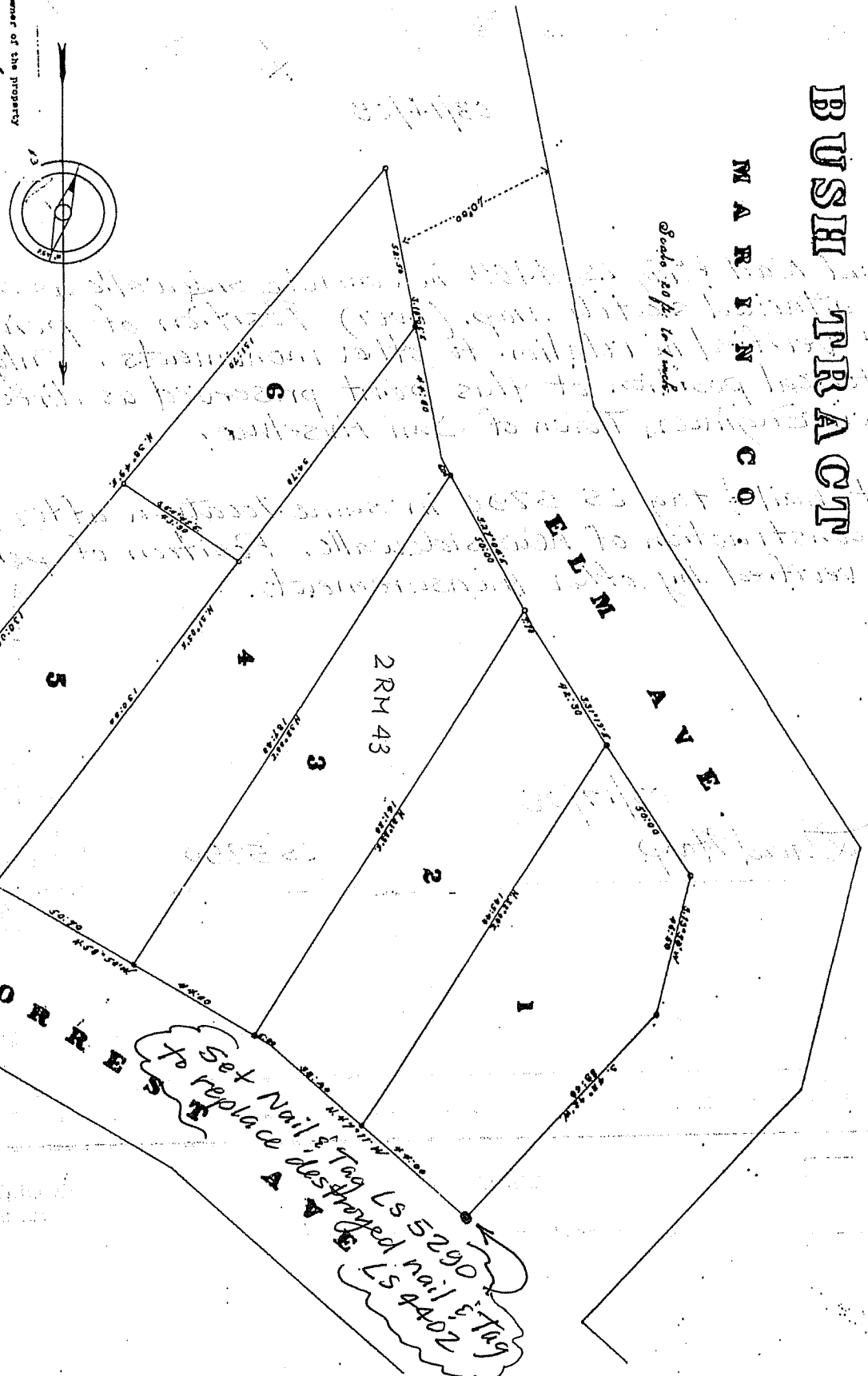
County Surveyor's Comment \_\_\_\_\_

2 RM 43

# SUBDIVISION OF LOT 94 BUSH TRACT

MARIN CO.

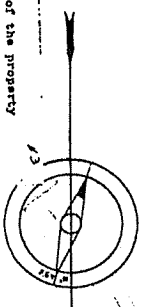
Scale 20 ft. to 1 inch.



"SKETCH MAP"

(not to scale)

43



understand and agree that I am the owner of the property  
 and subdivided and described in the accompanying map.  
 Myself  
 (Signature)

BY ORDER OF  
 COUNTY OF MARIN

On this 23rd day of January 1934  
 at San Rafael, California  
 I, the undersigned, County Clerk of Marin County, do hereby certify that the foregoing map is a true and correct copy of the original map on file in my office.

Surveyed and drawn by