

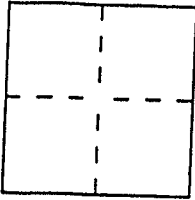
CORNER RECORD

City of San Anselmo

Document Number 007-051-13

Brief Legal Description lot 3 of RM 2-57

County of Marin, California



CORNER TYPE

Government Corner Control
 Meander Property
 Rancho Other
 Date of Survey _____

COORDINATES (Optional)

N. _____
 E. _____
 Zone _____ Datum _____
 Elev. _____

Corner — Left as found Found and tagged Established Reestablished Rebuilt

Identification and type of corner found: Evidence used to identify or procedure used to establish or reestablish the corner:
Found Monuments per the survey filed in Book 23 of Parcel Maps at Page 63, Marin County Records.

A description of the physical condition of the monument as found and as set or reset:
Set 5/8" Rebar & Cap LS 5290 as shown on the attached Sketch Map "A" (over)

SURVEYOR'S STATEMENT

This Corner Record was prepared by me or under my direction in conformance with the Land Surveyors' Act on May 8th 2005.

Signed David Harp L.S. or R.C.E. Number LS 5290



COUNTY SURVEYOR'S STATEMENT

This Corner Record was received MAY 11, 2005 and examined

and filed JULY 13, 2005

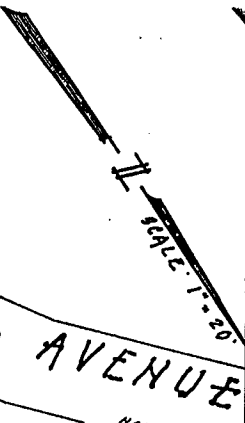
Signed _____ Title COUNTY SURVEYOR



County Surveyor's Comment _____

Sketch Map "A"
(not to scale)

SEE SHEET TWO FOR
NOTES AND LEGEND.



Found Standard Street
Monument (See Detail
"B" per 23 PM 63)

New Points
Set Here

Sketch Map "B"
(not to scale)

96

166.06 CALC.
166.0 AK. E, PULL 4)

97

185.55 CALC.
185.6 AK. E, PULL 4)

98

218.00

99

213.78 CALC.
213.6 AK. E, PULL 4)

100

101

102

103

104

105

CENTER BOULEVARD

SEE SHEET THREE

FENCE IS ON CALCULATED
RIGHT-OF-WAY LINE

SAN ANSELMO FOREST AVENUE

Parcel One
4006 ACRES 10,001 SQUARE FEET
NET AREA 8,161 SQUARE FEET

Parcel Two
4006 ACRES 10,518 SQUARE FEET

Indicates Set 5/8" Bar
Cap LS 5290

Found Nail & Tag
RE 3230

CENTER BOULEVARD
(FORMERLY RAILROAD AVENUE)
(FORMERLY NORTH SHORE RAILROAD)

40' R/W

40' R/W

BASE OF BEARINGS
AND TRAIN PROGRAM NS-135M

FOUND NAIL & TAG
RE 15652
AN OLD
N-2063
SOUTHERN
PULL 4