

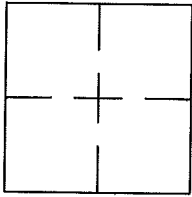
CORNER RECORD

Document Number A.P.# 007-024-29

City of SAN ANSELMO

County of MARIN, California

Brief Legal Description LOT TWO 27 OS 19



CORNER TYPE

COORDINATES (Optional)

Government Corner Control

Meander Property

Rancho Other

Date of Survey 5/9/96

N. _____
 E. _____
 Zone _____ NAD27 NAD83
 NAD83 Epoch _____
 Elev. _____
 Vert. Datum: NGVD29 NAVD88
 Meas. Units: Metric Imperial

Corner- Left as found Found and tagged Established Reestablished Rebuilt

Identification and type of corner found: Evidence used to identify or procedure used to establish or reestablish the corner:
REESTABLISHED TWO CORNERS AS SHOWN ON 27 OS 19 (SEE SHEET 2)

A description of the physical condition of the monument as found and as set or reset: SEE SHEET 2.

SURVEYOR'S STATEMENT

This Corner Record was prepared by me or under my direction in conformance with

the Land Surveyor's Act on SEPTEMBER 23 2015

Signed Lawrence P. Doyle P.L.S. or R.C.E. No. P.L.S. 4694



COUNTY SURVEYOR'S STATEMENT

This Corner Record was received SEPTEMBER 25, 2015

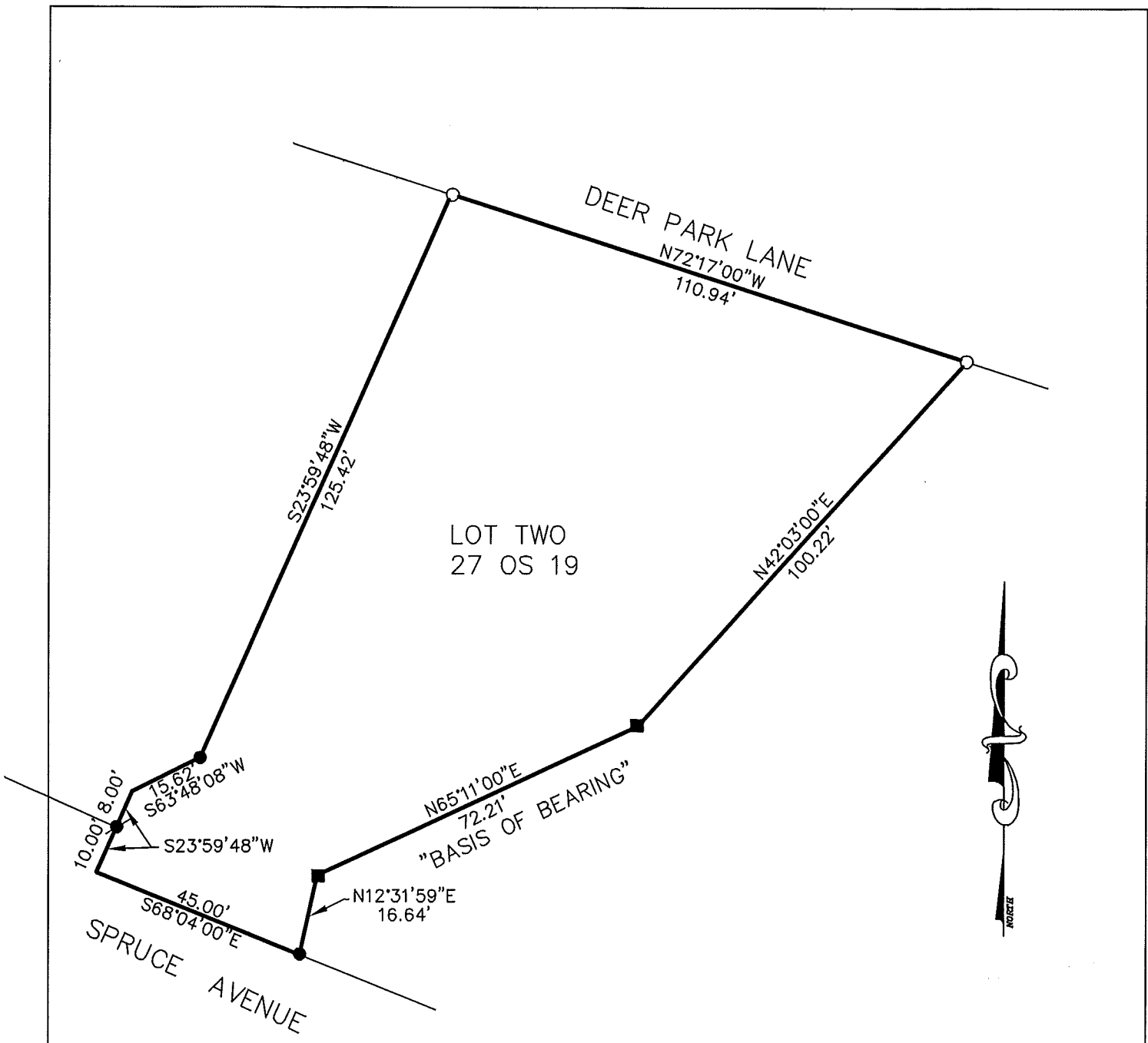
and examined and filed DECEMBER 21, 2015

Signed [Signature] P.L.S. or R.C.E. No. 7821

Title County Surveyor

County Surveyor's Comment _____





BASIS OF BEARING
THE BEARING OF N65°11'00"E
BETWEEN TWO HUBS & TAGS
LS 5290 PER 27 OS 19



LEGEND

- FD. NAIL & TAG LS 5290
- FD. PIPE & TAG LS 5290
- FD. HUB & TAG LS 5290
- SET 1/2" REBAR & CAP
LS 4694 IN 1996



CORNER RECORD		
LOT TWO 27 OS 19		
LARKSPUR MARIN COUNTY CALIFORNIA		
SCALE: 1"=30'	LAWRENCE P. DOYLE	DRAWN BY:
DATE: 9/15		SHEET 2 OF 2
LAND SURVEYOR/CIVIL ENGINEER		
100 HELENS LANE MILL VALLEY CA 94941 (415-388-9585)		
		DRAWING NO. 261