

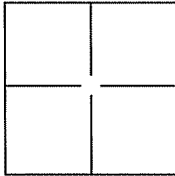
CORNER RECORD

Document Number A.P.N. 007-014-39

City of San Anselmo

County of Marin, California

Brief Legal Description Lands of Johnston, 88 Florence Ave., D.N. 2011-0064324.



CORNER TYPE

Government Corner Control
 Meander Property
 Rancho Other

Date of Survey 29 June 2012

COORDINATES(Optional)

N. _____
 E. _____
 Zone _____ NAD27 NAD83
 NAD83 Epoch _____
 Elev. _____
 Vert. Datum: NGVD29 NADV88
 Meas. Units: Metric Imperial

Corner - Left as found Found and tagged Established Reestablished Rebuilt

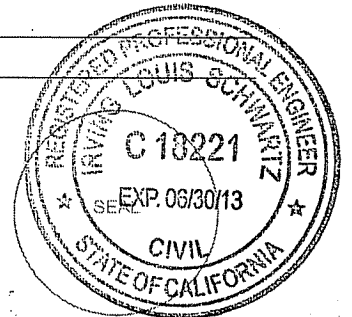
Identification and type of corner found: Evidence used to identify or procedure used to establish or reestablish the corner:
Found 2" Iron Pipe and Nail in A.C., No Tag (2) as shown on 2012 OS 17 and 15 PM 27 and
Found 3/4" Iron Pipe and Yellow Cap, "R.C.E. 18221" per 2012 OS 17.

A description of the physical condition of the monument as found and as set or reset: _____
Set Most Northerly, Most Westerly and Most Easterly corners (3 corners), See Exhibit "A".

SURVEYOR'S STATEMENT

This Corner Record was prepared by me or under my direction in conformance with the Land Surveyor's Act on JULY 10, 2012.

Signed [Signature] P.L.S. or R.C.E. No.: 18221



COUNTY SURVEYOR'S STATEMENT

This Corner Record was received JULY 12, 2012 and examined and filed JULY 23, 2012.

Signed [Signature] P.L.S. or R.C.E. No.: 7128

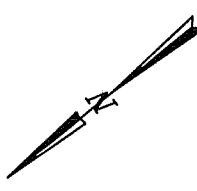
Title COUNTY SURVEYOR

County Surveyor's Comment _____

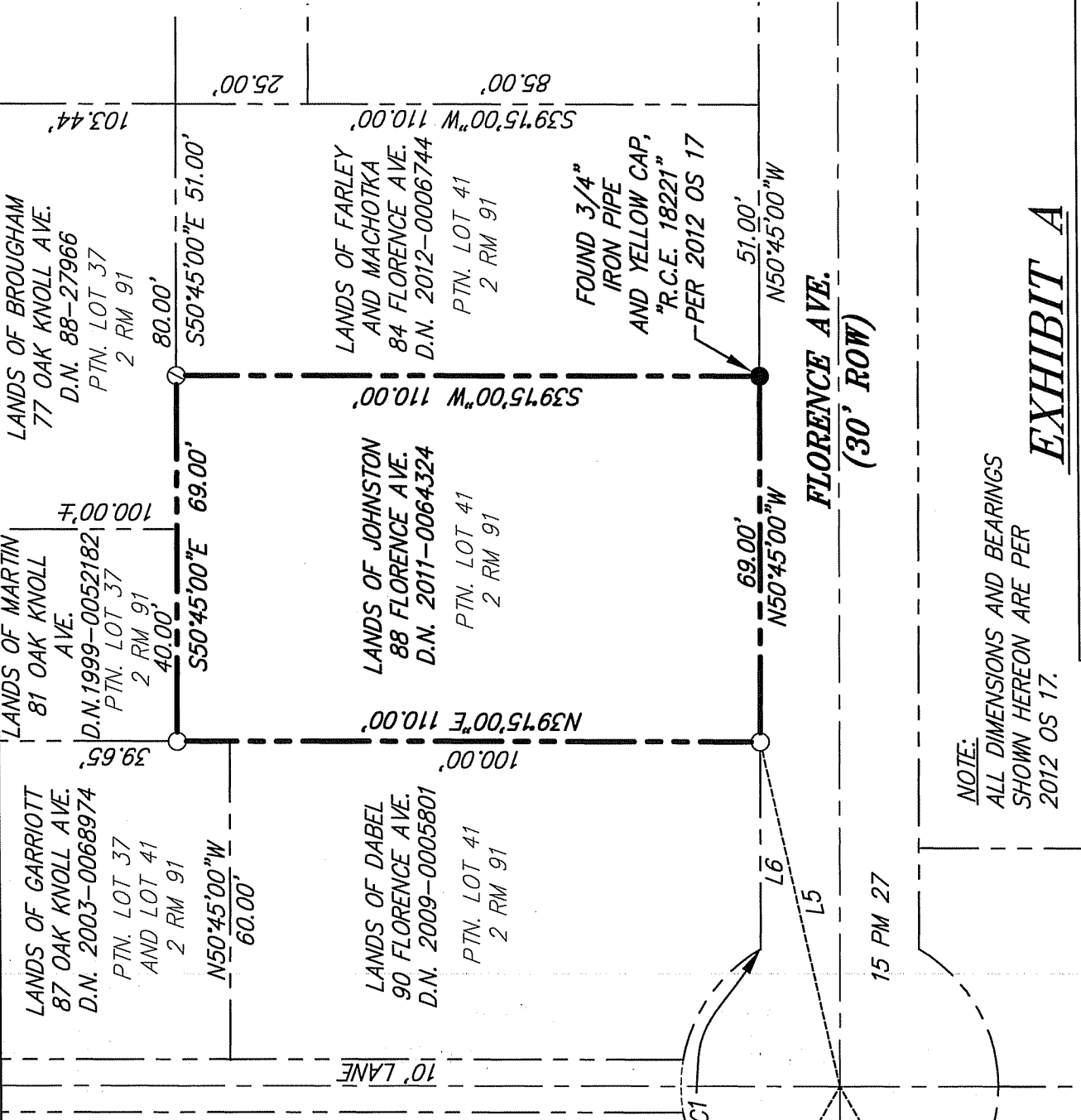


LINE TABLE		
LINE	BEARING	LENGTH
L1	S50°45'00"E	30.00'
L2	N20°43'07"W	30.00'
L3	N65°16'25"W	59.87'
L4	N80°43'07"W	30.00'
L5	S63°44'54"E	66.69'
L6	N50°45'00"W	39.00'

CURVE TABLE			
LINE	LENGTH	RADIUS	DELTA
C1	78.54'	30.00	150°00'00"



SCALE: 1" = 30'



NOTE:
ALL DIMENSIONS AND BEARINGS
SHOWN HEREON ARE PER
2012 OS 17.

EXHIBIT A

ILS ASSOCIATES, INC.®
CIVIL ENGINEERING AND LAND SURVEYING
79 GULLY DRIVE SUITE A NOVATO, CA 94948-0777 (415)865-5000 FAX (415)865-5785

DATE: 07/03/2012
FILE: 8678CR.dwg
PAGE 2 OF 2

LEGEND
○ SET 3/4" IRON PIPE & YELLOW CAP "R.C.E. 18221"
⊙ SET NAIL AND BRASS TAG AT TOP OF FENCE "R.C.E. 18221"
A.P.N. 007-014-39