

# CORNER RECORD

Document Number

006-155-07

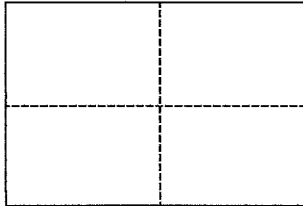
City of San AnselmoCounty of Marin

California

Brief Legal Description Lot 14, 6 RM 8

## CORNER TYPE

## COORDINATES (Optional)



Government Corner

Control

North

Meander

Property

☒

East

Rancho

Other

Zone

Datum

Date of Survey

4-29-15

Elev.

Corner

Left as found ☐Found and tagged ☐Established ☐Reestablished ☒Rebuilt ☐

Identification and type of corner found: Evidence used to identify or procedure used to establish or reestablish the corner:

Held Monuments along the Centerline of Hildale Drive and Record Map Information as shown on 6 RM 8

A description of the physical condition of the monument as found and as set or reset:

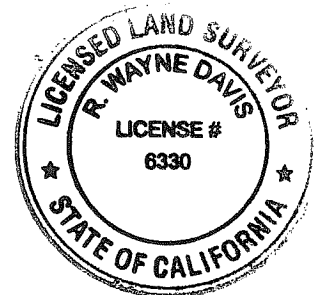
Set Cut X at Property Line Extended along Front. Set Lath and Ginnies along the rear line for clearing purposes (see plat Attached).

## SURVEYOR'S STATEMENT

This Corner Record was prepared by me or under my direction in conformance with the Land Surveyors' Act on 06-06-15

Signed

L.S. Number

LS 6330

## COUNTY SURVEYOR'S STATEMENT

This Corner Record was received

JULY 20, 2015

and examined and filed

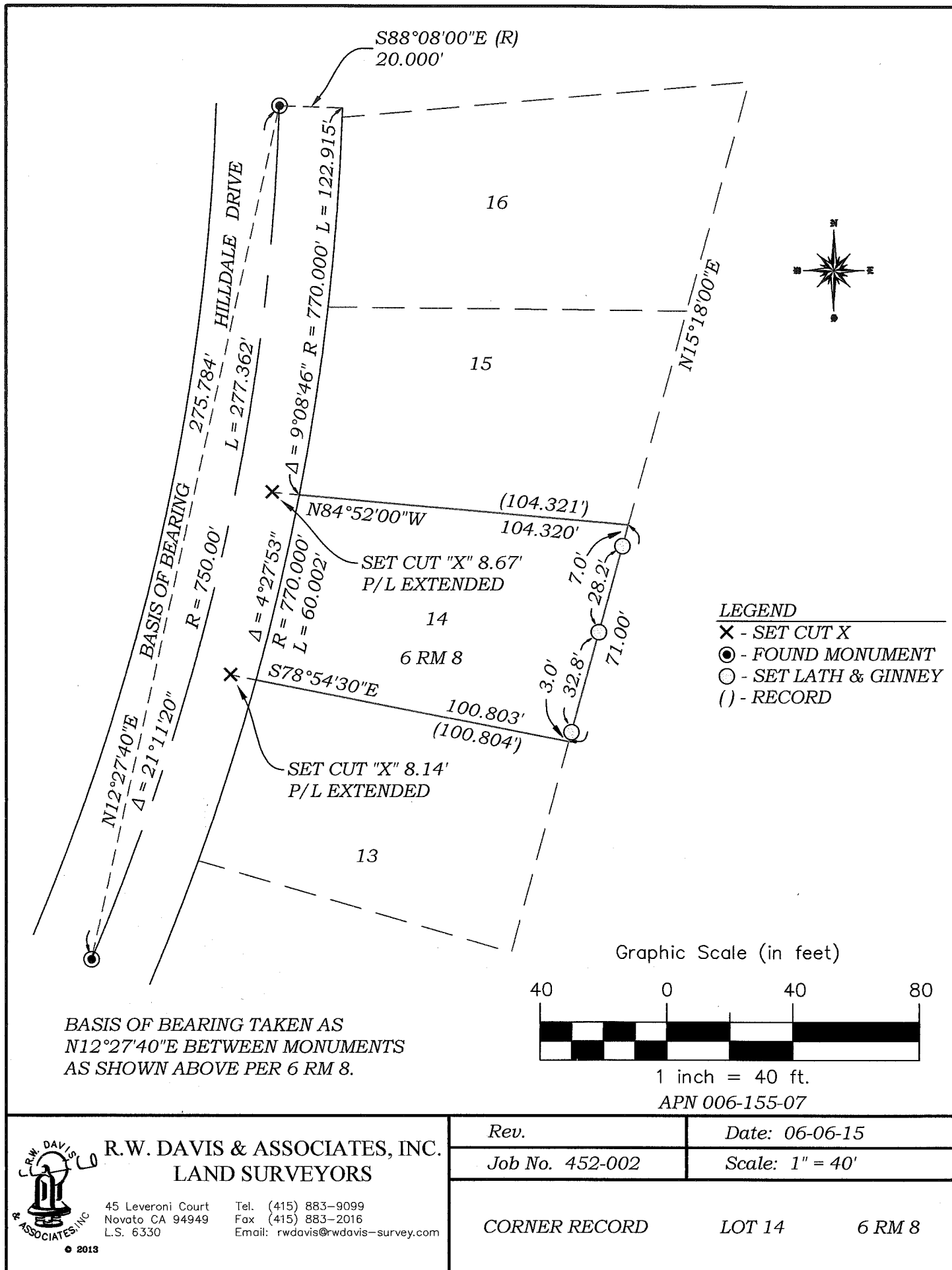
OCTOBER 15, 2015

Signed

Title

County Surveyor

County Surveyor's Comment



**R.W. DAVIS & ASSOCIATES, INC.**  
**LAND SURVEYORS**

45 Leveroni Court  
 Novato CA 94949  
 L.S. 6330

Tel. (415) 883-9099  
 Fax (415) 883-2016  
 Email: rwdavis@rwdavis-survey.com

© 2013

Rev.

Date: 06-06-15

Job No. 452-002

Scale: 1" = 40'

CORNER RECORD

LOT 14

6 RM 8