

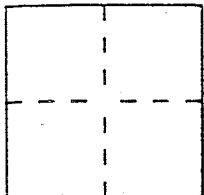
CORNER RECORD

Document Number A. P. # 6-144-49

City of SAN ANSELMO

County of NIARIN, California

Brief Legal Description LOT 2 & PORTION OF LOT 3, "MAP OF SOUTH-VIEW TERRACE", VOLUME 12 MAPS, PAGE 39



CORNER TYPE

Government Corner ☐ Control ☐
 Meander ☐ Property ☒
 Rancho ☐ Other ☐
 Date of Survey _____

COORDINATES (Optional)

N. _____
 E. _____
 Zone _____ Datum _____
 Elev. _____

Corner S Left as found ☐ Found and tagged ☐ Established ☐ Reestablished ☒ Rebuilt ☐

Identification and type of corner found: Evidence used to identify or procedure used to establish or reestablish the corner:

CORNERS REESTABLISHED FROM FOUND
STREET MONUMENTS IN SOUTHVIEW
TERRACE AS SHOWN ON 12 MAPS 39.
A. P. 6-144-49

A description of the physical condition of the monument as found and as set or reset: _____

SEE SKETCH ON PAGE 2 OF 2

SURVEYOR'S STATEMENT

This Corner Record was prepared by me or under my direction in conformance with the Land Surveyors' Act on OCTOBER 13 1993

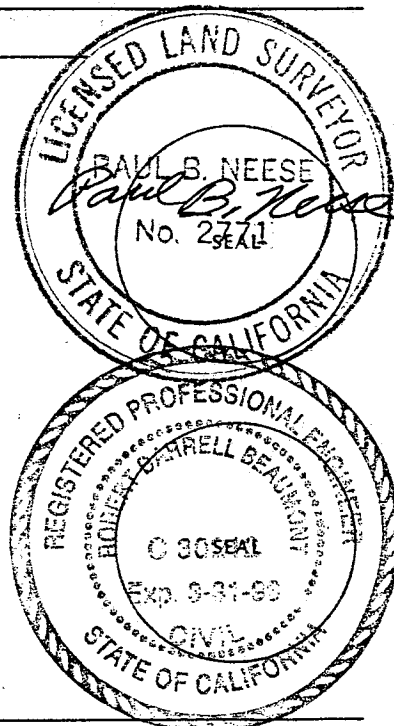
Signed Paul B. Neese L.S. or R.C.E. Number L.S. 2771

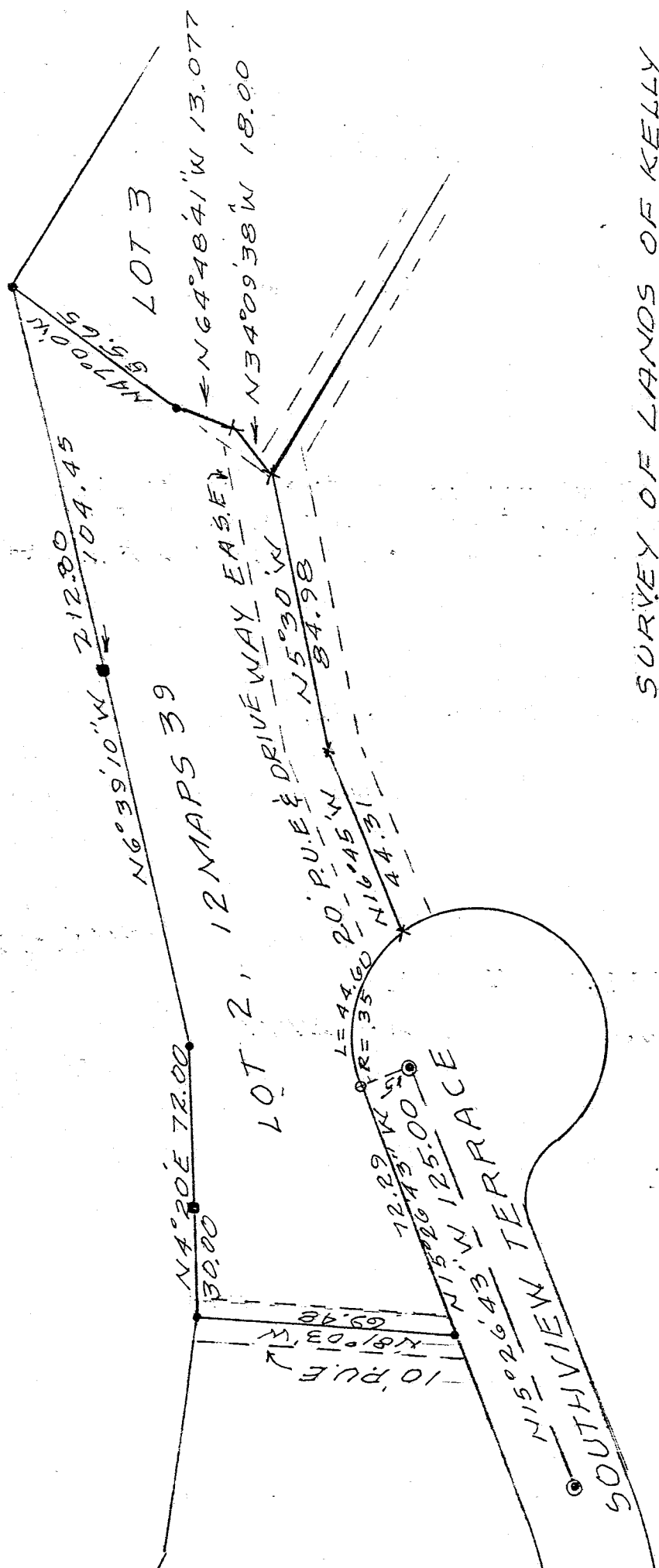
COUNTY SURVEYOR'S STATEMENT

This Corner Record was received 10-15 1993 and examined and filed 10-15 1993.

Signed P. B. T. Title CL

County Surveyor's Comment _____





SURVEY OF LANDS OF KELLY

D.N. 88-13087

OCT 1993

SCALE 1"=40'

- MON. 12 MAPS 39, R.C.E. 10057
- SET 1/2" RE BAR, L.S. 2771 CAP
- SET HUB, L.S. 2771 TAG
- + SET NAIL, L.S. 2771 TAG
- FOUND 3/4" I.P. R.C.E. 10057 TAG