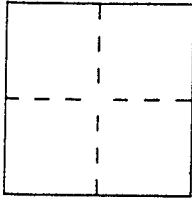


# CORNER RECORD

Document Number 006-14  
City of San Anselmo County of Marin, California  
Brief Legal Description Subdivision 6 RM 83



## CORNER TYPE

Government Corner ☐ Control ☐  
Meander ☐ Property ☒  
Rancho ☐ Other ☐  
Date of Survey \_\_\_\_\_

## COORDINATES (Optional)

N. \_\_\_\_\_  
E. \_\_\_\_\_  
Zone \_\_\_\_\_ Datum \_\_\_\_\_  
Elev. \_\_\_\_\_

Corner — Left as found ☒ Found and tagged ☐ Established ☐ Reestablished ☐ Rebuilt ☒

Identification and type of corner found: Evidence used to identify or procedure used to establish or reestablish the corner:

Found Iron Pipe Monuments in Centerline of Streets.  
County Road Crew Set Monument Ring Covers and Casings  
over points (see map over for details).

A description of the physical condition of the monument as found and as set or reset: \_\_\_\_\_

3/4" to 1" Iron Pipes with no nail and no tag (typical)

(over)

## SURVEYOR'S STATEMENT

This Corner Record was prepared by me or under my direction in conformance with  
the Land Surveyors' Act on 6/8/05

Signed David Harg L.S. or R.C.E. Number LS 5290



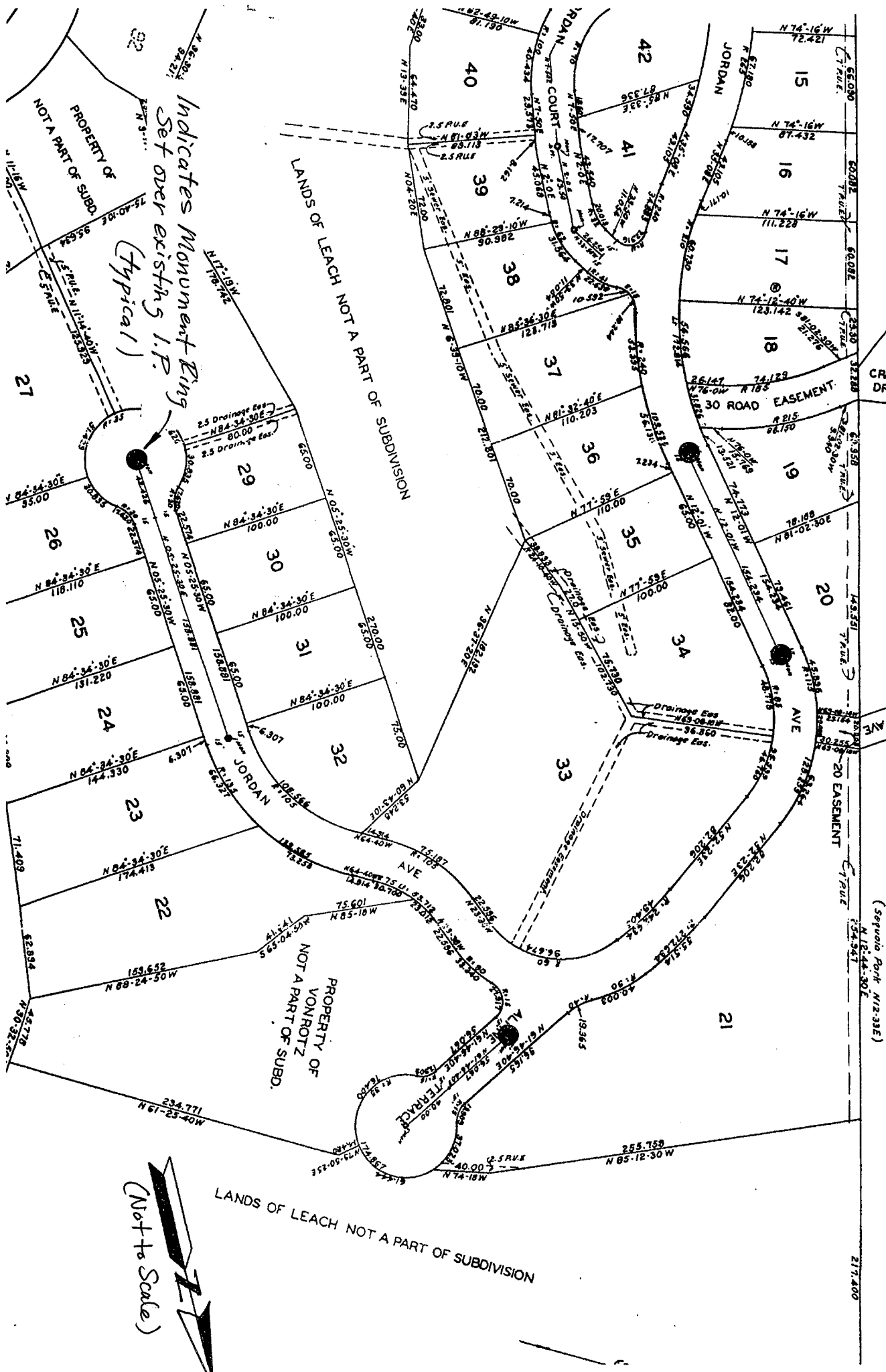
## COUNTY SURVEYOR'S STATEMENT

This Corner Record was received JUNE 23, 2005 and examined  
and filed JULY 27, 2005

Signed Craig Tackabery Title COUNTY SURVEYOR

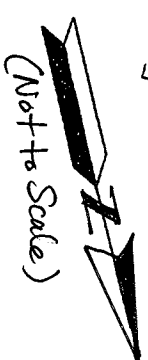


County Surveyor's Comment \_\_\_\_\_



Indicates Monument Ring  
Set over existing I.P.  
(typical)

11" 8 Rm 83"



LANDS OF LEACH NOT A PART OF SUBDIVISION

PROPERTY OF  
VONROTZ  
NOT A PART OF SUBD.

(See page 101, 102, 103)