



JERRICO ASSOCIATES

7661

CORNER RECORD

SUITE 27

77 MARK DRIVE

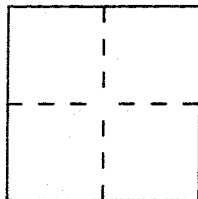
SAN RAFAEL, CA 94903

Document Number 6-118-21

City of San Anselmo

County of Marin

, California

Brief Legal Description Lots 8,9 Amended Map of Sequoia Park Sec. 2 4 RM 21
Block 28

CORNER TYPE

Government Corner ☐ Control ☐
 Meander ☐ Property ☒
 Rancho ☐ Other ☐
 Date of Survey June 10, 1997

COORDINATES
(Optional)

N. _____
 E. _____
 Zone _____ Datum _____
 Elev. _____

Corner — Left as found ☒ Found and tagged ☐ Established ☐ Reestablished ☐ Rebuilt ☐

Identification and type of corner found: Evidence used to identify or procedure used to establish or reestablish the corner:
 Found points established in corner-record dated
 August 17, 1995 (This is a retracement survey).

A description of the physical condition of the monument as found and as set or reset: _____

See page 2.

SURVEYOR'S STATEMENT

This Corner Record was prepared by me or under my direction in conformance with
 the Land Surveyors' Act on June 10 19 97.

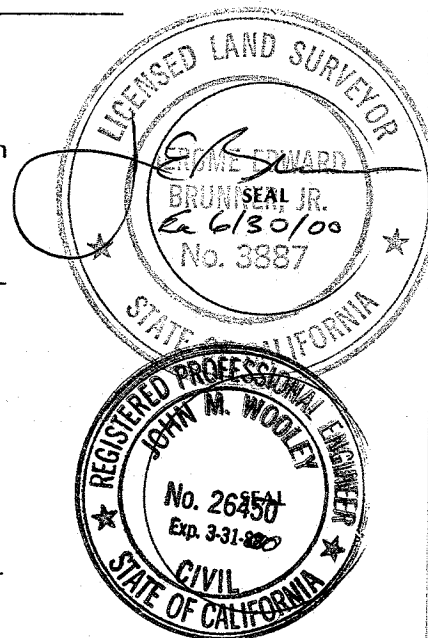
Signed [Signature] L.S. or R.C.E. Number Ls 3887

COUNTY SURVEYOR'S STATEMENT

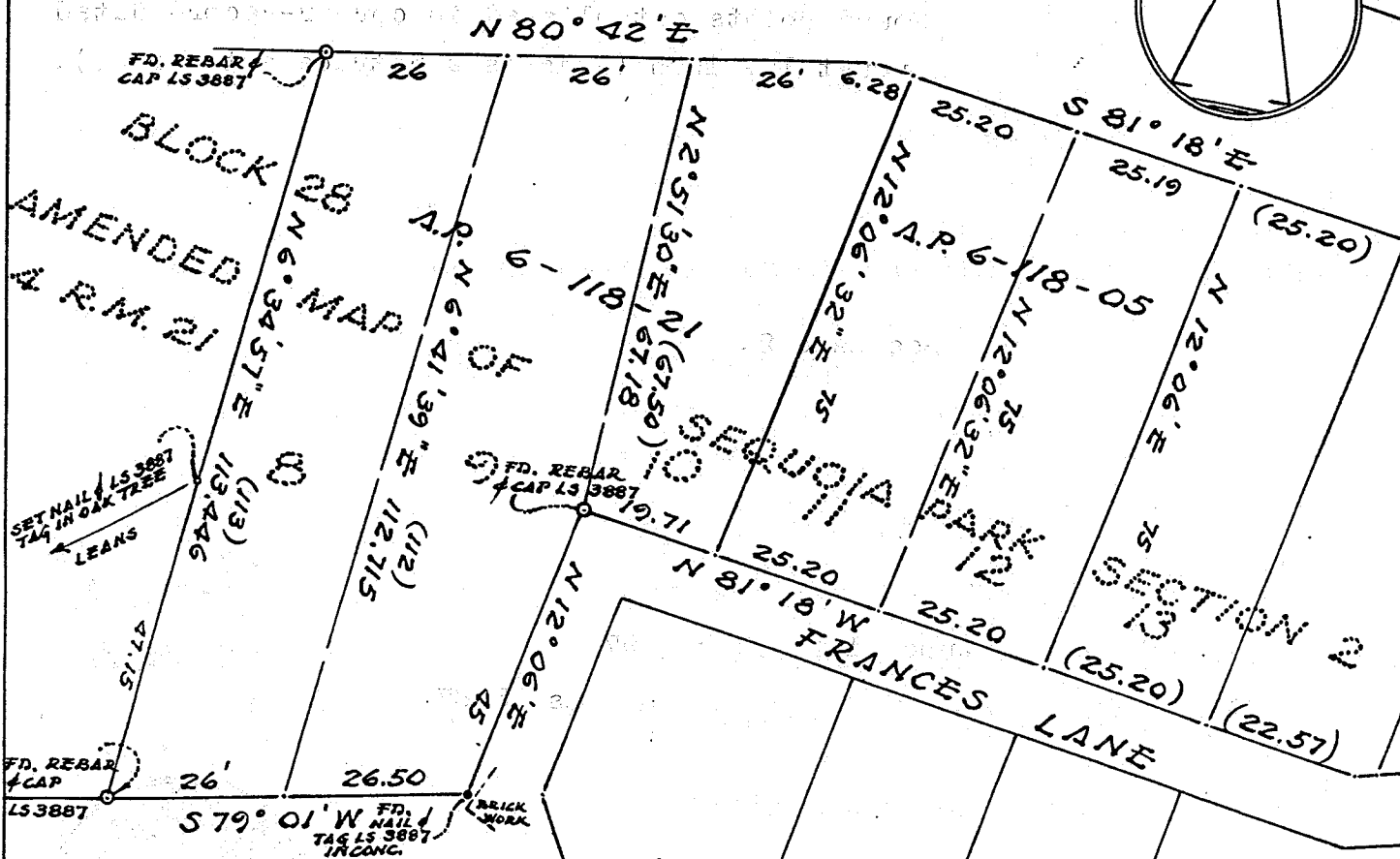
This Corner Record was received JUNE 13 19 97 and examined
 and filed JUNE 18 19 97.

Signed [Signature] Title Deputy

County Surveyor's Comment _____



SURVEY A.P. 6-118-05, 21
LANDS OF CONLEY 96-48326
SEQUOIA DRIVE



JUNE 1997
JERRICO ASSOCIATES 77 MARK DRIVE SAN RAFAEL CALIFORNIA.