

L. A. Stevens & Associates, Inc.
Professional Land Surveyors
Novato, California

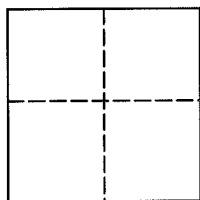
Lands of Moore
Job #: 13-1501

CORNER RECORD

Document Number 006-115-14

Town of San Anselmo, County of Marin, California

Brief Legal Description: Being Parcel 2 of that certain Parcel map, filed in Book 3 of Parcel Maps at Page 70, Marin County Records.



CORNER TYPE

COORDINATES (Optional)

Government Corner ☐

Control ☐

N _____

Meander ☐

Property ☒

Zone _____ NAD27 ☐ NAD83 ☐

NAD 83 Epoch _____

Rancho ☐

Other ☐

Elev. _____

Vert. Datum: NGVD29 ☐ NAVD88 ☐

Date of Survey September 17, 2013

Meas. Units: Metric ☐ Imperial ☒

Corner - Left as found ☒ Found and tagged ☒ Established ☐ Reestablished ☐ Rebuilt ☐

Identification and type of corner found: Evidence used to identify or procedure used to establish or reestablish the corner:
See Page 2 of 2.

A description of the physical condition of the monument as found and as set or reset:
See Page 2 of 2

SURVEYOR'S STATEMENT

This Corner Record was prepared by me or under my direction in conformance with

The Land Surveyor's Act on September 30, 2013.

Signed [Signature] P.L.S. 6649

COUNTY SURVEYOR'S STATEMENT

This Corner Record was received DECEMBER 12, 2013

and examined and filed FEBRUARY 9, 2014

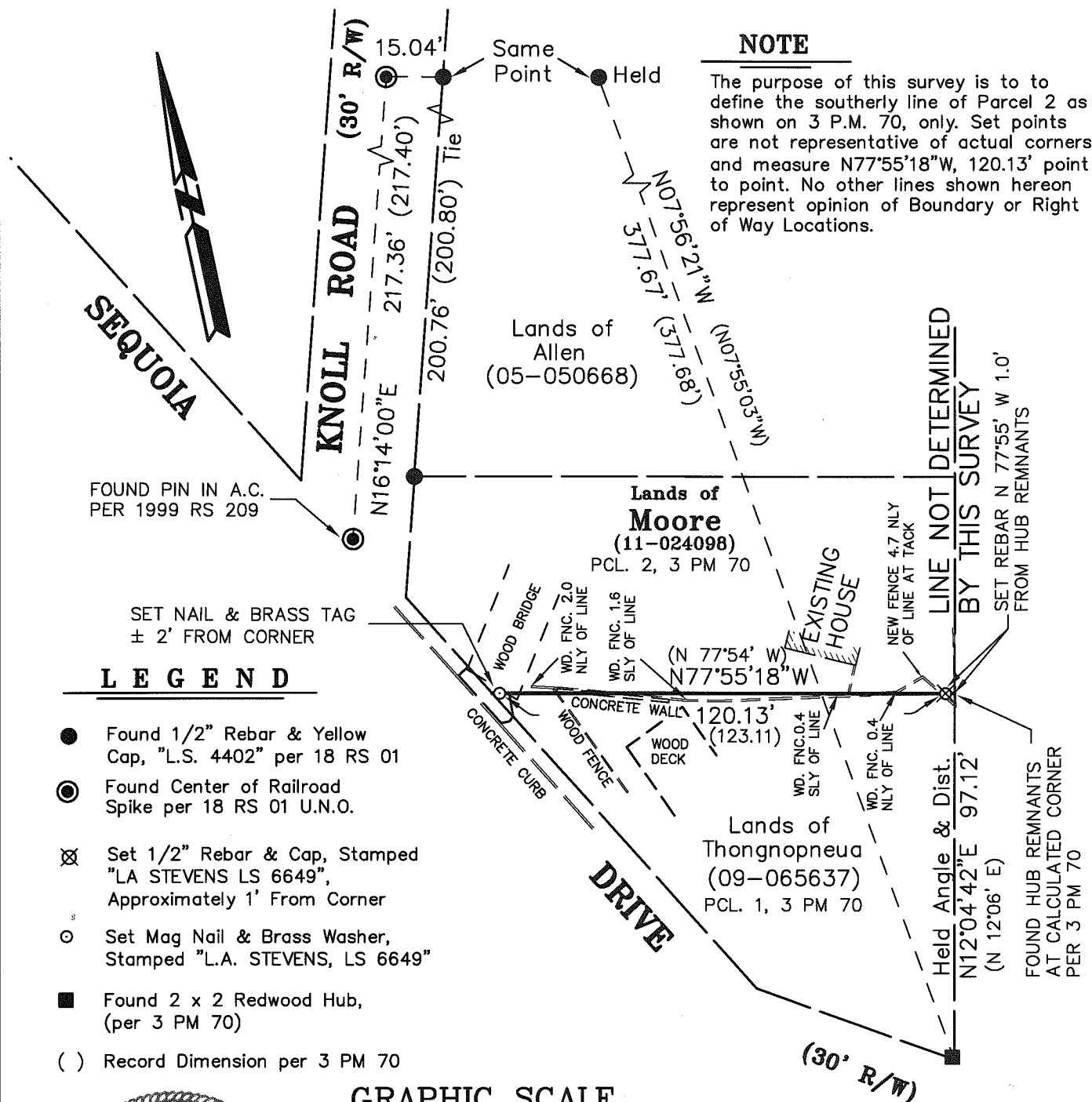
Signed [Signature] P.L.S. or R.C.E. No. 7821

Title DEPUTY

County Surveyors' Comment _____



All distances shown are in feet and decimals thereof



Lawrence A. Stevens, PLS 6649

Copyright © Lawrence A. Stevens 2013

Corner Record Lands of Moore

(Parcel 2, 03 PM 70)

San Anselmo Marin County California
Scale: 1" = 40' September, 2013

L.A. Stevens & Associates, Inc.

Professional Land Surveyors * (415) 382-7713
7 Commercial Blvd., Suite 1 * Novato, CA 94949

Job # 13-1501

Page 2 Of 2